



2014
CELEBRATING
40 YEARS



INTRODUCING THE NEW KERSHAW LOGO

Why? Time travel with us for a minute...

1974. A new technology called a “pocket calculator” is just starting to show up in stores. Richard Nixon becomes the first US president to resign. Bell-bottom pants and bead chokers—oh, yeah, you’re wearing that. The NBA’s MVP is Kareem Abdul-Jabbar and Pittsburgh wins Superbowl IX. TV’s Ingalls family is out on the prairie, living in their little house. Gasoline costs 53 cents a gallon, but then the median US household income is just under \$12,000 a year. Daredevil Evel Knievel does not successfully jump the Snake River Canyon. Lynyrd Skynyrd’s “Freebird” is a brand new hit song. And Kershaw Knives is established to build knives their owners will be proud to own, carry, and use.

2014. Forty years—and millions of knives—later, Kershaw’s commitment to quality, technology, and innovation remains as strong as it was on Day One. However, there was one thing that wasn’t quite as fresh as it should be: our original logo. After 40 years, our bell-bottoms-and-bead-chokers-era logo was seriously in need of change. So to celebrate our 40-year milestone, we’ve updated our look to ensure that the Kershaw logo will continue to reflect our commitment to innovative knife designs, cutting-edge materials, and state-of-the-art manufacturing technology.

KERSHAW 4.0 Our updated logo trades in the original rounded, 70s-style typeface for a tighter, cleaner version. The edges of the letters have been chiseled and condensed so that everything fits together as precisely as a Kershaw knife. Our iconic Kershaw “k” and logo colors stay the same, as does our ongoing commitment to making knives you’ll be proud to own, carry, and use—for the next 40 years.

THE BACKGROUND AND THE BLADES:

4 HISTORY OF KERSHAW

6 TEAM KERSHAW:
SPONSORSHIPS
AND PARTNERSHIPS

10 NEW KNIFE DESIGNS

16 BLACKWASH

22 EMERSON

28 SPEEDSAFE®

52 MANUAL

58 MULTI-FUNCTION

62 HUNTING

68 OUTDOOR

74 FISHING

80 ACCESSORIES

84 BLADE STEELS

85 GLOSSARY

87 WARRANTY

88 BLADE INDEX



The Funxion EMT (8100GRYST) is a SpeedSafe® knife that features a 8Cr13MoV modified tanto blade with black-oxide coating, and partial serration. Built into the aluminum handle with rubber insert you will find a carbide glassbreaker, cord cutter, hex wrench and carabiner clip.

Special thanks to Jonathan House for his amazing photography throughout this catalog, Gassers Garage, Mudshark Studios LLC, Coleman Ranch, Jason McCall, Darren Wynn, FishEng Products, Andrew Fuller, Damion Lazzara, and Pickle Creek Archery.

40 YEARS



The Folding Field Knife (model 1050) was one of the first Kershaws we produced. It remained a top-seller for many years until finally being retired.

For 40 years, Kershaw customers have known that when they're carrying a Kershaw, they're carrying the real thing.

The real thing means value and plenty of it—from award-winning technologies and advanced materials to the solid feel of the blade lockup. It means incredible bang for a hard-earned buck. It means innovative designs and reliable craftsmanship. It also means we back each of these quality tools with Kershaw's famous Limited Lifetime Warranty against any defects in materials and construction.

During the past 40 years, Kershaw knives have proven their worth to people in almost every walk of life. In this special 40th Anniversary edition of our catalog, we're featuring some

of the many people who have helped make the Kershaw brand one of the strongest and most well known in the knife industry: our customers.

In addition to celebrating the people who use our knives, for 2014, we're also celebrating some exciting new partnerships and some awesome new knives.

Duck Commander & Buck Commander

We're "happy-happy-happy" to announce our partnership with Duck Commander and Buck Commander. As their Official Knife Partner, Kershaw will be working with the Duckmen and Buckmen on some great EDCs and duck and buck hunting knives.

Emerson Knives

Kershaw and Emerson will join forces on a series of eight new knives for 2014. Each will feature the look and toughness for which Emerson is famous and the engineering precision and the exacting fit-and-finish for which Kershaw is well known. Each will also feature the famous Emerson "wave shaped opening feature." Find them on pages 22-27.

Hall of Fame Fisherman Roland Martin

We're proud to welcome legendary fisherman and host of the TV show *Fishing with Roland Martin*, to the Kershaw family. Roland is endorsing the entire Kershaw fishing line—including our new K-Texture™ knives. For more, see pages 76-77.

OF MAKING QUALITY TOOLS



Our Limited Edition 40th Anniversary Knife

Naturally, part of our 40th anniversary celebration just had to be the creation of a 40th Anniversary Knife. And because we want to make it very special, our 40th Anniversary Knife is still under development. We'll keep you up-to-date as the knife making progresses.

On to the next 40 years

Each and every one of you is part of our 40-year success story. We hope you'll join us as we move into our next 40 years.

We'll continue to provide you with every day carrying knives that can tame any cardboard box and liberate any purchase from its plastic packaging, sporting knives that make hunting, fishing, watersports, and camping even better, work knives that won't let you down, and tactical knives that ensure you're ready for anything.

And, as always, each Kershaw tool will continue to provide a lifetime of performance and pride of ownership.

KERSHAW HISTORY HIGHLIGHTS

1974—Kershaw Knives opens for business in Lake Oswego, Oregon with its Limited Lifetime Warranty.

1985—We move into our new facility in Wilsonville, Oregon.

1997—The Wilsonville facility is expanded to include manufacturing, marketing and warehousing. One of the first made-in-the-USA products is the Multi-Tool (model A100C) with its adjustable locking pliers.

1998—Kershaw introduces the first SpeedSafe® knife. The Random Task (model 1510) wins the Blade Show "American Made Knife of the Year" award.

1999—We celebrate our 25th anniversary—and many more industry awards follow.

2004—Kershaw Knives/KAI USA moves into its new headquarters and expanded manufacturing facility in Tualatin, Oregon.

2005—We sweep the Blade Show with an unprecedented four awards including "Most Innovative American Made Knife of the Year" award and "Knife Collaboration of the Year."

2007—Kershaw introduces the first Composite Blade Technology knife. The Tyrade (model 1850) wins the Blade Show's "Overall Knife of the Year" award.

2009—A premium Composite Blade knife, the Kershaw Speedform (model 3550), wins the Blade Show's "American Made Knife of the Year" award.

2012—Kai USA repeats its unprecedented feat of sweeping the Blade Show awards with four new winners including "Best Buy of the Year" and "Kitchen Knife of the Year."

2013—Exciting changes are in the making as Kershaw prepares for our 40th Anniversary celebration.

Team Kershaw®

These are some of the people we admire. We admire their dedication to their sport. We admire their dedication to sharing it with others. We admire how they put Kershaw knives to use as a part of their lives. They also help us demonstrate how important Kershaw knives are—in every day life as well as in naturally knife-heavy sports like hunting. They help us get our brand out before a variety of key knife-buying audiences and even help us introduce the Kershaw brand to new audiences. It's not an easy job. It's definitely worthy of admiration. And it's why we're so proud to sponsor these terrific teams, organizations, and individuals.



Roland Martin

PROUD SPONSOR OF:

Buck Commander
Pro Roughstock
Chris Cole
Oregon Rafting Team
Outdoors with Outdoors Dan
Steve's Outdoor Adventure
Scott Haugen
Outdoors International
Next Level MMA
Roland Martin
Majesty Outdoors
Team Nockout
Full Contact Fighting Federation



Buck Commander



Pro Roughstock



Chris Cole



Team
kershaw



HEY!

Exciting New Partnerships, Too

We're thrilled to welcome Duck Commander and Buck Commander to Team Kershaw. With our mutual dedication to the outdoors, we think it's a natural fit and we're more than excited to get going. As the Official Knife Partner of Duck Commander and Buck Commander, we're currently working with the Duckmen and Buckmen on a collection of must-have knives for every day carrying and for every duck or buck hunter. Oh, and some of us are working on our beards, too.

ONGOING

Kershaw joined forces with Belarusian knife maker Dmitry Sinkevich to create the 2014 Nura 3.0 and Nura 3.5. The Nura's handle design has an "aerospace" feel, inspired by Sinkevich's engineering background.



INNOVATION

What's New Now
At Kershaw,
it's about the knife.
It always has been.

What began as humankind's first tool—a sharpened stone—has become a high-tech marvel of advanced steel, performance coatings, and precision mechanics. Since

the Stone Age, knife makers have worked to continually improve the product, creating specialized knives for specific tasks, tweaking the materials, modifying the designs.



NURA 3.5 4035TIKVT



NURA 3.0 4030TIKVT

Tiny, but very cool. The new Kershaw Ember is designed to give you a lot of style in a little pocketknife. The 2-inch blade opens with SpeedSafe assisted opening.



EMBER 3560



SHUFFLE **8700PINK**



SHUFFLE **8700BLK**



SHUFFLE **8700SNOW**



AMPLITUDE **3870**



LEEK - TEAL **1660TEAL**



THISTLE **3812**



SECRET AGENT **4007**

In our 40 years, Kershaw pioneered the use of many of the technologies and advanced materials that are today standard in the knife industry. Our SpeedSafe® assisted opening knives were first-to-market. We introduced the concept of knives with interchangeable blades in our Blade Traders. Recently, our Composite Blade technology, which combines two steels into one blade, gives knife users the best of both worlds by enabling us to use steel known for edge retention on the edge and steel known for strength on the spine. And we will keep on innovating, bringing new and better technologies and materials to today's knife making industry and knife using public.



SIEGE **1073**



STARTER **1301BW**



LIFTER **1302BW**



MANIFOLD **1303BW**



CRYO G-10 **1555G10**



STROBE **1086**



CAMBER **1678**



KNOCKOUT **18700LBLK**



The wildly popular Cryo now has a G-10 front scale—which lets the Rick Hinderer design shine through even more.

Our new 2014 knives represent the latest advances. There are exciting new designs such as the streamlined Nura from Belorussian knife designer Dmitry Sinkevich. There are variations on the popular Cryo and Cryo II from Rick Hinderer. We're also proud to introduce our new BlackWash™ series. (And yes, we're expecting BlackWash to be huge.) For tech fans, check out our so-smooth-you-won't-miss-the-assist KVT manual opening system in selected new knives as well.

To discover what's new from Kershaw, look for this icon throughout this catalog.



12" CURVED **1241**



9" CURVED **1242GE**



Kershaw's new line of fishing knives features our exclusive K-Texture that provides a solid grip even in wet (or slippery) conditions.

The new fishing line features our K-Texture grip. Interlocking Kershaw "k"s provide extra texture for an extra secure grip—and a unique look.



FOLDING FILLET **1258**



7 1/2" FILLET **1247**



9 1/2" FILLET **1249**



7" BONING WITH SPOON **1243SH**

BLACKWASH

Self-reliance is self-evident.
Rebellion has a cause.
Being prepared is a way of life.
Being tested is to be expected.
Fear is to be embraced.
One opinion counts.
Independence goes without saying.
And there are no excuses.

To those who subscribe to the philosophy,
we just have one thing to say:

OWN IT™
BLACKWASH SERIES



NEW

CRYO BLACKWASH 1555BW



- The award-winning Cryo, now in BlackWash™
- SpeedSafe® assisted opening
- Opens with flipper or thumbstud
- Secure frame lock with lockbar stabilizer
- 4-position deep-carry pocketclip (right/left; tip-up/down)
- Designed by Rick Hinderer

STEEL	HANDLE	BLADE	CLOSED	WEIGHT
8Cr13MoV, black-oxide BlackWash™ finish	410 steel, black-oxide BlackWash™ finish	2.75 in.	3.75 in.	4.1 oz.

NEW

CRYO TANTO BLACKWASH 1555TBW



- Tanto blade style and BlackWash™ finish make the Cryo look more rugged than ever
- SpeedSafe® assisted opening
- Opens with flipper or thumbstud
- Secure frame lock with lockbar stabilizer
- 4-position deep-carry pocketclip (right/left; tip-up/down)
- Designed by Rick Hinderer

STEEL	HANDLE	BLADE	CLOSED	WEIGHT
8Cr13MoV, black-oxide BlackWash™ finish	410 steel, black-oxide BlackWash™ finish	2.75 in.	3.75 in.	4.1 oz.

NEW

THERMITE BLACKWASH 3880BW



- The popular Thermite, now in BlackWash™
- SpeedSafe® assisted opening
- Opens with flipper or thumbstud
- Secure frame lock with lockbar stabilizer
- 4-position deep-carry pocketclip (right/left; tip-up/down)
- Designed by Rick Hinderer

STEEL	HANDLE	BLADE	CLOSED	WEIGHT
8Cr13MoV, black-oxide BlackWash™ finish	G-10 front, 410 steel back, black-oxide BlackWash™ finish	3.5 in.	4.4 in.	4.5 oz.



CRYO II BLACKWASH 1556BW

NEW



- The award-winning Cryo—in a larger size and BlackWashed
- SpeedSafe® assisted opening
- Opens with flipper or thumbstud
- Secure frame lock with lockbar stabilizer
- 4-position deep-carry pocketclip (right/left; tip-up/down)
- Designed by Rick Hinderer

STEEL	HANDLE	BLADE	CLOSED	WEIGHT
8Cr13MoV, black-oxide BlackWash™ finish	410 steel, black-oxide BlackWash™ finish	3.4 in.	4.4 in.	5.5 oz.

CRYO II TANTO BLACKWASH 1556TBW

NEW



- Tanto blade style and BlackWash™ finish make this larger Cryo look more rugged than ever
- SpeedSafe® assisted opening
- Opens with flipper or thumbstud
- Secure frame lock with lockbar stabilizer
- 4-position deep-carry pocketclip (right/left; tip-up/down)
- Designed by Rick Hinderer

STEEL	HANDLE	BLADE	CLOSED	WEIGHT
8Cr13MoV, black-oxide BlackWash™ finish	410 steel, black-oxide BlackWash™ finish	3.4 in.	4.4 in.	5.5 oz.

SCRAMBLER BLACKWASH 3890BW

NEW



- BlackWash™ gives this classy knife a worn-leather jacket of cool
- SpeedSafe® assisted opening
- Opens with flipper
- Secure frame lock
- Reversible pocketclip (left/right)
- Designed by RJ Martin

STEEL	HANDLE	BLADE	CLOSED	WEIGHT
8Cr13MoV, black-oxide BlackWash™ finish	Textured G-10/steel bolster front, 410 steel back, black-oxide BlackWash™ finish	3.5 in.	4.4 in.	5.2 oz.



NEW

LEEK BLACKWASH 1660BLKW



- The popular Leek—now in BlackWash™
- SpeedSafe® assisted opening
- Opens with flipper
- Sturdy frame lock
- Tip-Lock slider keeps blade securely closed when folded
- Reversible pocketclip (tip-up/down)
- Made in the USA

STEEL	HANDLE	BLADE	CLOSED	WEIGHT
Sandvik 14C28N, DLC BlackWash™ finish	410 steel, DLC BlackWash™ finish	3 in.	4 in.	3.1 oz.

NEW

BLUR BLACKWASH 1670BW

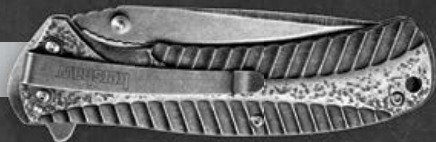


- The popular Blur is a natural for BlackWash™
- SpeedSafe® assisted opening
- Opens with thumbstud
- Secure inset liner lock
- Trac-Tec handle inserts for secure grip
- Reversible pocketclip (tip-up/down)
- Made in the USA

STEEL	HANDLE	BLADE	CLOSED	WEIGHT
Sandvik 14C28N, DLC BlackWash™ finish	6061-T6 anodized aluminum with Trac-Tec insert	3.4 in.	4.5 in.	3.9 oz.

NEW

STARTER 1301BW



- Amazing looks, value price
- SpeedSafe® assisted opening
- Opens with flipper or thumbstud
- Textured handle for secure grip
- Sturdy frame lock
- Single position, deep-carry pocketclip

STEEL	HANDLE	BLADE	CLOSED
3Cr13, black-oxide BlackWash™ finish	Stainless steel, black-oxide BlackWash™ finish	3.4 in.	4.6 in.



1302BW LIFTER NEW



- BadA tactical looks at a value price
- SpeedSafe® assisted opening
- Opens with flipper or thumbstud
- Textured handle for secure grip
- Sturdy frame lock
- Single-position, deep-carry pocketclip

STEEL	HANDLE	BLADE	CLOSED
3Cr13, black-oxide BlackWash™ finish	Stainless steel, black-oxide BlackWash™ finish	4 in.	5.25 in.

1303BW MANIFOLD NEW



- An impressive EDC at a value price
- SpeedSafe® assisted opening
- Opens with flipper or thumbstud
- Textured handle for secure grip
- Sturdy frame lock
- Single-position, deep-carry pocketclip

STEEL	HANDLE	BLADE	CLOSED
3Cr13, black-oxide BlackWash™ finish	Stainless steel, black-oxide BlackWash™ finish	3.5 in.	4.5 in.



“I love showing my knife off, and all of my co-workers always ask me to use it when their knife won’t cut through what they need it to.”

—Cory A., Pigeon, MI

DESIGNED BY

EMERSON™



BUILT BY

KNIVES
kershaw®

Kershaw's precision engineering meets Emerson's uncompromising functional design in this new 2014 collaboration.

Emerson's hard-use knives have earned many hard-core fans. Combined with Kershaw's own innovative technology, award-winning design, and top-quality production capabilities, we're proud to say that these high-performance knives will now be available to a much larger audience.

Each Kershaw-Emerson knife includes the Emerson "wave shaped feature," also called the remote pocket opener, which enables the user to open the knife as it is withdrawn from the pocket.

Famous In The Worst Places





NEW

CQC-1K 6094BLK



- Designed by Emerson, built by Kershaw
- Manual opening
- Opens with thumb disk or “wave shaped feature”
- “Wave shaped feature” opens knife as it is withdrawn from pocket
- Sturdy frame lock
- Reversible pocketclip (left/right)

STEEL	HANDLE	BLADE	CLOSED
8Cr14MoV, black-oxide coating	Black textured G-10 front, 410 steel back, black-oxide coating	3 in.	3.94 in.

NEW

CQC-2K 6024BLK



- Designed by Emerson, built by Kershaw
- Manual opening
- Opens with thumb disk or “wave shaped feature”
- “Wave shaped feature” opens knife as it is withdrawn from pocket
- Sturdy frame lock
- Reversible pocketclip (left/right)

STEEL	HANDLE	BLADE	CLOSED
8Cr14MoV, black-oxide coating	Black textured G-10 front, 410 steel back, black-oxide coating	2.75 in.	3.6 in.

NEW

CQC-3K 6014TBLK



- Designed by Emerson, built by Kershaw
- Manual opening
- Opens with thumb disk or “wave shaped feature”
- “Wave shaped feature” opens knife as it is withdrawn from pocket
- Sturdy frame lock
- Reversible pocketclip (left/right)

STEEL	HANDLE	BLADE	CLOSED
8Cr14MoV, black-oxide coating	Black textured G-10 front, 410 steel back, black-oxide coating	2.75 in.	3.75 in.



NEW

6054BRNBLK CQC-4K



- Designed by Emerson, built by Kershaw
- Manual opening
- Opens with thumb disk or “wave shaped feature”
- “Wave shaped feature” opens knife as it is withdrawn from pocket
- Sturdy frame lock
- Reversible pocketclip (left/right)

STEEL	HANDLE	BLADE	CLOSED
8Cr14MoV, black-oxide coating	Coyote brown textured G-10 front, 410 steel back, black-oxide coating	3.25 in.	4.2 in.

NEW

6074OLBLK CQC-5K

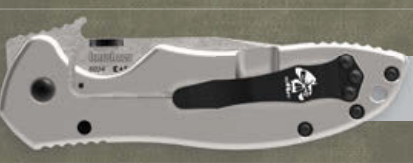


- Designed by Emerson, built by Kershaw
- Manual opening
- Opens with thumb disk or “wave shaped feature”
- “Wave shaped feature” opens knife as it is withdrawn from pocket
- Sturdy liner lock
- Reversible pocketclip (left/right)

STEEL	HANDLE	BLADE	CLOSED
8Cr14MoV, black-oxide coating	Olive green textured G-10	3 in.	4 in.

NEW

6034 CQC-6K

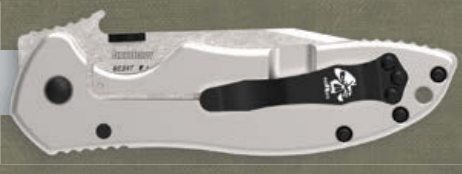


- Designed by Emerson, built by Kershaw
- Manual opening
- Opens with thumb disk or “wave shaped feature”
- “Wave shaped feature” opens knife as it is withdrawn from pocket
- Sturdy frame lock
- Reversible pocketclip (left/right)

STEEL	HANDLE	BLADE	CLOSED
8Cr14MoV, stonewashed and satin finish	Black textured G-10 front, 410 steel back, bead-blasted finish	3.25 in.	4.5 in.



NEW CQC-7K 6034T



- Designed by Emerson, built by Kershaw
- Manual opening
- Opens with thumb disk or “wave shaped feature”
- “Wave shaped feature” opens knife as it is withdrawn from pocket
- Sturdy frame lock
- Reversible pocketclip

STEEL	HANDLE	BLADE	CLOSED
8Cr14MoV, stonewashed and satin finish	Black textured G-10 front, 410 steel back, bead-blasted finish	3.25 in.	4.5 in.

NEW CQC-8K 6044TBLK



- Designed by Emerson, built by Kershaw
- Manual opening
- Opens with thumb disk or “wave shaped feature”
- “Wave shaped feature” opens knife as it is withdrawn from pocket
- Sturdy liner lock
- Reversible pocketclip

STEEL	HANDLE	BLADE	CLOSED
8Cr14MoV, black-oxide coating	Black textured G-10	3.5 in.	4.6 in.

Each Kershaw-Emerson knife features the Emerson “wave shaped opening feature,” also called the remote pocket opener. It enables the user to open the knife as it is withdrawn from the pocket.

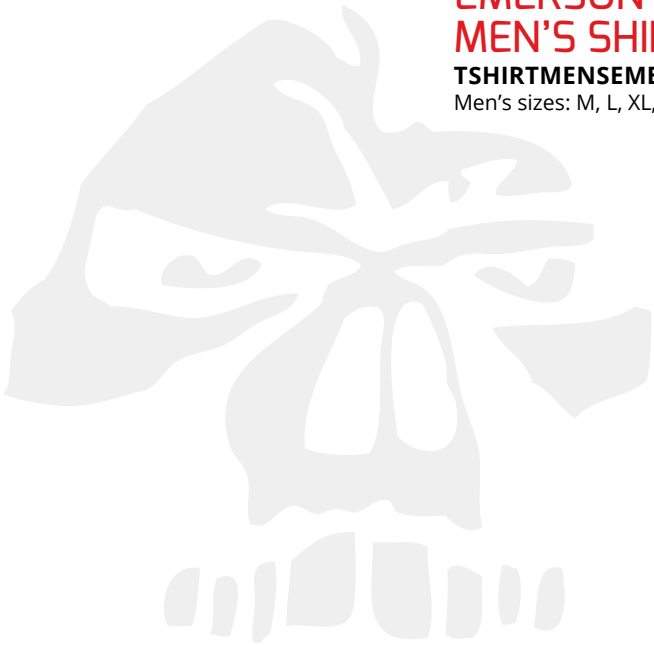
- 1) Make sure closed knife is snugged up against the rear seam of your pants pocket.
- 2) Pulling toward the rear seam, withdraw the knife from your pocket quickly and steadily so that the “wave shaped opening feature” hooks on the rear seam of the pocket.
- 3) This will automatically open the blade. By the time it’s out of the pocket, it’s ready for use. Pull back quickly and smoothly to ensure blade lock up.



EMERSON-KERSHAW ACCESSORIES



**EMERSON-KERSHAW
HOODIE**
HOODIEMERSONBUILT
Sizes: S, M, L, XL, XXL



**EMERSON-KERSHAW
MEN’S SHIRT**
TSHIRTMENSEMERSONBUILT
Men’s sizes: M, L, XL, XXL



SPEEDSAFE





NEW

AMPLITUDE 2.5 3870



- A streamlined, practical, no-fuss smaller pocketknife
- SpeedSafe® assisted opening
- Opens with flipper
- Sturdy frame lock
- Reversible pocketclip (left/right)
- Designed by Todd Rexford

STEEL	HANDLE	BLADE	CLOSED
8Cr13MoV, satin finish	410 steel, titanium carbo-nitride coating	2.5 in.	3.5 in.

NEW

CRYO BLACKWASH 1555BW



- The award-winning Cryo, now in BlackWash
- SpeedSafe® assisted opening
- Opens with flipper or thumbstud
- Secure frame lock with lockbar stabilizer
- 4-position deep-carry pocketclip (right/left; tip-up/down)
- Designed by Rick Hinderer

STEEL	HANDLE	BLADE	CLOSED	WEIGHT
8Cr13MoV, black-oxide BlackWash™ finish	410 steel, black-oxide BlackWash™ finish	2.75 in.	3.75 in.	4.1 oz.

NEW

CRYO TANTO BLACKWASH 1555TBW



- Tanto blade style and BlackWash™ finish make the Cryo look more rugged than ever
- SpeedSafe® assisted opening
- Opens with flipper or thumbstud
- Secure frame lock with lockbar stabilizer
- 4-position deep-carry pocketclip (right/left; tip-up/down)
- Designed by Rick Hinderer

STEEL	HANDLE	BLADE	CLOSED	WEIGHT
8Cr13MoV, black-oxide BlackWash™ finish	410 steel, black-oxide BlackWash™ finish	2.75 in.	3.75 in.	4.1 oz.



1555TI CRYO



- Blade Magazine's 2012 Best Buy of the Year
- SpeedSafe® assisted opening
- Opens with flipper or thumbstud
- Secure frame lock with lockbar stabilizer
- 4-position deep-carry pocketclip (right/left; tip-up/down)
- Designed by Rick Hinderer

STEEL	HANDLE	BLADE	CLOSED	WEIGHT
8Cr13MoV, titanium carbo-nitride coating	410 steel, titanium carbo-nitride coating	2.75 in.	3.75 in.	4.1 oz.

NEW

1555G10 CRYO G-10



- G-10 front scale for enhanced grip, lighter weight
- SpeedSafe® assisted opening
- Opens with flipper or thumbstud
- Secure frame lock with lockbar stabilizer
- 4-position deep-carry pocketclip (right/left; tip-up/down)
- Designed by Rick Hinderer

STEEL	HANDLE	BLADE	CLOSED	WEIGHT
8Cr13MoV, stonewashed finish	Textured G-10 front, 410 steel back, stonewashed finish	2.75 in.	3.75 in.	3.7 oz.

1556TI CRYO II



- The award-winning Cryo now in a larger size
- SpeedSafe® assisted opening
- Opens with flipper or thumbstud
- Secure frame lock with lockbar stabilizer
- 4-position deep-carry pocketclip (right/left; tip-up/down)
- Designed by Rick Hinderer

STEEL	HANDLE	BLADE	CLOSED	WEIGHT
8Cr13MoV, titanium carbo-nitride coating	410 steel, titanium carbo-nitride coating	3.4 in.	4.4 in.	5.5 oz.



NEW

CRYO II TANTO BLACKWASH 1556TBW



- Tanto blade style and BlackWash™ finish make this larger Cryo look more rugged than ever
- SpeedSafe® assisted opening
- Opens with flipper or thumbstud
- Secure frame lock with lockbar stabilizer
- 4-position deep-carry pocketclip (right/left; tip-up/down)
- Designed by Rick Hinderer

STEEL	HANDLE	BLADE	CLOSED	WEIGHT
8Cr13MoV, black-oxide BlackWash™ finish	410 steel, black-oxide BlackWash™ finish	3.4 in.	4.4 in.	5.5 oz.

NEW

CRYO II BLACKWASH 1556BW



- The award-winning Cryo—in a larger size and BlackWashed
- SpeedSafe® assisted opening
- Opens with flipper or thumbstud
- Secure frame lock with lockbar stabilizer
- 4-position deep-carry pocketclip (right/left; tip-up/down)
- Designed by Rick Hinderer

STEEL	HANDLE	BLADE	CLOSED	WEIGHT
8Cr13MoV, black-oxide BlackWash™ finish	410 steel, black-oxide BlackWash™ finish	3.4 in.	4.4 in.	5.5 oz.

DIMENSION 3810



- A steel and titanium beauty
- SpeedSafe® assisted opening
- Opens with flipper or thumbstud
- Grooves in handle enhance secure grip
- Push-button lock makes closing the blade safe and easy
- Deep-carry pocketclip; knife rides low in the pocket

STEEL	HANDLE	BLADE	CLOSED	WEIGHT
8Cr13MoV, stonewashed finish	Machined titanium	3 in.	4.25 in.	5 oz.



- A small knife with spitfire style
- SpeedSafe® assisted opening with flipper
- Modified clip point enables spine finger placement
- Secure frame lock
- 3-position, deep-carry pocketclip
- Designed by Rick Hinderer

STEEL	HANDLE	BLADE	CLOSED
8Cr13MoV, matte grey titanium carbo-nitride coating	410 steel, matte grey titanium carbo-nitride coating	2 in.	2.8 in.

3560 EMBER

NEW



3840 FREEFALL



- Tactically styled blade with ergonomic handle contour for secure grip
- SpeedSafe® assisted opening with flipper
- Secure liner lock
- K-Texture™ on handle for enhanced grip
- Reversible deep-carry pocketclip (left/right)
- Lanyard hole

STEEL	HANDLE	BLADE	CLOSED	WEIGHT
8Cr13MoV, stonewashed finish	Glass-filled nylon, K-Texture™ grip	3.25 in.	4.25 in.	4.1 oz.



3850 SWERVE



- Right-sized, tough EDC and work knife
- Ergonomic handle swerves to fit the hand
- SpeedSafe® assisted opening with flipper or thumbstud
- Secure liner lock
- K-Texture™ on handle for enhanced grip
- Reversible deep-carry pocketclip (left/right)

STEEL	HANDLE	BLADE	CLOSED	WEIGHT
8Cr13MoV, stonewashed finish	Glass-filled nylon, K-Texture™ grip	3 in.	4.25 in.	4.8 oz.





KURO - SERRATED 1835TBLKST



- Standout looks, standout function
- SpeedSafe® assisted opening
- Partially serrated blade cuts tough or fibrous materials
- Opens with flipper
- Textured “scale pattern” handle for secure grip
- Secure liner lock
- 3-position pocketclip (right, tip-up/down; left, tip-up)

STEEL	HANDLE	BLADE	CLOSED	WEIGHT
8Cr13MoV, black-oxide coating	Glass-filled nylon	3.25 in.	4.25 in.	3.2 oz.

OSO SWEET 1830



- One sweet, versatile pocketknife
- SpeedSafe® assisted opening
- Opens with flipper
- Textured handle for secure grip
- Secure liner lock
- Reversible pocketclip (tip-up/down)

STEEL	HANDLE	BLADE	CLOSED	WEIGHT
8Cr13MoV, bead-blasted finish	Glass-filled nylon	3 in.	4.1 in.	3.2 oz.

BRAWLER 1990



- Tactical blade style provides the power to punch through tough materials
- SpeedSafe® assisted opening
- Opens with flipper
- Textured, machined handle for secure grip
- Secure liner lock
- 4-position pocketclip (right/left; tip-up/down)

STEEL	HANDLE	BLADE	CLOSED	WEIGHT
8Cr13MoV, black-oxide coating	Glass-filled nylon	3 in.	4.1 in.	3.9 oz.



1605CKTST CLASH - BLACK BLADE, SERRATED



- Drop-point blade handles just about any cutting task
- SpeedSafe® assisted opening
- Opens with flipper
- Aggressive two-step serration
- Textured handle for secure grip
- Secure liner lock
- Reversible pocketclip (tip-up/down)

STEEL	HANDLE	BLADE	CLOSED	WEIGHT
8Cr13MoV, black-oxide coating	Glass-filled nylon	3.1 in.	4.4 in.	4.3 oz.

1605 CLASH



1605

1605ST

- Drop-point blade with recurve handles just about any cutting task
- SpeedSafe® assisted opening
- Opens with flipper
- Textured handle for secure grip
- Secure liner lock
- Reversible pocketclip (tip-up/down)
- Aggressive two-step serration (1605ST)

STEEL	HANDLE	BLADE	CLOSED	WEIGHT
8Cr13MoV, bead-blasted finish	Glass-filled nylon	3.1 in.	4.4 in.	4.3 oz.

1678 CAMBER NEW



- SpeedSafe® assisted opening
- Opens with flipper
- Textured handle for secure grip
- Secure liner lock
- Reversible pocketclip (left/right)

STEEL	HANDLE	BLADE	CLOSED
S30V, stonewashed finish	6061-T6 anodized aluminum, Trac-Tec inserts	3 in.	4.2 in.



RJ I - SERRATED 1985ST



- Tactical blade style and grind for piercing power; slight belly curve for slicing, plus partial serration
- The larger of the RJ brothers
- SpeedSafe® assisted opening, flipper or thumbstud
- Textured handle for secure grip
- Secure liner lock
- Reversible deep-carry pocketclip (tip-up/down)

STEEL	HANDLE	BLADE	CLOSED	WEIGHT
8Cr13MoV, titanium carbo-nitride coating	Textured G-10	3.5 in.	4.6 in.	4.5 oz.

RJ II - SERRATED 1980ST



- Tactical blade style and grind for piercing power; slight belly curve for slicing, plus partial serration
- The smaller of the RJ brothers
- SpeedSafe® assisted opening, flipper or thumbstud
- Textured handle for secure grip
- Secure liner lock
- Reversible pocketclip (tip-up/down)
- Designed by RJ Martin

STEEL	HANDLE	BLADE	CLOSED	WEIGHT
8Cr13MoV, titanium carbo-nitride coating	Textured G-10	3.1 in.	4 in.	3.4 oz.

VOLT II - BLACK 3650CKTST



- A versatile pocketknife in basic black
- SpeedSafe® assisted opening
- Opens with flipper
- Aggressive two-step serration
- Textured handle for secure grip
- Secure liner lock
- Reversible pocketclip (tip-up/down)

STEEL	HANDLE	BLADE	CLOSED	WEIGHT
8Cr13MoV, black-oxide coating	Glass-filled nylon	3.25 in.	4 in.	3.3 oz.



- Multi-tasking clip-point blade style
- SpeedSafe® assisted opening
- Opens with flipper
- Textured handle for secure grip
- Secure liner lock
- Reversible pocketclip (tip-up/down)
- Two-step serration is a more aggressive style of serration (3650ST)

STEEL	HANDLE	BLADE	CLOSED	WEIGHT
8Cr13MoV, bead-blasted finish	Glass-filled nylon	3.25 in.	4 in.	3.3 oz.



- The multi-task-ready Volt II in stainless steel
- SpeedSafe® assisted opening
- Opens with flipper
- Sturdy frame lock
- 3-position pocketclip (right, tip-up/down; left, tip-up)

STEEL	HANDLE	BLADE	CLOSED	WEIGHT
8Cr13MoV, bead-blasted finish	410 steel, bead-blasted finish	3.25 in.	3.9 in.	4.3 oz.



- The popular Zing in pure stainless steel
- SpeedSafe® assisted opening
- Opens with flipper or thumbstud
- Sturdy frame lock
- 3-position pocketclip (right, tip-up/down; left, tip-up)

STEEL	HANDLE	BLADE	CLOSED	WEIGHT
8Cr13MoV, bead-blasted finish	410 steel, bead-blasted finish	3 in.	3.9 in.	3.3 oz.



3650 VOLT II



3655 VOLT II SS



1730SS ZING STAINLESS STEEL





NEW

SCRAMBLER BLACKWASH 3890BW



- BlackWash™ gives this classy knife a worn-leather jacket of cool
- SpeedSafe® assisted opening
- Opens with flipper
- Secure frame lock
- Reversible pocketclip; tip-up/tip-down
- Designed by RJ Martin

STEEL	HANDLE	BLADE	CLOSED	WEIGHT
8Cr13MoV, black-oxide BlackWash™ finish	Textured G-10/steel bolster front, 410 steel back, black-oxide BlackWash™ finish	3.5 in.	4.4 in.	5.2 oz.

SCRAMBLER 3890



- A classy pocketknife in cool grey titanium-nitride coating
- SpeedSafe® assisted opening
- Opens with flipper
- Secure frame lock
- Reversible pocketclip; tip-up/tip-down
- Designed by RJ Martin

STEEL	HANDLE	BLADE	CLOSED	WEIGHT
8Cr13MoV, titanium carbo-nitride coating	Textured G-10/steel bolster front, 410 steel back, titanium carbo-nitride coating	3.5 in.	4.4 in.	5.2 oz.

NEW THERMITE BLACKWASH 3880BW



- The popular Thermite, now in BlackWash™
- SpeedSafe® assisted opening
- Spanto blade
- Opens with flipper or thumbstud
- Secure frame lock with lockbar stabilizer
- 4-position deep-carry pocketclip (right/left; tip-up/down)
- Designed by Rick Hinderer

STEEL	HANDLE	BLADE	CLOSED	WEIGHT
8Cr13MoV, black-oxide BlackWash™ finish	Textured G-10 front, 410 steel back, black-oxide BlackWash™ finish	3.5 in.	4.9 in.	4.5 oz.



- Tactical style, practical performance
- “Spanto” tip is flat-ground for strong piercing
- SpeedSafe® assisted opening
- Opens with flipper or thumbstud
- Frame lock with frame lock stabilizer
- 4-position deep-carry pocketclip (right/left; tip-up/down)
- Designed by Rick Hinderer

STEEL	HANDLE	BLADE	CLOSED	WEIGHT
8Cr13MoV, stonewashed finish	Textured G-10 front, 410 steel back, stonewashed finish	3.5 in.	4.9 in.	4.9 oz.

3880 THERMITE



- The popular Blur is a natural for BlackWash™
- SpeedSafe® assisted opening
- Opens with thumbstud
- Secure inset liner lock
- Trac-Tec handle inserts for secure grip
- Reversible pocketclip (tip-up/down)
- Made in the USA

STEEL	HANDLE	BLADE	CLOSED	WEIGHT
Sandvik 14C28N, DLC BlackWash™ finish	6061-T6 anodized aluminum, Trac-Tec inserts	3.4 in.	4.5 in.	3.9 oz.

1670BW BLUR BLACKWASH NEW



- SpeedSafe® assisted opening
- Opens with thumbstud
- Secure inset liner lock
- Trac-Tec handle inserts for secure grip
- Reversible pocketclip (tip-up/down)
- Partially serrated blade cuts tough or fibrous materials (1670BLKST)
- Made in the USA

STEEL	HANDLE	BLADE	CLOSED	WEIGHT
Sandvik 14C28N, DLC coating	6061-T6 anodized aluminum, Trac-Tec inserts	3.4 in.	4.5 in.	3.9 oz.

1670BLK BLUR - BLACK

1670BLK



1670BLKST





BLUR - GLASS BREAKER 1670GBBLKST



- A must-have emergency tool
- Carbide glassbreaker tip
- SpeedSafe® assisted opening with thumbstud
- Partially serrated blade cuts through webbing/fibrous materials
- Secure inset liner lock
- Trac-Tec handle inserts for secure grip
- Reversible pocketclip (tip-up/down)
- Made in the USA

STEEL	HANDLE	BLADE	CLOSED	WEIGHT
Sandvik 14C28N, DLC coating	6061-T6 anodized aluminum, Trac-Tec inserts	3.4 in.	4.5 in.	3.9 oz.

BLUR - TANTO BLADE, BLACK 1670TBLKST



- The popular Blur—with a piercing-capable tanto blade
- SpeedSafe® assisted opening with thumbstud
- Partially serrated blade cuts tough or fibrous materials
- Trac-Tec handle inserts for secure grip
- Reversible pocketclip (tip-up/down)
- Made in the USA

STEEL	HANDLE	BLADE	CLOSED	WEIGHT
Sandvik 14C28N, DLC coating	6061-T6 anodized aluminum, Trac-Tec inserts	3.4 in.	4.5 in.	4.2 oz.

BLUR - S30V STONEWASH 1670S30V



- Step up to S30V steel for a sharp, tough edge
- SpeedSafe® assisted opening
- Opens with thumbstud
- Secure inset liner lock
- Trac-Tec handle inserts for secure grip
- Reversible pocketclip (tip-up/down)
- Made in the USA

STEEL	HANDLE	BLADE	CLOSED	WEIGHT
S30V, stonewashed finish	6061-T6 anodized aluminum, Trac-Tec inserts	3.4 in.	4.5 in.	4.2 oz.



1670DSBLK BLUR - DESERT SAND/BLACK



- SpeedSafe® assisted opening
- Opens with thumbstud
- Secure inset liner lock
- Trac-Tec handle inserts for secure grip
- Reversible pocketclip (tip-up/down)
- Made in the USA

STEEL	HANDLE	BLADE	CLOSED	WEIGHT
Sandvik 14C28N, DLC coating	6061-T6 anodized aluminum, Trac-Tec inserts	3.4 in.	4.5 in.	3.9 oz.

1670OLBLK BLUR - OLIVE/BLACK



- SpeedSafe® assisted opening
- Opens with thumbstud
- Secure inset liner lock
- Trac-Tec handle inserts for secure grip
- Reversible pocketclip (tip-up/down)
- Made in the USA

STEEL	HANDLE	BLADE	CLOSED	WEIGHT
Sandvik 14C28N, DLC coating	6061-T6 anodized aluminum, Trac-Tec inserts	3.4 in.	4.5 in.	3.9 oz.

1670RDBLKST BLUR - RED/BLACK



- SpeedSafe® assisted opening with thumbstud
- Partially serrated blade cuts tough or fibrous materials
- Secure inset liner lock
- Trac-Tec handle inserts for secure grip
- Reversible pocketclip (tip-up/down)
- Made in the USA

STEEL	HANDLE	BLADE	CLOSED	WEIGHT
Sandvik 14C28N, DLC coating	6061-T6 anodized aluminum, Trac-Tec inserts	3.4 in.	4.5 in.	3.9 oz.

CHIVE1600



- Everybody's favorite small pocketknife
- SpeedSafe® assisted opening with flipper
- Sturdy frame lock
- Tip-Lock slider keeps blade securely closed when folded
- Single-position pocketclip
- Made in the USA

STEEL	HANDLE	BLADE	CLOSED	WEIGHT
420HC, bead-blasted finish	410 steel, bead-blasted finish	1.9 in.	2.9 in.	1.7 oz.

CHIVE1600BLK



- Everybody's favorite small pocketknife
- SpeedSafe® assisted opening with flipper
- Sturdy frame lock
- Tip-Lock slider keeps blade securely closed when folded
- Single-position pocketclip
- Polished DLC coating
- Made in the USA

STEEL	HANDLE	BLADE	CLOSED	WEIGHT
420HC, DLC coating, high polish finish	410 steel, DLC coating, high polish finish	1.9 in.	2.9 in.	1.7 oz.

CHIVE - RAINBOW1600VIB



- The most spectacular little knife ever
- SpeedSafe® assisted opening with flipper
- Sturdy frame lock
- Tip-Lock slider keeps blade securely closed when folded
- Single-position pocketclip
- Made in the USA

STEEL	HANDLE	BLADE	CLOSED	WEIGHT
420HC, titanium-oxide rainbow coating	410 steel, titanium-oxide rainbow coating	1.9 in.	2.9 in.	1.7 oz.

1600PINKCHIVE - PINK



- Perfect in pink
- SpeedSafe® assisted opening with flipper
- Secure liner lock
- Tip-Lock slider keeps blade securely closed when folded
- Single-position pocketclip
- Made in the USA

STEEL	HANDLE	BLADE	CLOSED	WEIGHT
420HC, bead-blasted finish	6061-T6 anodized aluminum	1.9 in.	2.9 in.	1.5 oz.

1620SCALLION - ALUMINUM



RED
1620RD

- A right-sized pocketknife in colors to please just about everyone
- SpeedSafe® assisted opening with flipper
- Secure liner lock
- Tip-Lock slider keeps blade securely closed when folded
- Single-position pocketclip
- Made in the USA

STEEL	420HC, bead-blasted finish
HANDLE	6061-T6 anodized aluminum
BLADE	2.4 in.
CLOSED	3.5 in.
WEIGHT	2.5 oz.



NAVY BLUE
1620NB



REAL TREE
1620C



OLIVE DRAB
1620OL



PURPLE
1620PUR



SCALLION - RAINBOW

1620VIB



- Our famous rainbow finish in a right-sized pocketknife
- SpeedSafe® assisted opening with flipper
- Sturdy frame lock
- Tip-Lock slider keeps blade securely closed when folded
- Single-position pocketclip
- Made in the USA

STEEL	HANDLE	BLADE	CLOSED	WEIGHT
420HC, titanium-oxide rainbow coating	410 steel, titanium-oxide rainbow coating	2.4 in.	3.5 in.	2.9 oz.

SCALLION - BLACK

1620



- A right-sized pocketknife
- SpeedSafe® assisted opening with flipper
- Secure liner lock
- Tip-Lock slider keeps blade securely closed when folded
- Single-position pocketclip
- Partially serrated blade cuts tougher materials (1620ST)
- Made in the USA

STEEL	HANDLE	BLADE	CLOSED	WEIGHT
420HC, bead-blasted finish	Glass-filled nylon	2.4 in.	3.5 in.	2.9 oz.

SCALLION - FRAME LOCK

1620FL



- The perfect size for pocket or purse carry
- SpeedSafe® assisted opening with flipper
- Sturdy frame lock
- Tip-Lock slider keeps blade securely closed when folded
- Single-position pocketclip
- Partially serrated blade adds versatile cutting capability (1620FLST)
- Made in the USA

STEEL	HANDLE	BLADE	CLOSED	WEIGHT
420HC, bead-blasted finish	410 steel, bead-blasted finish	2.4 in.	3.5 in.	2.9 oz.



1660BLKW LEEK BLACKWASH

NEW



- The popular Leek—now in BlackWash™
- SpeedSafe® assisted opening
- Opens with flipper
- Sturdy frame lock
- Tip-Lock slider keeps blade securely closed when folded
- Reversible pocketclip (tip-up/down)
- Made in the USA

STEEL	HANDLE	BLADE	CLOSED	WEIGHT
Sandvik 14C28N, BlackWash™ finish	410 steel, DLC BlackWash™ finish	3 in.	4 in.	3.1 oz.



SCALLION - BLACK

1620



- A right-sized pocketknife
- SpeedSafe® assisted opening with flipper
- Secure liner lock
- Tip-Lock slider keeps blade securely closed when folded
- Single-position pocketclip
- Partially serrated blade cuts tougher materials (1620ST)
- Made in the USA

STEEL	HANDLE	BLADE	CLOSED	WEIGHT
420HC, bead-blasted finish	Glass-filled nylon	2.4 in.	3.5 in.	2.9 oz.

SCALLION - FRAME LOCK

1620FL



- The perfect size for pocket or purse carry
- SpeedSafe® assisted opening with flipper
- Sturdy frame lock
- Tip-Lock slider keeps blade securely closed when folded
- Single-position pocketclip
- Partially serrated blade adds versatile cutting capability (1620FLST)
- Made in the USA

STEEL	HANDLE	BLADE	CLOSED	WEIGHT
420HC, bead-blasted finish	410 steel, bead-blasted finish	2.4 in.	3.5 in.	2.9 oz.



- The original Leek
- SpeedSafe® assisted opening with flipper
- Sturdy frame lock
- Tip-Lock slider keeps blade securely closed when folded
- Reversible pocketclip (tip-up/down)
- Partially serrated blade cuts tough or fibrous materials (1660ST)
- Made in the USA

STEEL	HANDLE	BLADE	CLOSED	WEIGHT
Sandvik 14C28N, bead-blasted finish	410 steel, bead-blasted finish	3 in.	4 in.	3.0 oz.



1660 LEEK

1660

1660ST

1660CKT LEEK - BLACK



1660CKT

1660CKTST



- The popular Leek in basic black
- SpeedSafe® assisted opening
- Opens with flipper
- Sturdy frame lock
- Tip-Lock slider keeps blade securely closed when folded
- Reversible pocketclip (tip-up/down)
- Partially serrated blade cuts tough or fibrous materials (1660CKTST)
- Made in the USA

STEEL	HANDLE	BLADE	CLOSED	WEIGHT
Sandvik 14C28N, DLC coating	410 steel, DLC coated	3 in.	4 in.	3.0 oz.



LEEK 1660

STEEL	Sandvik 14C28N, bead-blasted finish
HANDLE	6061-T6 anodized aluminum
BLADE	3 in.
CLOSED	4 in.
WEIGHT	2.4 oz.



OLIVE DRAB
1660OL



ORANGE
1660OR



PURPLE
1660PUR

- Our most popular pocketknife ever—in colors to please everyone
- SpeedSafe® assisted opening
- Opens with flipper
- Secure liner lock
- Tip-Lock slider keeps blade securely closed when folded
- Reversible pocketclip (tip-up/down)
- Made in the USA



1660SWBLK LEEK - BLACK, STONE WASH



- By customer request—black handle, stonewashed blade
- SpeedSafe® assisted opening
- Opens with flipper
- Secure liner lock
- Tip-Lock slider keeps blade securely closed when folded
- Reversible pocketclip (tip-up/down)
- Made in the USA

STEEL	HANDLE	BLADE	CLOSED	WEIGHT
Sandvik 14C28N, stonewashed finish	6061-T6 anodized aluminum	3 in.	4 in.	2.4 oz.



1660CB LEEK - COMPOSITE BLADE



- The Leek with our patented Composite Blade Technology
- SpeedSafe® assisted opening with flipper
- Sturdy frame lock
- Tip-Lock slider keeps blade securely closed when folded
- Reversible pocketclip (tip-up/down)
- Made in the USA

STEEL	HANDLE	BLADE	CLOSED	WEIGHT
D2/Sandvik 14C28N, bead-blasted finish	410 steel	3 in.	4 in.	3.1 oz.

NEW

LEEK - TEAL 1660TEAL



- New addition to our popular Leek series—now in bright teal
- SpeedSafe® assisted opening
- Opens with flipper
- Secure liner lock
- Reversible pocketclip (tip-up/down)
- Made in the USA



1660VIB LEEK - RAINBOW



- Our most spectacular Leek
- SpeedSafe® assisted opening with flipper
- Sturdy frame lock
- Tip-Lock slider keeps blade securely closed when folded
- Reversible pocketclip (tip-up/down)
- Made in the USA

STEEL	HANDLE	BLADE	CLOSED	WEIGHT
Sandvik 14C28N, titanium-oxide rainbow coating	410 steel, titanium-oxide rainbow coating	3 in.	4 in.	3 oz.





SHALLOT 1840



1840

1840ST



- A larger knife with a versatile recurve blade
- SpeedSafe® assisted opening
- Opens with flipper
- Sturdy frame lock
- Reversible pocketclip (tip-up/down)
- Partially serrated blade cuts tough or fibrous materials (1840ST)
- Made in the USA

STEEL	HANDLE	BLADE	CLOSED	WEIGHT
Sandvik 14C28N, bead-blasted finish	410 steel, bead-blasted finish	3.5 in.	4.4 in.	4.2 oz.

SHALLOT - BLACK 1840CKT



1840CKT

1840CKTST

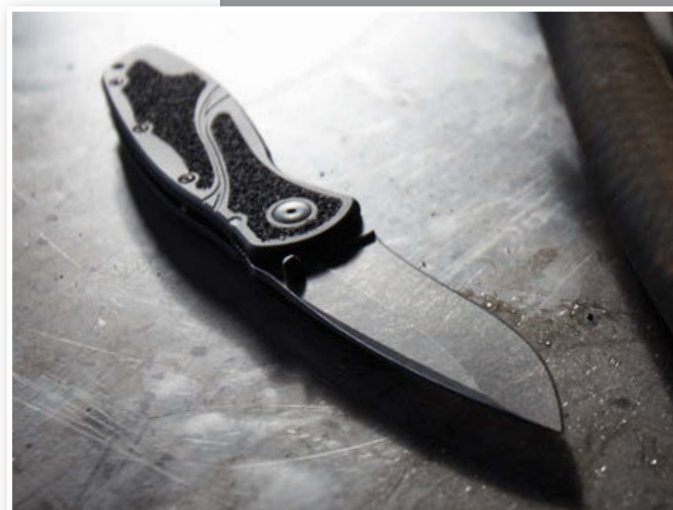


- A larger knife with a versatile recurve blade
- SpeedSafe® assisted opening
- Opens with flipper
- Sturdy frame lock
- Reversible pocketclip (tip-up/down)
- Partially serrated blade cuts tough or fibrous materials (1840CKTST)
- Made in the USA

STEEL	HANDLE	BLADE	CLOSED	WEIGHT
Sandvik 14C28N, DLC coating	410 steel, DLC coating	3.5 in.	4.4 in.	4.2 oz.

"My father is a mechanic. Every day he has his Kershaw Blur and it has never failed him. I have also seen this knife cut through stuff that was impossible for [other] cheapies. I am sticking with Kershaw forever. I have seen the Blur cut through anything from electrical cables one inch or two inches thick to breaking bones on deer while field dressing them."

—Jeff M., KY



- A new Knockout of a color
- SpeedSafe® assisted opening
- Opens with flipper or thumbstud
- Secure sub-frame lock
- 4-position deep-carry pocketclip (right/left; tip-up/down)
- Made in the USA

STEEL	HANDLE	BLADE	CLOSED	WEIGHT
Sandvik 14C28N, DLC coating	6061-T6 anodized aluminum	3.25 in.	4.6 in.	3.4 oz.

1870OLBLK KNOCKOUT OLIVE/BLACK NEW



- SpeedSafe® assisted opening
- Opens with flipper or thumbstud
- Secure sub-frame lock
- 4-position deep-carry pocketclip (right/left; tip-up/down)
- Made in the USA

STEEL	HANDLE	BLADE	CLOSED	WEIGHT
Sandvik 14C28N, satin finish	6061-T6 anodized aluminum	3.25 in.	4.6 in.	3.4 oz.

1870 KNOCKOUT



- D2 on the cutting edge for razor sharpness
- SpeedSafe® assisted opening
- Opens with flipper or thumbstud
- Secure liner lock
- Three-position pocketclip for tip-up/tip-down (right) or left/right carry
- Made in the USA

STEEL	HANDLE	BLADE	CLOSED	WEIGHT
D2/Sandvik 14C28N, bead-blasted finish	Textured G-10	3.4 in.	4.6 in.	4.8 oz.

1780CB RAKE





PISTON 1860



- Dramatic sculpting, top performance
- SpeedSafe® assisted opening
- Opens with flipper
- Secure inset liner lock
- 4-position pocketclip (right/left; tip-up/down)
- Made in the USA

STEEL	HANDLE	BLADE	CLOSED	WEIGHT
Sandvik 14C28N, satin finish	G-10	3.5 in.	5 in.	4 oz.

BLACKOUT 1550



- A Blade Magazine Best Buy—a professional fave!
- SpeedSafe® assisted opening
- Opens with thumbstud
- Secure inset liner lock
- Single-position pocketclip
- Partially serrated blade cuts tough or fibrous materials (1550ST)
- Made in the USA

STEEL	HANDLE	BLADE	CLOSED	WEIGHT
Sandvik 14C28N, DLC coating	Glass-filled nylon	3.25 in.	4.5 in.	3.5 oz.

WHIRLWIND 1560



- One of the original SpeedSafe® knives
- SpeedSafe® assisted opening
- Opens with thumbstud
- Secure inset liner lock
- Single-position pocketclip
- Partially serrated blade cuts tough or fibrous materials (1560ST)
- Made in the USA

STEEL	HANDLE	BLADE	CLOSED	WEIGHT
Sandvik 14C28N, satin finish	Glass-filled nylon	3.25 in.	4.5 in.	3.5 oz.



- Amazing looks, value price
- SpeedSafe assisted opening
- Opens with flipper or thumbstud
- Textured handle for secure grip
- Sturdy frame lock
- Single position, deep-carry pocketclip

STEEL	HANDLE	BLADE	CLOSED
3Cr13, black-oxide BlackWash™ finish	Stainless steel, black-oxide BlackWash™ finish	3.4 in.	4.6 in.

1301BW STARTER NEW



- BadA tactical looks at a value price
- SpeedSafe assisted opening
- Opens with flipper or thumbstud
- Textured handle for secure grip
- Sturdy frame lock
- Single-position, deep-carry pocketclip

STEEL	HANDLE	BLADE	CLOSED
3Cr13, black-oxide BlackWash™ finish	Stainless steel, black-oxide BlackWash™ finish	4 in.	5.25 in.

1302BW LIFTER NEW



- An impressive EDC at a value price
- SpeedSafe assisted opening
- Opens with flipper or thumbstud
- Textured handle for secure grip
- Sturdy frame lock
- Single-position, deep-carry pocketclip

STEEL	HANDLE	BLADE	CLOSED
3Cr13, black-oxide BlackWash™ finish	Stainless steel, black-oxide BlackWash™ finish	3.5 in.	4.5 in.

1303BW MANIFOLD NEW





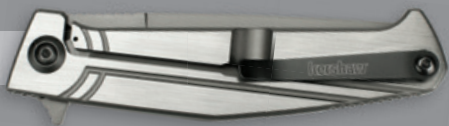
MANUAL





NEW

NURA 3.0 4030TIKVT

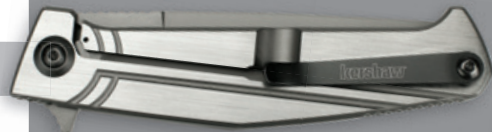


- An aircraft-sleek knife in a compact size
- KVT ball-bearing opening system
- Opens with flipper
- Sturdy frame lock
- Single-position pocketclip
- Designed by Dmitry Sinkevich

STEEL	HANDLE	BLADE	CLOSED
8Cr13MoV, titanium carbo-nitride coating	410 steel, sanded titanium carbo-nitride coating	3 in.	4.1 in.

NEW

NURA 3.5 4035TIKVT



- Same aircraft-inspired design, larger size
- KVT ball-bearing opening system
- Opens with flipper
- Sturdy frame lock
- Single-position pocketclip
- Designed by Dmitry Sinkevich

STEEL	HANDLE	BLADE	CLOSED
8Cr13MoV, titanium carbo-nitride coating	410 steel, sanded titanium carbo-nitride coating	3.5 in.	4.6 in.

NEW

THISTLE 3812



- New button lock
- Manual opening
- Opens with thumbstud
- Push button releases secure liner lock for safer, easier closing
- K-Texture™ handle provides a secure grip
- Reversible pocketclip (left/right)

STEEL	HANDLE	BLADE	CLOSED
8Cr13MoV, stonewashed finish	Glass-filled nylon	3.25 in.	4.4 in.



- A stylish manual folder
- This is the smaller of our two Injection models
- Opens with thumbstud
- Secure liner lock
- Reversible pocketclip (left/right)
- Designed by Todd Rexford

STEEL	HANDLE	BLADE	CLOSED	WEIGHT
8Cr13MoV, bead-blasted finish	Machined G-10	3 in.	4 in.	3.3 oz.

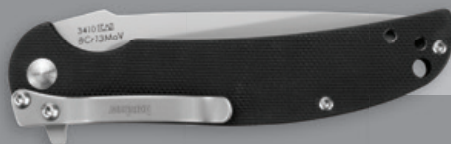
3820 INJECTION 3.0



- A stylish manual folder
- This is the larger of our two Injection models
- Opens with thumbstud
- Secure liner lock
- Reversible pocketclip (left/right)
- Designed by Todd Rexford

STEEL	HANDLE	BLADE	CLOSED	WEIGHT
8Cr13MoV, bead-blasted finish	Machined G-10	3.5 in.	4.5 in.	4.4 oz.

3830 INJECTION 3.5



- Slim, lightweight, and a value buy
- Manual opening
- Opens with flipper
- Secure liner lock
- Reversible pocketclip (tip-up/down)
- Designed by RJ Martin

STEEL	HANDLE	BLADE	CLOSED	WEIGHT
8Cr13MoV, bead-blasted finish	Textured G-10	3.5 in.	3.9 in.	2 oz.

3410 CHILL





SKYLINE 1760



- One of our best reviewed knives
- Manual opening
- Opens with flipper
- Secure liner lock
- Reversible pocketclip (tip-up/down)
- Made in the USA

STEEL	HANDLE	BLADE	CLOSED	WEIGHT
Sandvik 14C28N, bead-blasted finish	Textured G-10	3.1 in.	4.25 in.	2.5 oz.

JUNKYARD DOG II 1725CB



- Big, bold and distinctive
- Features our patented Composite Blade Technology
- Manual opening
- Opens with flipper
- Secure liner lock
- Single-position pocketclip
- Made in the USA

STEEL	HANDLE	BLADE	CLOSED	WEIGHT
D2/Sandvik 14C28N, bead-blasted finish	Textured G-10	3.6 in.	4.9 in.	5.8 oz.

GRANT COUNTY 3100



- A smaller outdoor or work knife, but plenty tough
- Manual opening
- Opens with nail tick
- Sturdy back lock

STEEL	HANDLE	BLADE	CLOSED	WEIGHT
8Cr13MoV, satin finish	Stainless steel, cross-grooved ABS inlay	1.9 in.	2.6 in.	1.5 oz.



- The little outdoor knife that goes anywhere
- Manual opening
- Opens with nail tick
- Sturdy back lock
- Sheepsfoot blade provides a sturdy point, great for straight cuts (3115BT)

STEEL	HANDLE	BLADE	CLOSED	WEIGHT
8Cr13MoV, satin finish	Stainless steel, cross-grooved ABS inlay	2.5 in.	4.1 in.	2.7 oz.



- A medium-sized, multi-purpose outdoor knife
- Manual opening
- Opens with nail tick
- Sturdy back lock
- Includes nylon sheath

STEEL	HANDLE	BLADE	CLOSED	WEIGHT
8Cr13MoV, satin finish	Stainless steel, cross-grooved ABS inlay	3 in.	4.1 in.	5 oz.



- A larger, multi-purpose outdoor knife
- Manual opening
- Opens with nail tick
- Sturdy back lock
- Includes nylon sheath

STEEL	HANDLE	BLADE	CLOSED	WEIGHT
8Cr13MoV, satin finish	Stainless steel, cross-grooved ABS inlay	3.5 in.	4.9 in.	7.6 oz.



3115 CORRAL CREEK

3115



3115BT



3120 BLACK GULCH



3140 WILDCAT RIDGE





MULTI-FUNCTION



MULTI-FUNCTION

SELECT FIRE 1920



STEEL	HANDLE	BLADE	CLOSED	WEIGHT
8Cr13MoV, satin finish	Glass-filled nylon	3.4 in.	4.25 in.	5 oz.



- Useful tools—plus a big, handy blade
- Manual opening with thumbstud
- 1/4-in. hex drive, 2 flathead, 2 crosshead bits
- Ruler on bit drive shaft
- Secure liner lock
- Single position pocketclip



- Multi-function tool is an outdoor must-have
- SpeedSafe® assisted opening
- Opens with flipper or thumbstud
- Secure locking liner for main blade and saw blade
- Carabiner clips to belt, locks blade closed when in use
- Single-position, deep-carry pocketclip

STEEL	HANDLE	BLADE	CLOSED	WEIGHT
8Cr13MoV, satin finish	Aluminum, rubber insert	3 in.	4.25 in.	5 oz.



MULTI-FUNCTION



8000OL FUNXION OUTDOOR

NEW

SHUFFLE 8700BLK



STEEL	HANDLE	BLADE	CLOSED	WEIGHT
8Cr13MoV, black-oxide coating	Glass-filled nylon, K-Texture™ grip	2.4 in.	3.25 in.	2.8 oz.



- An awesome little multi-function tool
- Manual opening
- Opens with thumbstud
- Screwdriver tip doubles as lanyard attachment
- Built-in bottle opener on back
- Secure liner lock
- Reversible deep-carry pocketclip (left/right)



- Multi-function tool with rescue features
- SpeedSafe® assisted opening with flipper or thumbstud
- Carbide glassbreaker tip, cord cutter, hex wrench, screwdriver tip, partially serrated blade
- Secure locking liner for main blade and tools
- Carabiner clips to belt, locks blade closed when in use
- Single-position, deep-carry pocketclip

STEEL	HANDLE	BLADE	CLOSED	WEIGHT
8Cr13MoV, black-oxide coating	Aluminum, rubber insert	3 in.	4.25 in.	5 oz.



8100GRYST FUNXION EMT

SHUFFLE 8700



STEEL	HANDLE	BLADE	CLOSED	WEIGHT
8Cr13MoV, bead-blasted finish	Glass-filled nylon, K-Texture™ grip	2.4 in.	3.25 in.	2.8 oz.



- An awesome little multi-function tool
- Manual opening
- Opens with thumbstud
- Screwdriver tip doubles as lanyard attachment
- Built-in bottle opener on back
- Secure liner lock
- Reversible deep-carry pocketclip (left/right)



- Multi-function tool for every day tasks
- SpeedSafe® assisted opening
- Opens with flipper or thumbstud
- Secure locking liner for main blade and tools
- Includes hex wrench, screwdriver tip
- Carabiner clips to belt, locks blade closed when in use
- Single-position, deep-carry pocketclip

STEEL	HANDLE	BLADE	CLOSED	WEIGHT
8Cr13MoV, satin finish	Aluminum, rubber insert	3.4 in.	4.25 in.	5 oz.



8200RD FUNXION DIY



HUNTING



LONEROCK FOLDING DROP POINT 1898



- A compact hunting folder
- K-Texture™ rubberized overmold on handle ensures a secure grip in outdoor conditions
- Coating provides additional blade protection in harsh environments
- Sturdy lock back
- Includes sheath

STEEL	HANDLE	BLADE	CLOSED	WEIGHT
8Cr13MoV, titanium carbo-nitride coating	Glass-filled nylon, rubber overmold, K-Texture™ grip	3.5 in.	4.75 in.	5.5 oz.

LONEROCK FOLDING GUT HOOK 1898GH



- A compact hunting folder
- K-Texture™ rubberized overmold on handle ensures a secure grip in outdoor conditions
- Coating provides additional blade protection in harsh environments
- Sturdy lock back
- Includes sheath

STEEL	HANDLE	BLADE	CLOSED	WEIGHT
8Cr13MoV, titanium carbo-nitride coating	Glass-filled nylon, rubber overmold, K-Texture™ grip	3.5 in.	4.75 in.	5.3 oz.

LONEROCK SMALL FIXED BLADE 1895



- For a compact hunting knife, choose this one
- K-Texture™ rubberized overmold on handle ensures a secure grip in outdoor conditions
- Coating provides additional blade protection in harsh environments
- Includes sheath

STEEL	HANDLE	BLADE	OVERALL	WEIGHT
8Cr13MoV, titanium carbo-nitride coating	Glass-filled nylon, rubber overmold, K-Texture™ grip	3.75 in.	8.25 in.	3.6 oz.



1896GH LONEROCK LARGE FIXED BLADE



- For a larger hunting knife, choose this one
- K-Texture™ rubberized overmold on handle ensures a secure grip in outdoor conditions
- Coating provides additional blade protection in harsh environments
- Includes sheath



STEEL	HANDLE	BLADE	OVERALL	WEIGHT
8Cr13MoV, titanium carbo-nitride coating	Glass-filled nylon, rubber overmold, K-Texture™ grip	4.25 in.	9.4 in.	5.6 oz.



- Unique design zips through skinning tasks
- K-Texture™ rubberized overmold on handle ensures a secure grip in outdoor conditions
- Coating provides additional blade protection in harsh environments
- Includes sheath

1894 LONEROCK ZIPIT PRO



STEEL	HANDLE	BLADE	OVERALL	WEIGHT
8Cr13MoV, titanium carbo-nitride coating	Glass-filled nylon, rubber overmold, K-Texture™ grip	3.4 in.	9 in.	3.8 oz.



- KVT ball-bearing opening system
- Opens with flipper
- K-Texture™ handle overlays for secure grip
- Sturdy frame lock
- Reversible deep-carry pocketclip (tip-up/down)
- Designed by Matt Diskin

1086 STROBE NEW



STEEL	HANDLE	BLADE	CLOSED
8Cr13MoV, stonewashed finish	410 steel, glass-filled nylon K-Texture™ overlays	3.3 in.	4.25 in.



DISKIN HUNTER FIXED BLADE 1085



- Big, bold, powerful
- Classic drop-point blade
- Slim handle fits securely in the hand for ultra-comfortable grip
- Includes sheath
- Designed by Matt Diskin
- Full tang
- Made in the USA

STEEL	HANDLE	BLADE	OVERALL	WEIGHT
Sandvik 14C28N, stonewashed finish	Textured G-10	4.6 in.	9.5 in.	5.4 oz.

ALASKAN BLADE TRADER 1098AK



- Get more blades in less space
- Multiple, interchangeable blades, one handle
- Big skinning blade with non-clog gut hook
- Multi-purpose hunting blade
- Handy saw blade
- Quik-Lock mechanism makes it easy to change blades
- Everything stores in a handy leather sheath

STEEL	HANDLE	BLADE	WEIGHT
AUS6A (BT-11), 420J2 (BT-3), saw steel (BT-5), satin finish	Co-polymer	3.5 in. (BT-3), 4.5 in. (BT-11), 5.5 in. (BT-5)	11.6 oz. (total)

“Kershaw, your knife got my dad to see knives the way I see them. We are naturally really close but have bonded even further over knives. I am seriously thinking about trying hunting this year, as I’ll be done with school. All I can say is thank you for your superior products! They really do change traditions and minds.”

—Ryan W. Menomonie, WI





OUTDOOR





NEW

SIEGE 1073



STEEL	HANDLE	BLADE	OVERALL
3Cr13, black-oxide coating	Full tang, Glass-filled nylon scales	4 in.	16 in.

- With hatchet head, spike, nail-puller & pry bar
- Full-tang construction
- Riveted Glass-filled nylon handle scales
- Includes nylon sheath (not pictured)



- Drop-forged for wood-whacking strength
- Handle overmold for secure grip
- Includes lanyard
- Includes sheath

CAMP AX 1018



STEEL	HANDLE	BLADE	OVERALL	WEIGHT
Drop-forged high-carbon	Sure grip textured overmold	3.5 in.	11 in.	14.5 oz.

TASKMASTER SAW 2555



- Ideal for backwoods or backyard
- Tough enough for even sizeable branches
- Powdercoating protects the blade
- Push button lock for secure lock up and easy close
- Rubberized handle for super secure grip
- Lanyard hole

STEEL	HANDLE	BLADE	CLOSED	WEIGHT
High-carbon steel, powdercoat	Glass-filled nylon, rubber overlay	7 in.	9.25 in.	9.2 oz.



1077 CAMP 10



- One of our most well-reviewed products
- Heavy-duty blade
- Full-tang construction
- Rubber overmold on handle for secure grip
- Double lanyard holes
- Includes molded sheath, belt loop

STEEL	HANDLE	BLADE	OVERALL	WEIGHT
65Mn, powdercoat	Full tang, glass-filled nylon, sure-grip textured rubber overmold	10 in.	16 in.	1 lb. 3 oz.



- Our medium-huge camp knife
- Heavy-duty blade
- Full-tang construction
- Rubber overmold on handle for secure grip
- Double lanyard holes
- Includes molded sheath, belt loop

STEEL	HANDLE	BLADE	OVERALL	WEIGHT
65Mn, powdercoat	Full tang, glass-filled nylon, sure-grip textured rubber overmold	14 in.	20 in.	1 lb. 14 oz.



- Our biggest camp knife
- Heavy-duty blade
- Full-tang construction
- Rubber overmold on handle for secure grip
- Double lanyard holes
- Includes molded sheath, belt loop

STEEL	HANDLE	BLADE	OVERALL	WEIGHT
65Mn, powdercoat	Full tang, glass-filled nylon, sure-grip textured rubber overmold	18 in.	24 in.	2 lb. 14 oz.





TASKMASTER SHEARS 1120



- A must-have home, shop, or camp tool
- Shears unhinge for easy cleaning
- Built-in nutcracker
- Jar opener
- Bone notch
- Screwdriver tips in end of handle

STEEL	HANDLE	BLADE	OVERALL	WEIGHT
High-carbon steel	Non-slip overmold	3.5 in.	8.9 in.	5.1 oz.

NEW

SECRET AGENT 4007



- New fixed-blade boot knife
- Spear-point blade
- Rubber handle overmold for extra-secure grip
- Lanyard hole in handle
- Includes molded dual-carry sheath with clip/leg straps

STEEL	HANDLE	BLADE	OVERALL
8Cr13MoV, black-oxide coating	Glass-filled nylon, sure-grip textured rubber overmold	4.4 in.	8.7 in.

"Great product, great company. My work as a QA engineer in the EV industry has taught me what innovation and craftsmanship mean. Kershaw embodies both!"

—John S.





FISHING 



NEW

12" CURVED

1241



STEEL	HANDLE	BLADE	OVERALL
420J2 steel, satin finish	Glass-filled nylon, rubber overmold, K-Texture™ grip	12 in.	17.7 in.

Endorsed by Roland Martin

Roland Martin

- Ideal for breaking down larger fish
- K-Texture™ handle for secure grip
- Textured, rubberized handle ensures grip in marine conditions
- Includes sheath

NEW

9" CURVED

1242GE



STEEL	HANDLE	BLADE	OVERALL
420J2 steel, satin finish	Glass-filled nylon, rubber overmold, K-Texture™ grip	9 in.	14.7 in.

Endorsed by Roland Martin

Roland Martin

- Breaks down large to medium-sized fish
- K-Texture™ handle for secure grip
- Textured, rubberized handle ensures grip in marine conditions
- Includes sheath

NEW

7" BONING WITH SPOON

1243SH



STEEL	HANDLE	BLADE	OVERALL
420J2 steel, satin finish	Glass-filled nylon, rubber overmold, K-Texture™ grip	7 in.	14.5 in.

Endorsed by Roland Martin

Roland Martin

- All-around boning and cleaning knife
- K-Texture™ handle for secure grip
- Textured, rubberized handle ensures grip in marine conditions
- Includes sheath



1247

7 1/2" FILLET

NEW



STEEL	HANDLE	BLADE	OVERALL
420J2 steel , satin finish	Glass-filled nylon, rubber overmold, K-Texture™ grip	7.5 in.	12.8 in.

Endorsed by Roland Martin

Roland Martin

- K-Texture™ handle for secure grip
- Textured, rubberized handle ensures grip in marine conditions
- Includes sheath

1249

9 1/2" FILLET

NEW



STEEL	HANDLE	BLADE	OVERALL
420J2 steel, satin finish	Glass-filled nylon, rubber overmold, K-Texture™ grip	9.5 in.	14.8 in.

Endorsed by Roland Martin

Roland Martin

- K-Texture™ handle for secure grip
- Textured, rubberized handle ensures grip in marine conditions
- Includes sheath



1258

FOLDING FILLET

NEW



STEEL	HANDLE	BLADE	CLOSED
420J2 steel, satin finish	Glass-filled nylon, rubber overmold, K-Texture™ grip	6.3 in.	7.5 in.

Endorsed by Roland Martin

Roland Martin

- Folding knife makes for compact filleting
- K-Texture™ handle for secure grip
- Textured, rubberized handle ensures grip in marine conditions
- Sturdy lock back
- Lanyard hole



7" FILLET KNIFE 1257

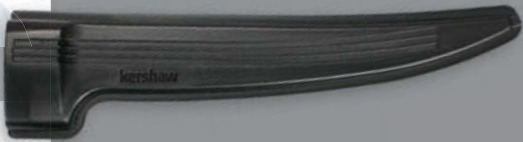
Endorsed by Roland Martin

Roland Martin



- One of our top-selling knives
- Co-polymer handle provides a secure grip
- Soft-yet-firm texture makes filleting less tiring
- Includes ABS sheath

STEEL	HANDLE	BLADE	OVERALL	WEIGHT
420J2, satin finish	Co-polymer, non-slip overmold grip	7 in.	12.25 in.	3.7 oz.



9" FILLET KNIFE 1259

Endorsed by Roland Martin

Roland Martin



- Longer blade for larger fish
- Co-polymer handle provides a secure grip
- Soft-yet-firm texture makes filleting less tiring
- Includes ABS sheath

STEEL	HANDLE	BLADE	OVERALL	WEIGHT
420J2, satin finish	Co-polymer, non-slip overmold grip	9 in.	14.25 in.	3.9 oz.



AMPHIBIAN 1006K



- Must-have safety equipment for every diver
- Rust resistant stainless steel
- Skeletonized handle for light weight
- Includes diver's sheath

STEEL	HANDLE	BLADE	OVERALL	WEIGHT
420J2, satin finish	420J2 full-tang skeleton, co-polymer insert	3.75 in.	7.25 in.	3.2 oz.



- Neon accents for marine visibility
- Rust resistant stainless steel
- Skeletonized handle for light weight
- Includes diver's sheath

STEEL	HANDLE	BLADE	OVERALL	WEIGHT
420J2, satin finish	Neon plastic, co-polymer over-mold	3.75 in.	7.75 in.	3 oz.



1008 SEA HUNTER



- Blunt-tip knife for extra safety
- Rust resistant stainless steel
- Skeletonized handle for light weight
- Includes diver's sheath

STEEL	HANDLE	BLADE	CLOSED	WEIGHT
420J2, satin finish	Neon plastic, co-polymer over-mold	3.5 in.	7.6 in.	3 oz.

1008BL-P SEA HUNTER - BLUNT TIP



"Three sea bass in one minute 55 seconds in the first round (a full 21 seconds faster than Number Two), thanks to my Kershaw fillet knife."

—Captain Hook,
Dory Days Fillet Contest Winner



ACCESSORIES

ULTRA TEK SHARPENER 2535



STEEL	600-grit, diamond-coated, oval shaft
HANDLE	6061-T6 anodized aluminum
SHAFT	4 in.
OVERALL	9 in.
WEIGHT	2.1 oz.

TORX TOOL KIT TTOOL

HANDLE	Teflon coated aluminum
OVERALL	4 in.
WEIGHT	.7 oz.
INCLUDES	T-6 Torx, T-8 Torx, T-10 Torx



KERSHAW BELT BUCKLE BUCKLEKER



KERSHAW LANYARD LANYARDKERLOGOBLK/RED



FIRE STARTER 1019

SHAFT STEEL	Magnesium firesteel
STRIKER	Chrome-plated steel
HANDLE	Plastic
SHAFT	1.7 in.
STRIKER	2.75 in.
OVERALL	3.1 in.
WEIGHT	1.1 oz.

KERSHAW DECAL

2 in. x 1/2 in., clear background (DECALKERSM)
3 in. x 1 in., clear background (DECALKERLG)



KERSHAW PATCH PATCHKERLOGOBLK/RED

2.25 in. x 1 in.



KERSHAW BOTTLE OPENER BOTTLEOPENERKERBLK/RED



KERSHAW COFFEE MUG MUGKERLOGOBLACK

15 oz.



MUGKERLOGORED

KERSHAW WATER BOTTLE

24 oz.



H2OKERLOGOKTEXTURE

H2OKERBLACKWASH





ACCESSORIES

KERSHAW LOGO
MEN'S T-SHIRT

- M (TSHIRTMENSKERLOGOM)
- L (TSHIRTMENSKERLOGOL)
- XL (TSHIRTMENSKERLOGOXL)
- XXL (TSHIRTMENSKERLOGOXXL)



EMERSON-KERSHAW
MEN'S SHIRT

- M (TSHIRTMENSEMERSONBUILT M)
- L (TSHIRTMENSEMERSONBUILT L)
- XL (TSHIRTMENSEMERSONBUILT XL)
- XXL (TSHIRTMENSEMERSONBUILT XXL)



K-TEXTURE
MEN'S SHIRT

- M (TSHIRTMENSKERKTEXTURE M)
- L (TSHIRTMENSKERKTEXTURE L)
- XL (TSHIRTMENSKERKTEXTURE XL)
- XXL (TSHIRTMENSKERKTEXTURE XXL)



BLACKWASH
MEN'S T-SHIRT

- M (TSHIRTMENSKERBWM)
- L (TSHIRTMENSKERBWL)
- XL (TSHIRTMENSKERBWXL)
- XXL (TSHIRTMENSKERBWXXL)



BLACKWASH
WOMEN'S V-NECK SHIRT

- S (TSHIRTWOMANSKERBWS)
- M (TSHIRTWOMANSKERBWM)
- L (TSHIRTWOMANSKERBWL)
- XL (TSHIRTWOMANSKERBWXL)

KERSHAW CARRY
WOMEN'S SHIRT

- S (TSHIRTWOMANSKERCARRYS)
- M (TSHIRTWOMANSKERCARRY M)
- L (TSHIRTWOMANSKERBWL)
- XL (TSHIRTWOMANSKERBWXL)



KERSHAW
PULL-OVER
HOODIE

- S (HOODIEKERLOGOS)
- M (HOODIEKERLOGOM)
- L (HOODIEKERLOGOL)
- XL (HOODIEKERLOGOXL)
- XXL (HOODIEKERLOGOXXL)



EMERSON-KERSHAW
HOODIE

- S (HOODIEEMERSONBUILTS)
- M (HOODIEEMERSONBUILT M)
- L (HOODIEEMERSONBUILT L)
- XL (HOODIEEMERSONBUILT XL)
- XXL (HOODIEEMERSONBUILT XXL)

KERSHAW
FISHING HAT

- S/M (HATKERFISHINGS/M)
- L/XL (HATKERFISHING L/XL)



KERSHAW STRETCH-FIT HAT

- Black: S/M (HATKERSTRETCHFITBLKS/M), L/XL (HATKERSTRETCHFITBLK L/XL)
- Red: S/M (HATKERSTRETCHFITREDS/M), L/XL (HATKERSTRETCHFITRED L/XL)



ACCESSORIES



KERSHAW BEANIE
BEANIEKERLOGO



KERSHAW TRUCKER HAT
HATKERTRUCKER

Size adjustable



KERSHAW MILITARY HAT
HATKERMILLOGOBLK

Size adjustable



KERSHAW

BLADE STEELS

Kershaw chooses its blade steels based on a variety of criteria, from ability to hold an edge and corrosion resistance to strength, toughness, and value. Then each type of steel is matched to the function of the knife, the design of the blade, and angle to which it will be sharpened—among other knife maker’s considerations. As steel technology continues to evolve, Kershaw will continue to select the very best of these steels to become Kershaw knife blades.

Here’s a rundown on our most commonly used blade steels:

SANDVIK 14C28N

Developed in a partnership between Kershaw and Sandvik Steel. Kershaw worked with Sandvik Steel, one of the world’s leading manufacturers of stainless steel and special alloys, to produce this high-performance steel. Increased nitrogen in the formula enables 14C28N to provide both excellent corrosion resistance and the ability to be hardened to 58-60 Rockwell.

8Cr13MoV

8Cr13MoV is top Chinese steel that offers our customers an excellent value. It is similar to AUS8A, but with some differences in the steel formula. The key to blade performance with this steel is manufacturing quality. That’s where Kershaw’s expertise comes in. Kershaw precision heat-treats 8Cr13MoV steel to bring out its best high-performance characteristics: the ability to take and hold an edge, strength, and hardness. Blade Magazine columnist Farro opines, “I personally believe Kershaw has the best heat treatment to exploit 8Cr13MoV’s potential.” (Blade, January 2014)

D2

This “semi-stainless” tool steel is known for excellent wear resistance and good toughness.

420

Very stain resistant and tough, 420 is a somewhat “softer” steel. Kershaw uses this steel in handle liners rather than blades.

420J

Highly stain and wear resistant, but more ductile, this steel is excellent for use where “flex” is desirable, for example, fish fillet knives.

S30V

This all-around premium knife steel takes and holds an edge extremely well and is also extremely tough and wear resistant.

65 Mn

A tough, durable carbon steel that is designed for hard-use applications such as Kershaw’s Camp Series machetes.

3Cr13

A value-priced high-chromium stainless steel.

ABILITY TO TAKE AN EDGE

Some steels take a sharper edge than others. Fine-grained steels take an edge more easily than coarse-grained ones.

ABS INLAY

Acrylonitrile butadiene styrene (ABS) is a common thermoplastic. It combines strength and rigidity with the toughness of rubber. Inlaid in steel handles, it also offers non-slip grip characteristics.

ALLOY

A mixture of two or more metals in solution; the atoms of one replace or occupy spaces between the atoms of the other, so the materials are inextricably joined.

AMBIDEXTROUS

Able to use both left and right hands with equal ease. In relation to knives, it means that the knife is usable by both left and right-handers with equal ease.

ALUMINUM

Kershaw uses 6061-T6 aerospace aluminum to create some of our knife handles. Aluminum combines high strength with workability, corrosion resistance, and good acceptance of coatings.

ANODIZED ALUMINUM

Anodizing changes the microscopic texture of the surface of the aluminum, so a porous coating or film can be applied that will accept a dye. Anodizing makes aluminum stronger and anodic films are much longer lasting than other surface colorations. Anodized aluminum knife handles are highly scratch and fade resistant.

BELLY

The deeply convex-curved part of the blade, often found in skinning knives and multi-tasking knives.

BLACK OXIDE

A blade coating in which a chemical bath converts the surface of the steel to magnetite. Kershaw uses this coating on some blades and pocket clips, mainly for appearance, though it does add some corrosion resistance.

BOLSTER

The junction between the handle and the knife blade. A thick bolster can serve as a safety feature; it also contributes to knife balance.

CARBIDE

A hard material made of compacted carbon and heavy metals used to make metal-cutting tools. Kershaw uses a carbide tip as a glass-breaker in some of our rescue tools.

CARBON FIBER

A strong, lightweight weave of bonded carbon atoms. Kershaw occasionally uses it in handle scales; a premium material.

CHOIL

The start of the cutting edge. The choil is unsharpened and can be decoratively shaped.

CLIP-POINT BLADE

A blade shape in which the blade is clipped off at a straight or slightly curved concave angle to the point. Provides a thin, aggressive point, yet sheaths easily.

COMPUTER NUMERICAL CONTROLLED (CNC) MACHINING

Adds dimension to a knife blade or handle and enhances performance. CNC machines can be programmed to execute a precise series of machining operations that can result in the production of some of the complex components of a knife. Kershaw was one of the pioneers in mainstreaming the production of 3D-machined knives. We chose to use CNC machines because they give us the flexibility to create the complex part geometries that some of our knife designs require. CNC also gives us the ability to create just a few pieces for limited-run products or thousands of pieces for knives we produce in higher quantities.

CO-POLYMER

A polymer is a large molecule composed of repeating structural units and can be either synthetic or natural. A co-polymer is a compound of two or more different molecules, chosen for specific characteristics. The co-polymers Kershaw uses for knife handles generally have a slightly rubbery texture to improve grip security.

CORROSION RESISTANCE

The ability of steel to resist deterioration through reaction with elements in its surrounding environment.

DLC COATING

Diamond-Like Carbon coating; a coating that displays properties similar to those of natural diamond, including hardness, wear resistance, and reduced friction. Kershaw uses it to enhance the performance of knife blades and produce an attractive finish.

DROP FORGING

A process by which a knife blade is made by forcing hot steel into a metal die.

DROP-POINT BLADE

A very common blade style providing a strong, convenient point and easy sheathing; very common in hunting blades and work knives.

EDGE RETENTION

The ability of a steel to resist abrasion and wear, so the edge stays sharper longer.

ERGONOMICS

The design science of making products comfortable and efficient for human use.

FINE BLANKING

Manufacturing process that uses high-precision tools to fabricate a knife blade (or other part) to a shape very near to its final dimensions. Fine-blanked blades need little grinding or re-shaping.

FLIPPER

A flipper enables you to open a knife with your index finger. Apply pressure to the flipper and the knife opens quickly and easily. Flippers may be found on both manual and SpeedSafe® knives.

FULL-TANG KNIFE

A knife which is built of one solid piece of blade steel from tip to butt; scales are usually attached to form the handle.

G-10

An epoxy-filled woven glass fiber; it is extremely stable, unaffected by temperature changes, and can be decoratively tinted, ground, and polished. G-10 makes excellent handles and handle scales for knives.

GLASS-FILLED NYLON

Nylon synthetic polymer is reinforced with glass threads for increased strength, stiffness, and dimensional stability combined with excellent wear resistance.

HARDENABILITY

The ability of steel to be hardened by heat treatment.

HARDNESS

Like strength, hardness is a measure of resistance to deformation.

HEAT TREATMENT

A controlled heating and cooling process designed to improve the physical properties and characteristics of the steel. Tempering, annealing, and quenching are all forms of heat treatment.

IMPACT RESISTANCE

The ability of a material to resist cracking or breaking due to sudden impact.

Continued on next page >



INCLUSIONS

Non-metallic particles that can either form naturally during the steel-making process or can accidentally get into steel. These inclusions can affect the steel's quality; the fewer the inclusions, the cleaner and higher quality the steel.

INSET LINER LOCK

To build an inset liner lock, Kershaw insets a strip of steel inside a knife's handle, usually when the handle is G-10 or glass-filled nylon. Insetting the lock in this way enables us to create a slimmer knife, while still providing the strength and security of a locking liner.

JIMPING

Notches on the spine of a knife blade, or other places on a knife, designed to help prevent your hand from slipping during use.

K-TEXTURE™

An exclusive, rubberized texture and pattern used on the handle of certain Kershaw knives. K-Texture™ that provides an extremely secure grip.

LANYARD HOLE

A hole in the butt end of the knife to enable to user to attach a cord or lanyard.

LEFT/RIGHT-HAND CARRY
POCKETCLIP

The knife handles on some models are drilled for both left and right hand clip carry allowing the clip to be mounted on either side of the handle and thus ideal for both left- and right-handed knife users.

LOCK BACK

A pivoted latch connected to a spring and positioned on the back of a knife handle. It locks the blade open. To close the knife, depress the latch to release the blade.

LOCKING LINER

On a folding knife, the liners are the flat plates that support the handle sides, bolsters, spine, and blade pivot. In a locking liner, as the blade is opened, one of the liners moves behind the blade to hold it in the open position. This prevents the knife from accidentally closing. To close the knife, the locking liner must be pushed to the side and the blade folded back into the handle.

MICARTA®

An industrial laminate composed of layers of fiber embedded in a resin and subjected to heat and high-pressure to make the material extremely hard and dense; has industrial and decorative applications.

PMMA PLASTIC

Polymethyl methacrylate is strong and lightweight material, familiar to most people as acrylic glass. It has good impact strength and is highly versatile.

POM

Polyoxymethylene-Delrin. (POM) is a rigid, high-strength engineering plastic. It is often used in food applications as it offers extremely low moisture absorption, high-impact resistance, and is very easy to clean.

RECURVE BLADE

A blade with a concave curve off the choil that flows into a deep belly. A recurve blade is built for multi-tasking, offering minimal mass, and maximum performance. It provides leverage for tough cutting tasks and a precisely centered point for piercing.

ROCKWELL HARDNESS SCALE

A measurement of the hardness of a material based on the depth of penetration of a diamond cone pressed into the material at a constant pressure.

SAFETY TIP-LOCK

A small slider that locks the tip of the blade in the handle until the user releases it. It is available on a number of our SpeedSafe® models.

SCALES

The pieces of material that are fitted to the tang of a full-tang knife or to the liners of a folding knife. There are a wide variety of handle materials available from natural, such as wood and bone, to manmade, such as G-10.

SHEEPSFOOT/WHARNECLIFFE
BLADE

A blade with a fairly straight cutting edge with the spine rounded down to meet the point. It is a very strong design for bearing down on a cutting chore.

SPEARPOINT BLADE

A blade that is sharpened on both top and bottom and generally found in weapons.

SPEEDSAFE®

Kershaw's patented manual assisted-opening system; the user starts the blade out of the handle, then the SpeedSafe®. torsion bar takes over to fully open the knife.

STAIN RESISTANCE

The “stainless” in stainless steel; this is its ability to withstand rust.

STRENGTH

The ability to take a load without permanently deforming. When it comes to steel, strength is directly related to hardness. The harder the steel, the stronger it is.

SUB-FRAME LOCK

Kershaw uses the Sub-Frame Lock to create an extremely sturdy locking frame in our lightweight anodized aluminum or G-10 handles. This enables us to make a larger knife that is still light enough to carry every

day. One side of the handle is fitted with an inset plate of stainless steel. The stainless-steel plate is integral to the frame and is the part of the frame that moves into place behind the blade to secure it. Release the Sub-Frame Lock just as you would any other frame lock.

TANTO/MODIFIED TANTO BLADE

A blade with two edges: the bottom cutting edge and a shorter edge angled from the point. Good for punching and multi-purpose use. Knife makers modify the tanto blade in numerous ways for both style and function.

TEMPERING

The slow, steady heating of steel, followed by a slow cooling phase; this heating and cooling helps relieve stress in the steel to strengthen it.

TENSILE STRENGTH

The ability of steel to resist breakage by stretching.

TIP-UP/TIP-DOWN CARRY

This refers to the position in which a folding pocketknife is carried when clipped to the pocket: with the closed tip pointing up or down. Many Kershaw knives offer the ability to reverse the clip for either method of carry.

TITANIUM

A lightweight, corrosion-resistant metal with high tensile strength. Often used as handle materials, for liners, or as a blade coating, where it enhances performance.

TITANIUM CARBO-NITRIDE

Produces an attractive black or grey blade coating that increases the blade's hardness, helps maintain the edge, and increases the overall lifetime of the blade.

TITANIUM OXIDE

When oxygen is introduced into the PVD process, the result is Kershaw's spectacular “rainbow” finishes. The Rainbow Chive, Scallion, and Leek all feature this amazing multicolored finish. And like our other PVD coatings, it won't scratch off.

TOUGHNESS

The ability of the steel to withstand shock loading without damage; the opposite of brittleness. In a blade, higher toughness means less chipping or cracking. Toughness can be lost in very hard steel, although heat treatment can be used to improve toughness in a hard steel.

TRAC-TEC

A rough-surfaced insert that provides additional friction for a non-slip grip.

WEAR RESISTANCE

The ability of the steel to withstand abrasion.

LIMITED LIFETIME WARRANTY

Kershaw Knives products are backed by a Limited Lifetime Warranty against manufacturing defects. In addition to supporting our products with this warranty, we will be happy to sharpen your Kershaw knife for free when you send it in for warranty service. If you have questions about your warranty or how to take advantage of it, please check our website for more information.

Kershaw Knives carry a limited warranty for the lifetime of the original owner, except when stated otherwise. Our products are guaranteed to be free from defects in original material and construction and to perform as advertised when properly used and maintained. Under this warranty, Kai USA

Ltd. will repair or replace any product we find to be defective in its original material or construction. This Limited Lifetime Warranty is non-transferable and does not cover normal signs of wear, rust, or damage/breakage due to improper use or maintenance. To receive warranty repair or replacement, the owner

must send the product to be evaluated by Kai USA Warranty Services in our Tualatin, Oregon headquarters. In addition to the provisions of this warranty, you may also have other rights that can vary by state. No other warranties are implied or expressed other than what is specifically stated here.

Accidentally broke your Kershaw folder’s blade?

In most cases, we can replace current production blades for just \$10. Please see our website for complete details.



Kai USA Ltd.
18600 SW Teton Ave.
Tualatin, OR 97062

www.kershaw.kaiusalt.com/warranty

LIABILITY DISCLAIMER

Kershaw Knives are intended and sold for legitimate sporting and/or culinary purposes only. The purchase, use, and ownership of knives are subject to a wide variety of local laws and regulations. Due to the complexity and constantly changing nature of these laws and regulations, it is the responsibility of the buyer to investigate and comply with the laws and

regulations that apply in his or her specific area. You, and not Kai USA Ltd., are solely responsible for any claims resulting from violation of these laws and/or regulations. Any use of these products other than cutting is considered misuse and abuse. Kai USA Ltd. is not responsible for any injuries or damages caused by misuse and/or abuse.

WARNING!

Knives are extremely sharp tools and should only be used or handled with the utmost care and caution. Any use other than cutting is considered misuse and abuse—and will void your warranty. Kershaw Knives/Kai USA Ltd. is not responsible for any injuries resulting from misuse or abuse of the product.

BLADE INDEX

(by model number)

Model #	Model	Page	Model #	Model	Page	Model #	Model	Page	Model #	Model	Page
1006K	AMPHIBIAN	78	1600	CHIVE	42	1670RDBLKST	BLUR - RED/BLACK	41	3120	BLACK GULCH	57
1008	SEA HUNTER	79	1600BLK	CHIVE - BLACK	42	1670S30V	BLUR - S30V	40	3140	WILDCAT RIDGE	57
1008BL-P	SEA HUNTER - BLUNT TIP	79	1600PINK	CHIVE - PINK	43		STONEWASH		3410	CHILL	55
1018	CAMP AX	70	1600VIB	CHIVE - RAINBOW	42	1670TBLKST	BLUR - TANTO	40	3560	EMBER	11, 33
1073	SIEGE	12, 70	1605	CLASH	35		BLADE, BLACK		3650	VOLT II	36, 37
1074	CAMP 18	71	1605CKTST	CLASH - BLACK BLADE, SERRATED	35	1678	CAMBER	13, 35	3650CKTST	VOLT II - BLACK	36
1076	CAMP 14	71				1725CB	JUNKYARD DOG II	56	3655	VOLT II SS	37
1077	CAMP 10	71	1620C	SCALLION - REAL TREE	43	1730SS	ZING STAINLESS STEEL	37	3810	DIMENSION	32
1085	DISKIN HUNTER	66	1620FL	SCALLION - FRAME LOCK	44	1760	SKYLINE	56	3812	THISTLE	12, 54
	FIXED BLADE		1620FLST	SCALLION - FRAME LOCK, SERRATED	44	1780CB	RAKE	49	3820	INJECTION 3.0	55
1086	STROBE	13, 65	1620	SCALLION - BLACK	44	1830	OSO SWEET	34	3830	INJECTION 3.5	55
1098AK	ALASKAN BLADE TRADER	66	1620NB	SCALLION - NAVY BLUE	43	1835TBLKST	KURO - SERRATED	34	3840	FREEFALL	33
1120	TASKMASTER SHEARS	72	1620OL	SCALLION - OLIVE DRAB	43	1840	SHALLOT	48	3850	SWERVE	33
1241	CURVED (12")	14, 76	1620PUR	SCALLION - PURPLE	43	1840CKT	SHALLOT - BLACK	48	3870	AMPLITUDE	12, 30
1242GE	CURVED (9")	14, 76	1620RD	SCALLION - RED	43	1840CKTST	SHALLOT - BLACK, SERRATED	48	3880	THERMITE	39
1243SH	BONING WITH SPOON (7")	15, 76	1620ST	SCALLION - BLACK, SERRATED	44				3880BW	THERMITE BLACKWASH	18, 38
						1840ST	SHALLOT - SERRATED	48	3890	SCRAMBLER	38
1247	FILLET KNIFE (7 1/2")	15, 77	1620VIB	SCALLION - RAINBOW	44	1860	PISTON	50	3890BW	SCRAMBLER BLACKWASH	19, 38
1249	FILLET KNIFE (9 1/2")	15, 77	1660	LEEK	45	1870	KNOCKOUT	49			
1257	FILLET KNIFE (7")	78	1660BLKW	LEEK BLACKWASH	20, 45	1870OLBLK	KNOCKOUT OLIVE/BLACK	13, 49	4007	SECRET AGENT	12, 72
1258	FOLDING FILLET	15, 77	1660CB	LEEK - COMPOSITE BLADE	47	1894	LONEROCK ZIPIT PRO	65	4030TIKVT	NURA 3.0	11, 54
1259	FILLET KNIFE (9")	78				1895	LONEROCK SMALL	64	4035TIKVT	NURA 3.5	11, 54
1301BW	STARTER	13, 20, 51	1660CKT	LEEK - BLACK	45		FIXED BLADE		6014TBLK	CQC-3K	24
			1660CKTST	LEEK - BLACK, SERRATED	45	1896	LONEROCK LARGE	65	6024BLK	CQC-2K	24
1302BW	LIFTER	13, 21, 51	1660OL	LEEK - OLIVE DRAB	46		FIXED BLADE		6034	CQC-6K	25
1303BW	MANIFOLD	13, 21, 51	1660OR	LEEK - ORANGE	46	1898	LONEROCK FOLDING	64	6034T	CQC-7K	26
			1660PUR	LEEK - PURPLE	46		DROP POINT		6044TBLK	CQC-8K	26
1550	BLACKOUT	50	1660ST	LEEK - SERRATED	45	1898GH	LONEROCK FOLDING	64	6054BRNBLK	CQC-4K	25
1555BW	CRYO BLACKWASH	18, 30	1660SWBLK	LEEK - BLACK, STONE WASH	47		GUT HOOK		6074OLBLK	CQC-5K	25
1555G10	CRYO G-10	13, 31				1920	SELECT FIRE	60	6094BLK	CQC-1K	24
1555TBW	CRYO TANTO	18, 30	1660TEAL	LEEK - TEAL	12, 46	1980ST	RJ II - SERRATED	36	8000OL	FUNXION OUTDOOR	61
	BLACKWASH		1660VIB	LEEK - RAINBOW	47	1985ST	RJ I - SERRATED	36	8100GRYST	FUNXION EMT	2, 61
1555TI	CRYO	31	1670BLK	BLUR - BLACK	39	1990	BRAWLER	34	8200RD	FUNXION DIY	61
1556BW	CRYO II BLACKWASH	19, 32	1670BLK	BLUR - BLACK	39	2555	TASKMASTER SAW	70	8700	SHUFFLE	60
1556TBW	CRYO II TANTO	19, 32	1670BW	BLUR BLACKWASH	20, 39	3100	GRANT COUNTY	56	8700BLK	SHUFFLE - BLACK	12, 60
	BLACKWASH		1670DSBLK	BLUR - DESERT SAND/BLACK	41	3115	CORRAL CREEK	57	8700PINK	SHUFFLE - PINK	12, 60
						3115BT	CORRAL CREEK (SHEEPSFOOT BLADE)	57	8700SNOW	SHUFFLE - WHITE	12, 60
1556TI	CRYO II	31	1670GDBLKST	BLUR - GLASS BREAKER	40						
1560	WHIRLWIND	50	1670OLBLK	BLUR - OLIVE/BLACK	41						

BLADE INDEX

(by model name)

Model	Model #	Page	Model	Model #	Page	Model	Model #	Page	Model	Model #	Page
ALASKAN BLADE TRADER	1098AK	66	CQC-6K	6034	25	LEEK - BLACK, STONE WASH	1660SWBLK	47	SCALLION - OLIVE DRAB	1620OL	43
AMPHIBIAN	1006K	78	CQC-7K	6034T	26	LEEK - COMPOSITE BLADE	1660CB	47	SCALLION - PURPLE	1620PUR	43
AMPLITUDE	3870	12, 30	CQC-8K	6044TBLK	26	LEEK - OLIVE DRAB	1660OL	46	SCALLION - RAINBOW	1620VIB	44
BLACK GULCH	3120	57	CRYO	1555TI	31	LEEK - ORANGE	1660OR	46	SCALLION - REAL TREE	1620C	43
BLACKOUT	1550	50	CRYO BLACKWASH	1555BW	18, 30	LEEK - PURPLE	1660PUR	46	SCALLION - RED	1620RD	43
BLUR - BLACK	1670BLK	39	CRYO G-10	1555G10	13, 31	LEEK - RAINBOW	1660VIB	47	SCRAMBLER	3890	38
BLUR - DESERT SAND/BLACK	1670DSBLK	41	CRYO II	1556TI	31	LEEK - SERRATED	1660ST	45	SCRAMBLER BLACKWASH	3890BW	19, 38
BLUR - GLASS BREAKER	1670GDBLKST	40	CRYO II BLACKWASH	1556BW	19, 32	LEEK - TEAL	1660TEAL	12, 46	SEA HUNTER	1008	79
BLUR - OLIVE/BLACK	1670OLBLK	41	CRYO II TANTO	1556TBW	19, 32	LEEK BLACKWASH	1660BLKW	20, 45	SEA HUNTER - BLUNT TIP	1008BL-P	79
BLUR - RED/BLACK	1670RDBLKST	41	CRYO TANTO	1555TBW	18, 30	LIFTER	1302	13, 21, 51	SECRET AGENT	4007	12, 72
BLUR - S30V STONEWASH	1670S30V	40							SELECT FIRE	1920	60
BLUR - TANTO BLADE, BLACK	1670TBLKST	40	CURVED (12")	1241	14, 76	LONEROCK FOLDING	1898	64	SHALLOT	1840	48
BLUR BLACKWASH	1670BW	20, 39	CURVED (9")	1242GE	14, 76	DROP POINT			SHALLOT - BLACK	1840CKT	48
BONING WITH SPOON (7")	1243SH	15, 76	DIMENSION	3810	32	LONEROCK FOLDING	1898GH	64	SHALLOT - BLACK, SERRATED	1840CKTST	48
BRAWLER	1990	34	DISKIN HUNTER	1085	66	GUT HOOK			SHALLOT - SERRATED	1840ST	48
CAMP 10	1077	71	FIXED BLADE			LONEROCK LARGE	1896	65	SHUFFLE	8700	60
CAMP 14	1076	71	EMBER	3560	11, 33	FIXED BLADE			SHUFFLE - BLACK	8700BLK	12, 60
CAMP 18	1074	71	FILLET KNIFE (7 1/2")	1247	15, 77	LONEROCK SMALL	1895	64	SHUFFLE - PINK	8700PINK	12, 60
CAMP AX	1018	70	FILLET KNIFE (7")	1257	78	FIXED BLADE			SHUFFLE - WHITE	8700SNOW	12, 60
CHILL	3410	55	FILLET KNIFE (9 1/2")	1249	15, 77	LONEROCK ZIPIT PRO	1894	65	SIEGE	1073	12, 70
CHIVE	1600	42	FILLET KNIFE (9")	1259	78	MANIFOLD	1303BW	13, 21, 51	SKYLINE	1760	56
CHIVE - BLACK	1600BLK	42	FOLDING FILLET	1258	15, 77				STARTER	1301BW	13, 20, 51
CHIVE - PINK	1600PINK	43	FREEFALL	3840	33	NURA 3.0	4030TIKVT	11, 54			
CHIVE - RAINBOW	1600VIB	42	FUNXION DIY	8200RD	61	NURA 3.5	4035TIKVT	11, 54	STROBE	1086	13, 65
CLASH	1605	35	FUNXION EMT	8100GRYST	2, 61	OSO SWEET	1830	34	SWERVE	3850	33
CLASH - BLACK BLADE, SERRATED	1605CKTST	35	FUNXION OUTDOOR	8000OL	61	CAMBER	1678	13, 35	TASKMASTER SAW	2555	70
CORRAL CREEK	3115	57	GRANT COUNTY	3100	56	PISTON	1860	50	TASKMASTER SHEARS	1120	72
CORRAL CREEK (SHEEPSFOOT BLADE)	3115BT	57	INJECTION 3.0	3820	55	RAKE	1780CB	49	THERMITE	3880	39
			INJECTION 3.5	3830	55	RJ I - SERRATED	1985ST	36	THERMITE BLACKWASH	3880BW	18, 38
			JUNKYARD DOG II	1725CB	56	RJ II - SERRATED	1980ST	36	THISTLE	3812	12, 54
			KNOCKOUT	1870	49	SCALLION - BLACK	1620	44	VOLT II	3650	36, 37
			KNOCKOUT OLIVE/BLACK	1870OLBLK	13, 49	SCALLION - BLACK, SERRATED	1620ST	44	VOLT II - BLACK	3650CKTST	36
			KURO - SERRATED	1835TBLKST	34	SCALLION - FRAME LOCK	1620FL	44	VOLT II SS	3655	37
			LEEK	1660	45	SCALLION - FRAME LOCK, SERRATED	1620FLST	44	WHIRLWIND	1560	50
			LEEK - BLACK	1660CKT	45	SCALLION - NAVY BLUE	1620NB	43	WILDCAT RIDGE	3140	57
			LEEK - BLACK, SERRATED	1660CKTST	45				ZING STAINLESS STEEL	1730SS	37

Accessories can be found on pages 80-83. Shirts, hats, tools, stickers and much more!





kershaw KNIVES

Toll-Free (800) 325-2891
503-682-1966
Fax 503-682-7168

18600 SW Teton Ave.
Tualatin, OR 97062

KershawKnives.com



[Facebook.com/KershawKnives](https://www.facebook.com/KershawKnives)



[@KershawKnives](https://twitter.com/KershawKnives)



[@KershawKnives](https://www.instagram.com/KershawKnives)



[KershawOutdoor.tumblr.com](https://www.tumblr.com/KershawOutdoor)

Printed in the USA
LITCATKERDEALER2014

