



# kershaw

K N I V E S

2012 CATALOG





There's nothing like a Kershaw. From award-winning Kershaw technologies to the solid "thwack" of the blade lockup to those controversial pocketclips, when you're carrying a Kershaw, you know you're carrying the real thing. For design, innovation, quality, and genuine pride of ownership, Kershaw is the one.



Kai USA, Ltd., founded as Kershaw Knives in 1974, began with one mission: to design and manufacture tools that knife users would be proud to own, carry, and use. Today, premium materials, state-of-the-art manufacturing, extremely tight tolerances, and meticulous craftsmanship ensure that each Kershaw knife or tool provides a lifetime of performance and pride of ownership. The Kershaw brand is especially known for innovative technologies and materials, resulting in numerous industry awards. We manufacture most of our products in our 55,000 sq. ft. facility located south of Portland Oregon, in the city of Tualatin. Our campus houses a state-of-the-art manufacturing facility, our design, engineering, and manufacturing teams, as well as the customer service experts who sell and support our Kershaw brand knives and tools. Every Kershaw product is backed with a Limited Lifetime Warranty.

# 2012 CATALOG LEGEND

PG# MODEL/NAME

## NEW DESIGNS

- 6 Knockout 1870
- 6 Echelon 1880
- 7 Piston 1860
- 7 Black Blur, Glassbreaker 1670GBBLKST
- 7 Desert Sand Blur 1670DSBLK
- 7 Olive Drab Blur 1670OLBLK
- 8 Zing SS 1730SS
- 8 Volt SS 3655
- 8 Cryo 1555TI
- 9 Burst 1970
- 9 Brawler 1990
- 9 RJI 1985ST
- 9 RJI 1980ST
- 10 Black Clash 1605CKTST
- 10 Volt II 3650CKTST
- 10 Kuro 1835TBLKST
- 11 Funxion Outdoor 8000OL
- 11 Charcoal Funxion Outdoor 8000GRY
- 11 Funxion DIY 8200RD
- 11 Charcoal Funxion DIY 8200GRY
- 11 Funxion EMT 8100GRYST
- 12 3/4 Ton 1446
- 12 One Ton 1447
- 12 Kurai 3700
- 13 Black Vapor III 1655BLK
- 13 Taskmaster Saw 2555
- 13 Camp 10 1077
- 14 10 IN. Breaking Knife, Granton Edge 1280GE
- 14 8 IN. Breaking Knife 1288BK
- 14 8-1/2 IN. Spoon-Handle Fillet 1288SH
- 15 Diskin Hunter 1085
- 15 Mini Skinner 1081
- 15 Yellow Scallion 1620YL

## MANUAL

- 16 Speedform II 3550
- 16 Junkyard Dog II 1725CB
- 17 Skyline 1760
- 17 Chill 3410
- 17 G-10 Hawk 1530
- 18 Nerve 3420
- 18 Vapor III 1655
- 18 OD-2 1770

## SPEEDSAFE

- 19 Rake 1780CB
- 19 Turbulence 1790
- 20 Polished Chive 1600SS

- 20 Black Chive 1600BLK
- 20 Rainbow Chive 1600VIB
- 21 Chive 1600
- 21 Pink Chive 1600PINK
- 21 Scallion 1620
- 22 Scallion (Framelock) 1620FL
- 22 Blue Scallion 1620BL
- 22 Green Scallion 1620GRN
- 22 Red Scallion 1620RD
- 22 Pink Scallion 1620PINK
- 22 Rainbow Scallion 1620VIB
- 23 Shallot 1840
- 23 Black Shallot 1840CKT
- 23 Random Leek 1660TGRYST
- 23 Pink Leek 1660PINK
- 24 Rainbow Leek 1660VIB
- 24 Aluminum Leek 1660BB
- 24 Leek 1660
- 25 Black Leek 1660CKT
- 25 G-10 Leek 1660G10
- 25 Composite Leek 1660CB
- 30 Red Blur 1670RD
- 30 Black Blur 1670BLK
- 30 S30V Blur 1670S30V
- 30 Tanto Blur 1670TBLKST
- 31 Whirlwind 1560
- 31 Blackout 1550
- 31 Random Task II 1515
- 32 Needs Work 1820
- 32 Compound 1940
- 32 Asset 1930
- 33 Tremor 1950
- 33 Drone 1960
- 33 Clash 1605
- 34 Volt II 3650
- 34 Oso Sweet 1830

## WORK & DRESS

- 35 Ripcord 3200
- 35 Wildcat Ridge 3140
- 35 Black Gulch 3120
- 35 Corral Creek 3115
- 35 Corral Creek Sheepsfoot 3115BT
- 35 Grant County 3100
- 35 Silver Spur II 2825
- 35 Silver Spur 2800
- 36 Half-Ton 1445
- 36 Black Colt II 1045
- 36 Black Horse II 1060
- 37 Crown 3160

- 37 Select Fire 1920
- 37 Military Knife 4351
- 38 D.W.O. 3000
- 38 Red D.W.O. 3000RD

## OUTDOOR

- 38 Folding Field 1050
- 39 Camo Scallion 1620C
- 39 Field Knife 1082
- 39 Orange Field Knife 1082OR
- 39 Skinning Knife 1080
- 39 Orange Skinning Knife 1080OR
- 40 Camo Black Horse II 1060RT
- 40 Bear Hunter II 1029
- 40 Antelope Hunter II 1028
- 40 Orange Antelope Hunter II 1028OR
- 41 Roughneck 1010
- 41 RMEF Skinning Knife 1080ORRMEF
- 41 RMEF Wildcat Ridge 3140WRRMEF
- 41 RMEF Vapor III 1655RMEF
- 41 RMEF Volt II 3650RMEF
- 41 Zipit 2520
- 41 Orange Zipit 2520OR
- 42 Skeeter I 1210
- 42 Skeeter II 1215
- 42 9 IN. Fillet 1259
- 42 7-1/2 IN. Fillet 1257
- 42 Folding Fillet 1256
- 43 Amphibian 1006K
- 43 Sea Hunter 1008
- 43 Sea Hunter (Blunt-Tip) 1008BL-P
- 44 Alaskan Blade Trader 1098AK
- 44 Hunter's Blade Trader 1094HBT
- 44 Sportsman's Blade Trader 1095SBT
- 45 Fisherman's Blade Trader 1096FBT
- 45 Camp-Tool Blade Trader 1091CT
- 45 Deluxe Blade Trader 1099DBT
- 46 Fire Starter 1019
- 46 Camp Ax 1018
- 46 Taskmaster Shears 1120
- 47 Key Chain T-Tool T TOOL
- 47 Ultra-Tek Sharpener 2535
- 47 Knife Storage Bag Z997
- 48 Pro-Grade Series
- 49 Kitchen Cutlery 9900 Series
- 50 9900 Block Set 9900-7
- 50 Steak Knife Set 9922-7
- 50 Cutting Board Set CB-3



# GOT QUESTIONS? GET ANSWERS.

## WHAT DO THE NEW PACKAGE ICONS MEAN?

Last year, we introduced new clampacks that include a series of “feature icons.” They make it easier for you and your customers to identify the specific features of each Kershaw knife at a glance. Here’s a guide for decoding the icons on the new packaging and in this catalog:

### OPENING SYSTEM



SPEEDSAFE



FLIPPER



MANUAL

Note: some knives may have both SpeedSafe and flipper icons

### LOCK TYPE



INSET LINER LOCK



SUB-FRAME LOCK



FRAME LOCK



LINER LOCK



LOCK BACK



PUSH BUTTON

### BLADE TYPE



FIXED



MULTI-FUNCTION



BLADE TRADER



COMPOSITE BLADE

### POCKETCLIPS



SINGLE POSITION



TIP-UP OR TIP-DOWN



QUAD-CARRY



TRI-CARRY

### SERRATIONS



2-STEP SERRATION



SCALLOP SERRATION

When you see these icons, the knife either has serrations or is available with serrations.

### SHEATH



GIFT TIN



SHEATH



BLADE GUARD

Includes sheath, blade guard, or other storage system

## WHAT DOES THE “X” MEAN IN A KERSHAW MODEL NUMBER?

When you see an “X” after the model number of a Kershaw knife on your order—for example, 1660X—it means that the knife is in a clampack rather than a closed box. Our new Natralock® clampack packaging uses much less plastic than previous clampacks, which your customers will like, while still providing the tamper-proof security that you’ll like. There is absolutely no difference in the knives themselves. The only difference is the type of packaging.

Many Kershaw models are available in your choice of Natralock clampack or box; others are only available in one packaging style. Please call for availability for specific model numbers.

On the other hand, if you see “XXXX” marked on the actual blade of the knife, it means that the knife is a factory second and was probably purchased at our annual Warehouse Sale. Usually, these knives are just fine and most people can’t tell the difference in performance. It’s just that they have not passed our rigorous inspection process and are not covered by our warranty.

## WHY DO YOU “RESERVE THE RIGHT TO CHANGE SPECIFICATIONS?”

“We reserve the right to change specifications or materials at any time, without notice.” You’ll see this notice on Kershaw packaging, catalogs, and product literature. The reason we reserve this right is that from prototype to final production, there can be changes either in the final production design of the knife and/or in the availability of any given material at any given time. For example, if we run into supply issues with the steel we originally specified for a new knife, we may substitute another, more readily available steel. Nevertheless, the new material will always offer similar characteristics and performance to the original spec. Specifications might also change if we move the production location. For example, knives made with 14C28N blade steel in the US will be made with high-performance 8Cr13MoV in China. But no matter where they’re made, all Kershaw knives must meet our high standards for quality, fit and finish, and function.

## WHY DOES IT TAKE SO LONG TO GET THE KNIFE WHEN I’VE ALREADY SEEN THE PROTOTYPE?

A prototype is far from being a knife that’s ready for production. On pages 24-27 of this catalog, we take you through the whole process—from concept to shelves. You’ll discover exactly what goes into making a Kershaw knife.







## NEW DESIGNS. NEW TECH.

In this section, you'll discover innovative new designs and high-performance blade shapes and grinds. Some knives feature our secure, new Sub-Frame® lock or Inset Liner Lock. And there's a selection of both manual and assisted openers. We've also been listening to our customers; we heard you about the pocketclips. So we're happy to preview a selection of knives with our new deep-carry pocketclip for secure, nearly invisible pocket carry. And of course, all this exciting new knives are built to Kershaw's standards for precision fit, finish, and function. With that, here's a look at the new Kershaw lineup for 2012.

### 1860 PISTON

**STEEL** SANDVIK 14C28N, STONEWASHED FINISH  
**HANDLE** TEXTURED G-10  
**BLADE** 3-1/2 IN.  
**CLOSED** 5 IN.



Unique cuts on the handle and blade give the new Piston a great look. While the Piston is a larger knife, its lightweight G-10 handles make it light enough for everyday carry. The Piston features our Inset Liner Lock, quad-carry options, and a hidden lanyard loop in the handle interior.



6

### 1870 KNOCKOUT

**STEEL** SANDVIK 14C28N, STONEWASHED FINISH  
**HANDLE** TEXTURED G-10  
**BLADE** 3-1/4 IN.  
**CLOSED** 4-5/8 IN.



The Knockout looks great, but the reason it bears this name is that we've "knocked out" a piece of the textured G-10 handle and inset a stainless-steel plate to create the Sub-Frame® Lock—and a knife that's lightweight, yet strong.



### 1670GBBLKST BLACK BLUR GLASSBREAKER

**STEEL** SANDVIK 14C28N, DLC COATING  
**HANDLE** 6061-T6 ANODIZED ALUMINUM, TRAC-TEC INSERTS  
**BLADE** 3-3/8 IN.  
**CLOSED** 4-1/2 IN.  
**WEIGHT** 4.0 OZ.



Now the Black Blur has the added functionality of a carbide glassbreaker tip built into the handle. Add that to the Blur's sure-grip, contoured handle and recurved blade with partial serration, and you've got a truly versatile knife, ready to handle just about anything.



7



### 1880 ECHELON

**STEEL** SANDVIK 14C28N, SATIN FINISH  
**HANDLE** MACHINED TRANSLUCENT G-10  
**BLADE** 3-1/4 IN.  
**CLOSED** 4 IN.



Get great looks and solid performance. The natural G-10 handle is semi-transparent so you can see the SpeedSafe assisted opening mechanism on the inside. Includes our new reversible deep-carry pocketclip.



### 16700LBK+1670DSBLK BLURS

**STEEL** SANDVIK 14C28N, DLC COATING  
**HANDLE** 6061-T6 ANODIZED ALUMINUM, TRAC-TEC INSERTS  
**BLADE** 3-3/8 IN.  
**CLOSED** 4-1/2 IN.  
**WEIGHT** 4.0 OZ.



**DESERT SAND BLUR** 1670DSBLK  
**OLIVE DRAB BLUR** 16700LBK

Get a grip on one of our toughest, most versatile knives—now in olive drab or desert tan. The Blur's slightly recurved blade is ideal for slicing, slashing, or pulling cuts. This multi-task-ready blade is paired with a lightweight anodized aluminum handle and Trac-Tec inserts for a secure grip, even in slippery conditions.







## 1730SS ZING SS

**STEEL** 8CR13MOV, BEAD-BLASTED FINISH  
**HANDLE** 410, BEAD-BLASTED FINISH  
**BLADE** 3 IN.  
**CLOSED** 3-7/8 IN.  
**WEIGHT** 3.0 OZ.



Get the Zing of pure steel—now with SpeedSafe. With its unique design and pocket-perfect size, the Zing is one of our most popular knives. Now we're taking it to a new level with the Zing SS. It's larger, yet slimmer and offers the security of a frame lock. Designed by RJ Martin.

## 1970 BURST

**STEEL** 8CR13MOV, STONEWASHED FINISH  
**HANDLE** GLASS-FILLED NYLON SCALES  
**BLADE** 3 IN.  
**CLOSED** 4-1/8 IN.



### SERRATED 1970ST

The aggressive, spiked look of the Burst is sure to draw the eye and plenty of positive comments. And check out that flipper. We've directed the blade grind all the way down the flipper for a sweeping line and an awesome look.



## 3655 VOLT SS

**STEEL** 8CR13MOV, BEAD-BLASTED FINISH  
**HANDLE** 410, BEAD-BLASTED FINISH  
**BLADE** 3 7/16 IN.  
**CLOSED** 4 1/4 IN.



High voltage looks and a slimmer profile. The Volt SS picks up where the Volt II left off—and gets even better. While it's larger than the original, it's slimmer, features a solid frame lock, and is all stainless steel from tip to butt. Designed by RJ Martin.

## 1990 BRAWLER

**STEEL** 8CR13MOV, BLACK OXIDE COATING  
**HANDLE** GLASS-FILLED NYLON  
**BLADE** 3-1/4 IN.  
**CLOSED** 4-1/8 IN.



Get great style and great function in a value-priced knife with the Kershaw Brawler. In addition to amazing looks, the Brawler offers SpeedSafe, a modified tanto blade with an extra-thick tip, light weight, and quad-carry options.



## 1555TI CRYO

**STEEL** 8CR13MOV, TITANIUM CARBO-NITRIDE COATING  
**HANDLE** 8CR13MOV, TITANIUM CARBO-NITRIDE COATING  
**BLADE** 2-3/4 IN.  
**CLOSED** 3-3/4 IN.



This is a classic Rick Hinderer design, but built in pure steel with matte grey titanium carbo-nitride coating on both blade and handle. Opens quickly with flipper or thumbstud opening; sturdy framelock with lockbar stabilization.

## 1985TI RJI

**STEEL** 8CR13MOV, TITANIUM CARBO-NITRIDE COATING  
**HANDLE** MACHINED G-10  
**BLADE** 3-1/2 IN.  
**CLOSED** 4-5/8 IN.



### RJI 1980ST

**BLADE** 3-1/8 IN.  
**CLOSED** 4 IN.

Designed by RJ Martin, the RJI's blade design and grind provides a slightly curved belly with plenty of slicing power, plus a flat-ground tanto tip that's significantly thicker than comparable tantos so you can take on piercing tasks with no fear.







## 1605CKTST BLACK CLASH

**STEEL** 8CR13MOV, BLACK OXIDE COATING  
**HANDLE** GLASS-FILLED NYLON  
**BLADE** 3 IN.  
**CLOSED** 4-1/4 IN.  
**WEIGHT** 4 OZ.



A drop-point blade with just a little recurve enables this multipurpose knife to excel at a wide variety of tasks, from slicing to rope cutting. Handsome black DLC blade coating and black scales make it rock extra hard.

## 80000L FUNXION OUTDOOR

**STEEL** 8CR13MOV, SATIN FINISH  
**HANDLE** ALUMINUM, RUBBER INSERT  
**BLADE** 3 IN.  
**CLOSED** 4-1/4 IN.



### CHARCOAL FUNXION OUTDOOR 8000GRY

The Funxion Outdoor provides a screwdriver, hex wrench, and a cap lifter; the swing-out carabiner-style clip attaches easily to belt or pack, and the new Kershaw deep-carry pocketclip enables secure and discreet pocket carry. The blade and the tools each have a separate locking liner for safety.



## 3650CKTST VOLT II

**STEEL** 8CR13MOV, BLACK OXIDE COATING  
**HANDLE** GLASS-FILLED NYLON  
**BLADE** 3 1/8 IN.  
**CLOSED** 3-7/8 IN.  
**WEIGHT** 3.4 OZ.



You asked for it, you've got it. Now the same versatile blade and handle style as the original Volt is available in sleek black from the tip of the blade to the butt of the handle.

## 8200RD FUNXION DIY

**STEEL** 8CR13MOV, SATIN FINISH  
**HANDLE** ALUMINUM, RUBBER INSERT  
**BLADE** 3 IN.  
**CLOSED** 4-1/4 IN.



### CHARCOAL FUNXION DIY 8200GRY

In addition to a SpeedSafe® assisted knife blade, the Funxion DIY provides a selection of handy tools perfect for taking on all those around-the-house tasks. It includes a screwdriver tip, hex wrench, carabiner clip, and—very important—a bottlecap lifter. A separate locking liner for the blade and the tools ensures safety.



## 1835TBLKST KURO

**STEEL** 8CR13MOV, BLACK OXIDE COATING  
**HANDLE** GLASS-FILLED NYLON  
**BLADE** 3-1/8 IN.  
**HANDLE** 4-1/8 IN.



A modified tanto blade with partial serration is paired with textured, glass-filled nylon scales in this all-black beauty. Access the SpeedSafe assisted opening quickly and easily with an ambidextrous flipper. Drilled to accept a lanyard. An impressive look at a value price.

## 8100GRYST FUNXION EMT

**STEEL** 8CR13MOV, BLACK OXIDE COATING  
**HANDLE** ALUMINUM, RUBBER INSERT  
**BLADE** 3 IN.  
**CLOSED** 4-1/4 IN.



In addition to a modified tanto blade with partial serration, the Funxion EMT features a cord cutter, hex wrench, and carabiner clip. An aluminum handle lightens the tool's weight, a separate locking liner for the blade and for the tools ensures safety.







## 1446 3/4 TON

**STEEL** 8CR13MOV, BEAD-BLASTED FINISH  
**HANDLE** GLASS-FILLED NYLON, NON-SLIP INSERT  
**BLADE** 2-3/4 IN.  
**CLOSED** 3-7/8 IN.



Bigger than our popular Half Ton, more compact than our larger One Ton; you guessed it, it's the 3/4 Ton and it's the perfect work knife for the guy who wants a knife that's just the right size—in classic black.

## 1655BLK BLACK VAPOR III

**STEEL** 8CR13MOV, BLACK OXIDE COATING  
**HANDLE** 410, BLACK OXIDE COATING  
**BLADE** 3-1/2 IN.  
**CLOSED** 4-5/8 IN.  
**WEIGHT** 4.2 OZ.



### SERRATED 1655BLKST

Some people just prefer the dark—so Kershaw made an all-black version of our popular Vapor III. It has the same all-stainless-steel construction as the silver Vapor III, but with matte black coating.



## 1447 ONE TON

**STEEL** 8CR13MOV, BEAD-BLASTED FINISH  
**HANDLE** MACHINED G-10 FRONT, 410 BACK  
**BLADE** 3-1/2 IN.  
**CLOSED** 4-5/8 IN.



If you like the Half-Ton, but need a bigger knife, then the new One-Ton is your knife. It has a wide, fat blade, a machined G-10 front scale and a 410 stainless back.

## 2555 TASKMASTER SAW

**STEEL** HIGH-CARBON STEEL, POWDERCOAT  
**HANDLE** GLASS-FILLED NYLON, RUBBER OVERMOLD  
**BLADE** 7 IN.  
**CLOSED** 9-1/4 IN.



Extremely handy, extremely powerful—and won't take up a lot of room in your gear. Great for camping or hunting trips, and perfect for around-the-yard pruning, too. Also features a push-button locking mechanism.



## 3700 KURAI

**STEEL** 8CR13MOV, TITANIUM CARBO-NITRIDE COATING  
**HANDLE** CARBON FIBER, ALUMINUM  
**BLADE** 2-1/2 IN.  
**CLOSED** 3-1/2 IN.



This awesome little pocketknife has enough style to be a gentleman's dress knife—yet it's tough and versatile enough to carry everyday. A drop-point blade with titanium carbo-nitride coating provides the versatility; carbon fiber and aluminum scales provide the style.

## 1077 CAMP 10

**STEEL** CARBON STEEL, POWDERCOAT  
**HANDLE** FULL TANG, RUBBER OVERMOLD  
**BLADE** 10 IN.  
**OVERALL** 16 IN.



Our newest camp knife is the right tool for every campsite chore—from clearing brush to making kindling. And, of course, zombies don't stand a chance against this big 10-inch blade with non-reflective powdercoat.







1280GE  
**10-IN.  
BREAKING KNIFE,  
GRANTON EDGE**

**STEEL** 420J2, BRUSHED FINISH  
**HANDLE** POLYPROPYLENE  
**BLADE** 10 IN.  
**OVERALL** 15-3/4 IN.



The granton edge creates small air pockets between the knife and the fish, making it easier to glide through your breakdown task quickly and easily. The 10-inch blade size is right for medium-to-large fish and game.

1085  
**DISKIN HUNTER**

**STEEL** SANDVIK 14C28N, STONEWASHED FINISH  
**HANDLE** TEXTURED G-10 SCALES  
**BLADE** 4-5/8 IN.  
**OVERALL** 9-1/2 IN.



Designed by custom knifemaker, Matt Diskin, this is a big, bold fixed-blade knife with a slim, comfortable handle. We built the Diskin Hunter from extra thick, extra strong blade stock. Part of the American-Made Hunters series. Includes sheath.



1288BK  
**8-IN.  
BREAKING KNIFE**

**STEEL** 420J2, BRUSHED FINISH  
**HANDLE** POLYPROPYLENE  
**BLADE** 8 IN.  
**OVERALL** 13-1/4 IN.



This is a new addition to Kershaw's successful Pro-Grade Specialty Fish & Game Knives series. Smaller than our 10-inch Breaking Knife, this one is built to handle somewhat smaller fish and game and is a convenient size some users prefer.

1081  
**MINI SKINNER**

**STEEL** SANDVIK 14C28N, STONEWASHED FINISH  
**HANDLE** TEXTURED G-10 SCALES  
**BLADE** 2 IN.  
**OVERALL** 4-3/4 IN.



Good things come in small sheaths, too. Another new addition to Kershaw's American-Made Hunters series is the Mini Skinner. Shaped like our popular Skinning Knife, the Mini Skinner offers a 2-in. blade that's ideal for smaller game. Includes sheath.



1288SH  
**8-1/2 IN.  
SPOON-HANDLE  
FILLET**

**STEEL** 420J2, BRUSHED FINISH  
**HANDLE** POLYPROPYLENE  
**BLADE** 8-1/2 IN.  
**OVERALL** 16 IN.



In our continuing quest to provide exactly the right knife for every job, we're pleased to add this larger spoon-handled knife to the Pro-Grade Specialty Fish & Game series. Almost twice as long as our previous spoon-handled knife, this one makes it easier to clean and fillet even larger fish.

1620YL  
**YELLOW  
SCALLION**

**STEEL** 420HC, BEAD-BLASTED FINISH  
**HANDLE** GLASS-FILLED NYLON  
**LINER** 410  
**BLADE** 2-1/4 IN.  
**CLOSED** 3-1/2 IN.  
**WEIGHT** 2.3 OZ.



Bright yellow joins the Kershaw Scallion family of colorful handle scales. This one is in durable glass-filled nylon with a sure-grip texture. Tip-Lock for added safety.







## PURE KNIFE. NO MECHANICAL ASSIST.

With Kershaw's precision manufacturing, these manual folders open smoothly and easily—even without a boost. Some accomplish that with a built-in flipper. For others, it's a handy thumbstud. Yet others give you maximum versatility and feature both.

## TO FLIP A FLIPPER

You have two options. One: with your index finger, push down very strongly on the flipper to propel the blade out of the handle. Two: push down strongly, while at the same time rotating or "flipping" your wrist slightly.

## 1760 SKYLINE

**BLADE** SANDVIK 14C28N, BEAD-BLASTED FINISH  
**HANDLE** TEXTURED G-10  
**BLADE** 3-1/8 IN.  
**CLOSED** 4-1/4 IN.  
**WEIGHT** 2.3 OZ.



The Skyline rates high on knife blogger and reviewer lists of best buys and favorites. And no wonder. It's lightweight, versatile, and a lot of knife in a well-priced package.



16



## 3550 SPEEDFORM II

**STEEL** ELMAX®, SATIN FINISHED  
**HANDLE** 3-D MACHINED G-10  
**BLADE** 3-1/4 IN.  
**CLOSED** 4-1/8 IN.  
**WEIGHT** 3.2 OZ.



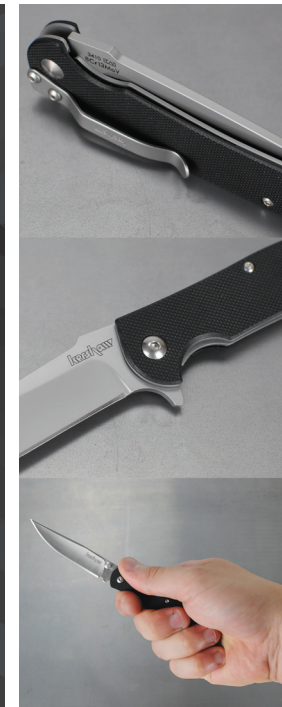
The next-generation Speedform II boasts an ELMAX® blade of high chromium-vanadium-molybdenum steel that's incredibly clean, hard, and strong—plus the original, award-winning Speedform profile.

## 3410 CHILL

**BLADE** 8CR13MOV, BEAD-BLASTED FINISH  
**HANDLE** CNC-MACHINED G-10  
**BLADE** 3-1/8 IN.  
**CLOSED** 3-7/8 IN.  
**WEIGHT** 2.0 OZ.



The Chill gentleman's folder offers clean lines and cool performance. Designed by RJ Martin. Opens easily with a built-in flipper.



17



## 1725CB JUNKYARD DOG II

**STEEL** SANDVIK 14C28N/D2 COMPOSITE, BEAD-BLASTED FINISH  
**HANDLE** TEXTURED G-10  
**LINER** 410  
**BLADE** 3-3/4 IN.  
**CLOSED** 4-7/8 IN.  
**WEIGHT** 5.2 OZ.



Junkyard Dog style with the added cool of a Composite Blade. Tough, wear resistant D2 is on the cutting edge, high-performance 14C28N is on the spine. New sawtooth Composite Blade joint! Pouch included.

## 1530 G-10 HAWK

**STEEL** 8CR13MOV, SATIN FINISH  
**HANDLE** TEXTURED G-10  
**BLADE** 3-1/8 IN.  
**CLOSED** 3-7/8 IN.  
**WEIGHT** 1.8 OZ.



This slim, sleek gentleman's knife is both lightweight and good looking. So there's no reason for a gentleman to ever be without a blade.







## 3420 NERVE

**STEEL** 8CR13MOV, BEAD-BLASTED FINISH  
**HANDLE** CNC-MACHINED G-10  
**BLADE** 3-1/8 IN.  
**CLOSED** 4-3/8 IN.  
**WEIGHT** 3.8 OZ.



Designed by RJ Martin, the Nerve is a lot of knife for a little money. CNC 3D-machined handle plus heavy jimping offers a super-secure grip.



## EASY, ONE-HANDED OPENING

SpeedSafe® is the patented, assisted opening mechanism pioneered by Kershaw that makes it fast and easy to open a knife one-handed. SpeedSafe also makes it possible for Kershaw to ensure that even a large blade can move out of the handle just as smoothly and easily as a smaller one. Plus, many of our assisted folders are ambidextrous—and open with a flipper or a thumbstud on both sides of the blade—so they're just as easy to use left-handed or right. To open a SpeedSafe knife, the user must apply manual pressure to overcome the resistance of the torsion bar. This means that SpeedSafe knives do not meet the definition of a switchblade; they do not deploy with the push of a button or by gravity alone. Once open, the blade locks safely into position until the user releases it.



## 1655 VAPOR III

**STEEL** 8CR13MOV, BEAD-BLASTED FINISH  
**HANDLE** 410, BEAD-BLASTED FINISH  
**BLADE** 3-1/2 IN.  
**CLOSED** 4-5/8 IN.  
**WEIGHT** 4.2 OZ.



### SERRATED 1655ST

The newest iteration of the Vapor combines industrial good looks with super-smooth, one-handed manual opening in a simple knife that simply works well.

## 1780CB RAKE

**STEEL** D2/14C28N, BEAD-BLASTED FINISH  
**HANDLE** TEXTURED G-10  
**BLADE** 3-1/2 IN.  
**CLOSED** 4-5/8 IN.  
**WEIGHT** 4.8 OZ.



The Rake's Composite Blade has tough, wear-resistant D2 steel on the cutting edge and high-performance Sandvik 14C28N on the spine. The extra-wide blade with its curved belly provides ample slicing and slashing capability. A clipped point preserves piercing power. Designed by Tim Galyean.



## 1770 OD-2

**STEEL** 8CR13MOV, BEAD-BLASTED FINISH  
**HANDLE** GLASS FILLED NYLON  
**LINER** 410  
**BLADE** 2-1/4 IN.  
**CLOSED** 3-1/8 IN.  
**WEIGHT** 1.4 OZ.



The OD-2 offers the same look and concealed flipper mechanism as the OD-1, but this "Over-Drive" is larger—and available at a value price. Like the original, the flipper is a slim lever that folds into a recess in the liner when the blade is open to give the OD-2 a sleek, smooth line all the way down. Designed by Lee Williams.

## 1790 TURBULENCE

**STEEL** SANDVIK 14C28N, STONED WASHED FINISH  
**HANDLE** TEXTURED G-10  
**BLADE** 3-1/4 IN.  
**CLOSED** 4-1/2 IN.  
**WEIGHT** 4.4 OZ.



Designed by Tim Galyean, the Turbulence offers modified tactical styling and an ergonomic grip in a convenient size.







## 1600SS POLISHED CHIVE

**STEEL** 420HC, MIRROR POLISH FINISH  
**HANDLE** 410, MIRROR POLISH FINISH  
**BLADE** 1-15/16 IN.  
**CLOSED** 2-7/8 IN.  
**WEIGHT** 1.9 OZ.



Polished, petite, and perfect. The Polished Chive is all stainless steel, polished to a brilliant mirror finish. Tip-Lock for added safety. Includes gift tin

## 1600 CHIVE

**STEEL** 420HC, BEAD-BLASTED FINISH  
**HANDLE** 410, BEAD-BLASTED FINISH  
**BLADE** 1-15/16 IN.  
**CLOSED** 2-7/8 IN.  
**WEIGHT** 1.9 OZ.



Pure stainless steel with an attractive bead-blasted finish. Tip-Lock for added safety



## 1600BLK BLACK CHIVE

**STEEL** 420HC, POLISHED DLC COATING  
**HANDLE** 410, POLISHED DLC COATING  
**BLADE** 1-15/16 IN.  
**CLOSED** 2-7/8 IN.  
**WEIGHT** 1.9 OZ.



Black DLC coated for a sophisticated look in a small pocketknife. Tip-Lock for added safety. Includes gift tin. 2005 Blade Show winner for Most Innovative American Design.

## 1600PINK PINK CHIVE

**STEEL** 420HC, BEAD-BLASTED FINISH  
**HANDLE** 6061-T6 ANODIZED ALUMINUM  
**BLADE** 1-15/16 IN.  
**CLOSED** 2-7/8 IN.  
**WEIGHT** 1.9 OZ.



Pretty in pink. This small knife is a pocket- or purse-perfect companion for everyday carry. Tip-Lock for added safety.



## 1600VIB RAINBOW CHIVE

**STEEL** 420HC, TITANIUM-OXIDE RAINBOW COATING  
**HANDLE** 410, TITANIUM-OXIDE RAINBOW COATING  
**BLADE** 1-15/16 IN.  
**CLOSED** 2-7/8 IN.  
**WEIGHT** 1.9 OZ.



Titanium-oxide rainbow coating makes this the most eye-catching small knife ever. Tip-Lock for added safety. Includes gift tin.

## 1620 SCALLION

**STEEL** 420HC, BEAD-BLASTED FINISH  
**HANDLE** GLASS-FILLED NYLON  
**LINER** 410  
**BLADE** 2-1/4 IN.  
**CLOSED** 3-1/2 IN.  
**WEIGHT** 2.3 OZ.



### SERRATED 1620ST

The Scallion is one step up in size from the Chive—for those who want a little more knife, but not too much. Perfect for everyday carry and cuts way down on the intimidation factor. Tip-Lock for added safety.







## 1620FL SCALLION

**STEEL** 420HC, BEAD-BLASTED FINISH  
**HANDLE** 410, BEAD-BLASTED FINISH  
**BLADE** 2-1/4 IN.  
**CLOSED** 3-1/2 IN.  
**WEIGHT** 2.3 OZ.



### SERRATED 1620FLST

This Scallion is pure stainless steel with a super-secure framelock. Tip-Lock for added safety, too.

## 1840 SHALLOT

**STEEL** SANDVIK 14C28N, BEAD-BLASTED FINISH  
**HANDLE** 410  
**BLADE** 3-1/2 IN.  
**CLOSED** 4-3/8 IN.  
**WEIGHT** 4.2 OZ.



**SERRATED 1840ST**  
**BLACK SHALLOT 1840CKT/1840CKST (SERRATED)**  
**STEEL** SANDVIK 14C28N, DLC COATING  
**HANDLE** 410, DLC COATING

The largest of Kershaw's "Onion-themed" SpeedSafe knives, the Shallot offers a 3 1/2-inch blade and an ergonomically curved handle. Choose silver or black, smooth or partially serrated edge.



## 1620 COLORED SCALLIONS

**STEEL** 420HC, BEAD-BLASTED FINISH  
**HANDLE** 6061-T6 ANODIZED ALUMINUM  
**BLADE** 2-1/4 IN.  
**CLOSED** 3-1/2 IN.  
**WEIGHT** 2.3 OZ.



**BLUE SCALLION 1620BL**  
**GREEN SCALLION 1620GRN**  
**RED SCALLION 1620RD**  
**PINK SCALLION 1620PINK**

Choose your color. This Scallion comes with anodized aluminum scales in four eye-catching, scratch-resistant colors. Tip-Lock for added safety.

## 1660TGRYST RANDOM LEEK

**STEEL** S30V, PVD COATING  
**HANDLE** 410, PVD COATING  
**BLADE** 3 IN.  
**CLOSED** 4 IN.  
**WEIGHT** 3.0 OZ.



For quality and value, the Random Leek is not a random choice. The blade is made of super-tough, corrosion resistant S30V with a matte DLC coating. Partial serration provides additional cutting versatility. Stainless steel handles with the same DLC coating and a sturdy frame lock completes the picture.



## 1620VIB RAINBOW SCALLION

**STEEL** 420HC, TITANIUM-OXIDE RAINBOW COATING  
**HANDLE** 410, TITANIUM-OXIDE RAINBOW COATING  
**BLADE** 2-1/4 IN.  
**CLOSED** 3-1/2 IN.  
**WEIGHT** 2.3 OZ.



If one color just isn't enough, try the Rainbow Scallion and get them all. The secret to this rainbow colors is in the scratch-resistant titanium-oxide coating. Tip-Lock for added safety. Includes zippered case.

## 1660PINK PINK LEEK

**STEEL** SANDVIK 14C28N, BEAD-BLASTED FINISH  
**HANDLE** 6061-T6 ANODIZED ALUMINUM  
**BLADE** 3 IN.  
**CLOSED** 4 IN.  
**WEIGHT** 2.4 OZ.



These lightweight aluminum handles stay "in the pink" with scratch-resistant anodizing. Tip-Lock for added safety.







## 1660VIB RAINBOW LEEK

**STEEL** SANDVIK 14C28N, TITANIUM-OXIDE RAINBOW COATING  
**HANDLE** 410, TITANIUM-OXIDE RAINBOW COATING  
**BLADE** 3 IN.  
**CLOSED** 4 IN.  
**WEIGHT** 3.0 OZ.



### SERRATED 1660VIBST

The Leek is a step up in blade length from the Scallion. Yet, the three-inch blade fits in a pleasingly narrow profile. Scratch-resistant titanium-oxide coating. Tip-Lock for added safety. Includes zippered case.

## 1660CKT BLACK LEEK

**STEEL** SANDVIK 14C28N, DLC COATING  
**HANDLE** 410, DLC COATING  
**BLADE** 3 IN.  
**CLOSED** 4 IN.  
**WEIGHT** 3.0 OZ.



### SERRATED 1660CKTST

The versatile Leek also comes in basic black. Choose partially serrated or smooth edge. Tip-Lock for added safety.



## 1660BB ALUMINUM LEEK

**STEEL** SANDVIK 14C28N, BEAD-BLASTED FINISH  
**HANDLE** 6061-T6 ANODIZED ALUMINUM  
**BLADE** 3 IN.  
**CLOSED** 4 IN.  
**WEIGHT** 2.4 OZ.



This Leek features lightweight anodized aluminum handles with our "double-smoked" finish. No two are exactly alike. Tip-Lock for added safety.

## 1660G10 G-10 LEEK

**STEEL** S30V, STONEWASHED FINISH  
**HANDLE** TEXTURED G-10  
**BLADE** 3 IN.  
**CLOSED** 4 IN.  
**WEIGHT** 2.6 OZ.



Textured G-10 scales make this Leek as easy to handle as it is to open. A stonewashed blade finish and safety Tip-Lock are the finishing touches.



## 1660 LEEK

**STEEL** SANDVIK 14C28N, BEAD-BLASTED FINISH  
**HANDLE** 410, BEAD-BLASTED FINISH  
**BLADE** 3 IN.  
**CLOSED** 4 IN.  
**WEIGHT** 3.0 OZ.



### SERRATED 1660ST

This is the Leek, straight-up. All stainless steel, all the time. Perfect for frame lock lovers; plus a Tip-Lock for added security. Choose smooth or partially serrated edge.

## 1660CB COMPOSITE LEEK

**STEEL** SANDVIK 14C28N/D2 COMPOSITE, BEAD-BLASTED FINISH  
**HANDLE** 410, BEAD-BLASTED FINISH  
**BLADE** 3 IN.  
**CLOSED** 4 IN.  
**WEIGHT** 2.9 OZ.



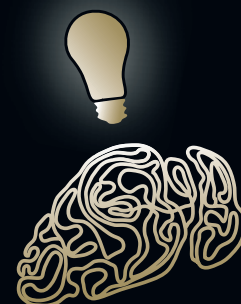
The Leek is just that much more awesome with Kershaw's patent-pending Composite Blade. D2 on the cutting edge, 14C28N on the spine. Tip-Lock for added safety. Includes zippered case.





# DUDE, WHERE'S MY KNIFE?

Making a production knife is a complicated process. Here's what happens from start to finish...



## What kind of knife should we make?

What kind of knife does the end user need and want?  
What do our retailers need and want?  
And what's the sales outlook for knives that match these needs and wants?



## What style of knife matches the need?

Work knife?  
Tactical knife?  
Gentleman's knife?  
Sporting knife?



## It's pencil time

The design engineers sketch from 50 to 100 different initial designs for the new knife.



## We choose the ONE

With the sales and management teams, we narrow it down to one design.

## From pixels to prototype

In the prototype stage, neither the parts nor the fixtures are in final form. This is because refinements are continually being made to ensure that the prototype works as expected. In effect, each prototype is a custom-made knife—very far from a final “production model.”

We will output approximately a dozen prototypes, making additional adjustments and changes until the team is satisfied that the prototypes are ready to show.

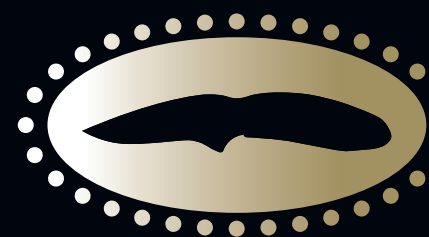
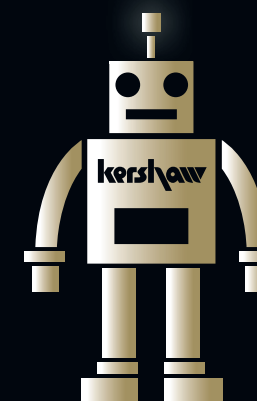


## The parts & fixtures are programmed

The designer's CAD drawing is just the start. Now each part must be translated to a program that interacts with our production machinery. The machining and engineering teams write and refine these programs for each individual part in the “assembly,” that is, all the parts that make up the knife.

In addition to the parts, the fixtures—the devices that locate and hold the individual pieces during the manufacturing process—must be designed, engineered, and programmed.

There are dozens and dozens of parts and fixtures for each new knife.



## First look

With the completed CAD drawings, we prepare marketing graphics and information about the new knife in order to preview it to our industry at an important trade show—like the SHOT Show or the Blade Show.

## On to Computer Aided Design (CAD)

The selected design is scanned into the computer and the real work begins. The design must now become a real knife. Each individual part of the knife, from blade to screws must be designed in real dimensions on the computer.

Questions we have to answer include:

How do the parts fit together?  
Do they work properly?  
What materials will we use?  
What's interesting or cool about this knife?





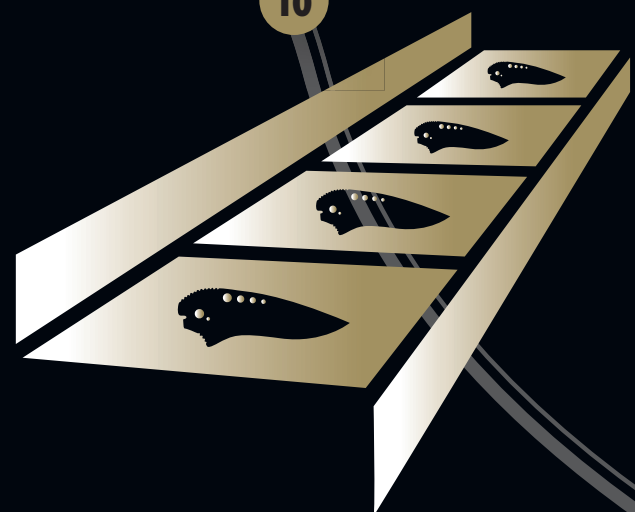
Knife, meet world

At the trade show, we'll get customer and industry feedback... which can result in MORE changes or adjustments to the prototype.

Production begins

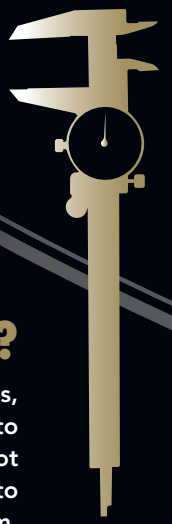
The time between when the prototype is shown and when the knife actually goes into production can be many months. Here's why:

- Production parts and fixtures must be completed.
• Any "tolerance stack up" must be resolved.
• Repeatability must be ensured.
• Manufacturing efficiencies must be developed.
• Each component must be "proofed out" to ensure every step in the process is smooth and efficient.



What is tolerance stack up?

All manufacturing is done to within certain tolerances, that is, allowable imperfections. However, if many of the parts get made to the maximum tolerance, the process can be "off" enough that not everything will fit properly during final assembly. It takes time to revise the dimensions of the parts to correct this standard problem.



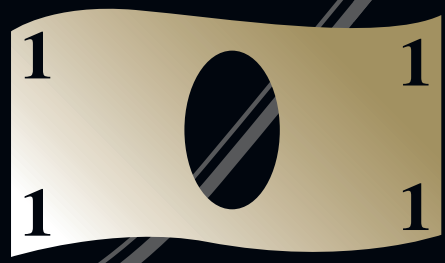
Scheduling the factory

Our Tualatin factory has been so busy lately fulfilling current orders that production of new knives often must wait until it can be scheduled.



First production run

With production issues resolved, materials purchased, and factory scheduled, we are ready to make a small first production run of about 200 knives. This enables us to further refine parts and processes, including receiving feedback from our expert assembly team to ensure each knife can be put together smoothly.



Purchasing the materials

Of course, before we can make anything, we must have the raw materials we need for manufacturing. Our purchasing specialists secure the best pricing on the materials specified for each new knife—and ensure that they arrive when production is scheduled to begin.

Sales orders are taken

Throughout the production process, the Kershaw sales team has been talking to our network of dealers and retailers, writing orders for the new knife.



Orders filled, shelves stocked

Based on orders, we make a full-sized production run.

Knives are packaged and shipped to retailers.

Retailers stock their shelves—and finally, they're ready for customers to buy!





## 1670RD RED BLUR

**STEEL** SANDVIK 14C28N, BEAD-BLASTED FINISH  
**HANDLE** 6061-T6 ANODIZED ALUMINUM, TRAC-TEC INSERTS  
**BLADE** 3-3/8 IN.  
**CLOSED** 4-1/2 IN.  
**WEIGHT** 4.0 OZ.



**BLACK BLUR** 1670BLK/1670BLKST (SERRATED)  
**STEEL** SANDVIK 14C28N, DLC COATING  
**HANDLE** 6061-T6 ANODIZED ALUMINUM, TRAC-TEC INSERTS

This is the original Blur in dark red or basic black. Trac-Tec handle inserts ensure a secure grip, even in less-than-ideal environmental conditions.

## 1560 WHIRLWIND

**STEEL** SANDVIK 14C28N, SATIN FINISH  
**HANDLE** GLASS-FILLED NYLON  
**BLADE** 3-1/4 IN.  
**CLOSED** 4-1/2 IN.  
**WEIGHT** 3.5 OZ.



**SERRATED** 1560ST

One of the first—and still one of our best-selling SpeedSafe knives. The Whirlwind is a big handful of a knife, perfect for work or as a larger EDC.



## 1670S30V S30V BLUR

**STEEL** S30V, STONEWASHED FINISH  
**HANDLE** 6061-T6 ANODIZED ALUMINUM, TRAC-TEC INSERTS  
**BLADE** 3-3/8 IN.  
**CLOSED** 4-1/2 IN.  
**WEIGHT** 4.0 OZ.



Want a premium Blur? This is it. The S30V blade takes and holds an edge extremely well; it's tough and wear resistant, too.

## 1550 BLACKOUT

**STEEL** SANDVIK 14C28N, DLC COATING  
**HANDLE** GLASS-FILLED NYLON  
**BLADE** 3-1/4 IN.  
**CLOSED** 4-1/2 IN.  
**WEIGHT** 3.5 OZ.



**SERRATED** 1550ST

When it was first introduced, the Blackout was selected as the Blade Show's Best Buy. And it still is. Great for work, outdoors, or everyday carrying, the Blackout is a Kershaw best seller.



31



## 1670TBLKST TANTO BLUR

**STEEL** SANDVIK 14C28N, DLC COATING  
**HANDLE** 6061-T6 ANODIZED ALUMINUM, TRAC-TEC INSERTS  
**BLADE** 3-3/8 IN.  
**CLOSED** 4-1/2 IN.  
**WEIGHT** 4.0 OZ.



This Blur offers tactical styling with a partially serrated tanto blade. Black DLC coating and anodized aluminum handles complete its discrete, matte look.

## 1515 RANDOM TASK II

**STEEL** SANDVIK 14C28N, STONEWASHED FINISH  
**HANDLE** TEXTURED G-10  
**BLADE** 3-1/4 IN.  
**CLOSED** 4-1/2 IN.  
**WEIGHT** 3.8 OZ.



Back by popular demand. The original Random Task was designed by custom knifemaker, Ken Onion. This newest version features upgraded steel and textured G-10 handle scales.







## 1820 NEEDS WORK

**STEEL** SANDVIK 14C28N, BEAD-BLASTED FINISH  
**HANDLE** GLASS-FILLED NYLON  
**BLADE** 3 IN.  
**CLOSED** 4-1/8 IN.  
**WEIGHT** 3.5 OZ.



A lightweight utility-style knife that's ideal for everyday carry. Blade shape offers excellent chopping, slicing, and piercing strength.

## 1950 TREMOR

**STEEL** 8CR13MOV, BEAD-BLASTED FINISH  
**HANDLE** TEXTURED G-10  
**BLADE** 3-3/4 IN.  
**CLOSED** 5-1/4 IN.  
**WEIGHT** 6 OZ.



The Tremor's ergonomically curved handle and aggressive index-finger jimping assure a solid grip every time. If you haven't had your hands on one of these yet, you've got to get a grip.



32



## 1940 COMPOUND

**STEEL** 8CR13MOV, BEAD-BLASTED FINISH  
**HANDLE** GLASS-FILLED NYLON  
**BLADE** 3-1/2 IN.  
**CLOSED** 4-5/8 IN.  
**WEIGHT** 3.8 OZ.



This versatile utility knife was designed to provide excellent slicing capability with extra grip control. Glass-filled nylon handles ensure this larger knife is light enough for easy carry.

## 1960 DRONE

**STEEL** 8CR13MOV, BEAD-BLASTED FINISH  
**HANDLE** GLASS-FILLED NYLON  
**BLADE** 2-3/4 IN.  
**CLOSED** 4-1/8 IN.  
**WEIGHT** 3.4 OZ.



**SERRATED** 1960ST

Designer Tim Galyean combined a classic clip-point blade with an ultra-modern handle to create this right-sized EDC.



33



## 1930 ASSET

**STEEL** 8CR13MOV, BEAD-BLASTED FINISH  
**HANDLE** GLASS-FILLED NYLON  
**BLADE** 3-1/4 IN.  
**CLOSED** 4-5/8 IN.  
**WEIGHT** 3.8 OZ.



A lightweight and maneuverable trailing-point blade, secure-grip handle, and a value price make this Asset a real asset to any knife collection

## 1605 CLASH

**STEEL** 8CR13MOV, BEAD-BLASTED FINISH  
**HANDLE** GLASS-FILLED NYLON  
**BLADE** 3 IN.  
**CLOSED** 4-1/4 IN.  
**WEIGHT** 4 OZ.



**SERRATED** 1605ST

The Clash's drop-point blade with just a hint of recurve is a versatile style that excels at a wide variety of tasks. An ambidextrous flipper makes it a great choice for left- or right-handers.







## 3650 VOLT II

**STEEL** 8CR13MOV, BEAD-BLASTED FINISH  
**HANDLE** GLASS-FILLED NYLON  
**BLADE** 3 1/8 IN.  
**CLOSED** 3-7/8 IN.  
**WEIGHT** 3.4 OZ.



### SERRATED 3650ST

Designed by RJ Martin, the Volt II features the same versatile blade and handle style as the original Kershaw Volt—but at a value price.

## 3200 RIPCORDER

**STEEL** SANDVIK 14C28N, POLISHED DLC COATING  
**HANDLE** 6061-T6 ANODIZED ALUMINUM, TRAC-TEC INSERTS  
**BLADE** 3-7/16 IN.  
**CLOSED** 4-3/8 IN.  
**WEIGHT** 4.2 OZ.



The Ripcord's patented design provides the strength and stability of a fixed blade knife, yet stores as compactly as a folding knife. The key is Kershaw's "Out the Front" (OTF) design. With OTF, the blade slides out the front of the handle into a secure, fixed-blade position. A convenient belt sheath doubles as the OTF deployment system to engage or disengage the knife's locking function.



## 1830 OSO SWEET

**STEEL** 8CR13MOV, SATIN FINISH  
**HANDLE** GLASS-FILLED NYLON  
**BLADE** 3-1/2 IN.  
**CLOSED** 4-3/8 IN.  
**WEIGHT** 4.2 OZ.



This is indeed one sweet pocketknife. With a classic drop-point blade, it's plenty versatile and with Speed-Safe accessed with an ambidextrous flipper, it's the right choice for everyone.

## 3140 WILDCAT RIDGE

**STEEL** 8CR13MOV, SATIN FINISH  
**HANDLE** STAINLESS STEEL, CROSS-GROOVED ABS INLAY  
**BLADE** 3-1/2 IN.  
**CLOSED** 4-7/8 IN.  
**WEIGHT** 4.3 OZ.



**BLACK GULCH** 3120  
**BLADE** 3 IN.  
**CLOSED** 4-1/8 IN.  
**WEIGHT** 4.3 OZ.  
INCLUDES NYLON SHEATH

**CORRAL CREEK SHEEPSFOOT** 3115BT  
**BLADE** 2-1/2 IN.  
**CLOSED** 3-3/8 IN.  
**WEIGHT** 2.2 OZ.

**CORRAL CREEK** 3115  
**BLADE** 2-1/2 IN.  
**CLOSED** 3-3/8 IN.  
**WEIGHT** 2.2 OZ.

**GRANT COUNTY** 3100  
**BLADE** 1-7/8 IN.  
**CLOSED** 2-5/8 IN.  
**WEIGHT** 1.2 OZ.



35



## FOR WORK & FOR DRESS

Working class good looks, built ranch-tough. Kershaw work knives handle the full range of everyday tasks—from stripping wire and cutting rope to opening boxes and cleaning battery terminals. Keep one in the truck box, the garage, the workshop—and of course, the pocket.

When it's time to clean up, choose one of these handsome gentleman's knives. The Kershaw Crown and Silver Spur are gentlemanly choices that you can take just about anywhere.

## 2825 SILVER SPUR II

**STEEL** AUS6A, SATIN FINISH  
**HANDLE** ALUMINUM  
**BLADE** 2-1/4 IN.  
**CLOSED** 3 IN.  
**WEIGHT** 0.9 OZ.



**SILVER SPUR** 2800  
**BLADE** 1-7/8 IN.  
**CLOSED** 2-1/2 IN.  
**WEIGHT** 0.6 OZ.

The Silver Spur's lightweight aluminum handle is embossed with the Kershaw logo and ribbed for a secure grip.







## 1445 HALF-TON

**STEEL** 8CR13MOV, SATIN FINISH  
**HANDLE** GLASS-FILLED NYLON, NON-SLIP INSERTS  
**BLADE** 2-1/2 IN.  
**CLOSED** 3-5/8 IN.  
**WEIGHT** 3.2



The little guy's always the toughest. The Half-Ton's short, chubby blade works on and on. And just for grins, the pocketclip is shaped like a mini-wrench.

## 3160 CROWN

**STEEL** 8CR13MOV, SATIN FINISH  
**HANDLE** SATIN-FINISH STEEL, POLISHED MICARTA®  
**BLADE** 3-1/4 IN.  
**CLOSED** 4-1/4 IN.  
**WEIGHT** 3.8 OZ.



Polish your image with the Kershaw Crown. From its satin-polished blades and bolsters to its handsome polished Micarta® scales, this is a classic gentleman's knife.



## 1045 BLACK COLT II

**STEEL** 8CR13MOV, SATIN FINISH  
**HANDLE** CO-POLYMER  
**BLADE** 3 IN.  
**CLOSED** 4-1/8 IN.  
**WEIGHT** 3.5 OZ.



This tough little work knife is one of our most popular. The clip-point blade configuration tackles a variety of tasks, while the durable, co-polymer handle provides a secure grip. Includes sheath.

## 1920 SELECT FIRE

**STEEL** 8CR13MOV, BEAD-BLASTED FINISH  
**HANDLE** GLASS-REINFORCED NYLON  
**BLADE** 3-3/8 IN.  
**CLOSED** 4-1/4 IN.  
**WEIGHT** 5.0 OZ.  
1/4" HEX DRIVE AND ASSORTED BITS



Designed by Grant & Gavin Hawk, the Select Fire makes a great addition to every tool and truck box. It offers a big, useful blade, plus onboard 4-piece bit set with bit driver.



## 1060 BLACK HORSE II

**STEEL** 8CR13MOV, SATIN FINISH  
**HANDLE** CO-POLYMER  
**BLADE** 3-3/4 IN.  
**CLOSED** 4-7/8 IN.  
**WEIGHT** 4.6 OZ.



This is simply a great work knife. The clip-point blade configuration deftly accomplishes every job you ask it to, and the durable, co-polymer handle provides a secure grip. Includes sheath.

## 4351 MILITARY KNIFE

**STEEL** ONE-PIECE, DROP-FORGED 1.4116 GERMAN STAINLESS STEEL, BEAD-BLASTED FINISH  
**HANDLE** POM SCALES  
**BLADE** 4-1/2 IN.  
**OVERALL** 9 IN.  
**WEIGHT** 4.4 OZ.



The knife's simple shape enables it to handle well, move quickly, and lend itself to a variety of grip styles. The included sheath enables multiple carry options, including under the coat, belt, arm, or leg.







### 3000 D.W.O.

**STEEL** 8CR13MOV, SATIN FINISH  
**HANDLE** CO-POLYMER  
**BLADE** 2-3/8 IN.  
**OVERALL** 3-1/4 IN.  
**WEIGHT** 1.6 OZ.



#### RED D.W.O. 3000RD

The D.W.O.'s small-but-mighty clip-point blade is perfect for taking on all those little tasks around the house or shop; the ribbed co-polymer handle provides an extra-secure and comfortable grip.

### 1620C CAMO SCALLION

**STEEL** 420HC, BEAD-BLASTED FINISH  
**HANDLE** 6061-T6 ANODIZED ALUMINUM, REALTREE®  
HARDWOODS HD PATTERN  
**BLADE** 2-1/4 IN.  
**CLOSED** 3-1/2 IN.  
**WEIGHT** 2.3 OZ.



The Camo Scallion is the perfect mid-sized knife to accompany you on your next hunting trip—or for everyday carry. The RealTree camo pattern is applied to lightweight anodized aluminum handles for a durable, scratch-resistant finish. Tip-Lock for added safety.



## IN THE GREAT OUTDOORS, EVERYBODY NEEDS A GOOD KNIFE

For fishing, hunting, camping, hiking, climbing—and just about any other outdoor sport—you're going to want to have a trusty Kershaw along. These are true sporting knives made by a sporting goods company. From our new lines of American-Made Hunters and Pro-Grade Specialty Fish & Game Knives, to handy campsite gear, to our famous Blade Traders, these tools are must-haves whether you're working or playing outside. Most include sheaths, blade guards, or storage cases.

### 1082 FIELD KNIFE

**STEEL** SANDVIK 14C28N, STONEWASHED FINISH  
**HANDLE** TEXTURED G-10 OVERLAY  
**BLADE** 3-1/4 IN.  
**OVERALL** 7-1/4 IN.  
**WEIGHT** 4.0 OZ.



#### ORANGE FIELD KNIFE 1082OR

Part of the Kershaw American-Made Hunters series. The Field Knife is the perfect all-around hunting knife, moving from field to campsite tasks with ease. Basic black or safety orange scales. Includes sheath.



39



### 1050 FOLDING FIELD

**STEEL** 8CR13MOV, MIRROR POLISH  
**HANDLE** BRASS BOLSTERS, PMMA PLASTIC SCALES  
**BLADE** 3-1/8 IN.  
**CLOSED** 4-3/4 IN.  
**WEIGHT** 9 OZ.



Back by popular demand, the Kershaw Folding Field knife is just about as classic as a hunting knife can get. For many years, it was our flagship knife—and now it's back. With its gleaming brass bolster and butt plus high-quality Kershaw manufacturing, now is the right time to snap it up! Includes sheath.

### 1080 SKINNING KNIFE

**STEEL** SANDVIK 14C28N, STONEWASHED FINISH  
**HANDLE** TEXTURED G-10 OVERLAY  
**BLADE** 2-3/8 IN.  
**OVERALL** 6 IN.  
**WEIGHT** 3.6 OZ.



#### ORANGE SKINNING KNIFE 1080OR

Part of the Kershaw American-Made Hunters series. Super-sharp and highly maneuverable, this Skinning Knife is the one you'll reach for time and time again. Basic black or safety orange scales. Includes sheath.







## 1060RT CAMO BLACK HORSE II

**STEEL** 8CR13MOV, SATIN FINISH  
**HANDLE** CO-POLYMER, REALTREE® HARDWOODS HD PATTERN  
**BLADE** 3-3/4 IN.  
**CLOSED** 4-7/8 IN.  
**WEIGHT** 4.6 OZ.



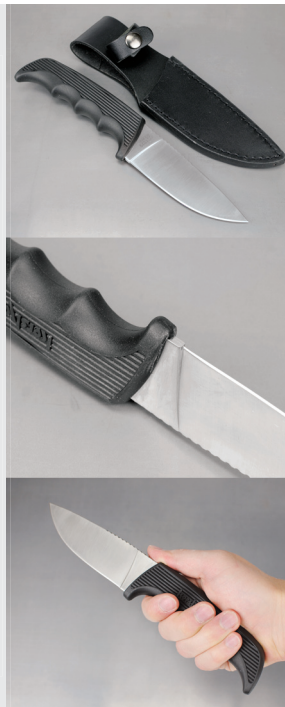
RealTree® camo, a versatile blade, and a sure-grip handle makes Kershaw's Camo Black Horse II one of our most popular hunters. Includes sheath.

## 1010 ROUGHNECK

**STEEL** AUS6A, SATIN FINISH  
**HANDLE** CO-POLYMER  
**BLADE** 6-1/4 IN. PARTIALLY SERRATED SPINE  
**OVERALL** 11-1/8 IN.  
**WEIGHT** 6.3 OZ.



The Roughneck is one sturdy, very practical hunting knife. Razor-sharp edge on one side of the blade, partial serration on the other. Includes sheath.



## 1029 BEAR HUNTER II

**STEEL** 8CR13MOV, SATIN FINISH  
**HANDLE** CO-POLYMER  
**BLADE** 4-1/2 IN.  
**OVERALL** 9-1/2 IN.  
**WEIGHT** 5.3 OZ.



It's big, bold, and incredibly practical. This quality blade steel holds its edge and the sure-grip handle handles just about anything. Includes sheath.



## ROCKY MOUNTAIN ELK FOUNDATION EDITIONS

Join Kershaw and the Rocky Mountain Elk Foundation (RMEF) as we help to ensure the future of elk and their habitat for future generations. More than 5.7 million acres of habitat in North America have been conserved and enhanced by RMEF efforts. We're proud to have been a RMEF partner since 2000, but this year the Kershaw and RMEF partnership is better than ever with four great Kershaw knives to choose from—with a portion of the proceeds from every knife going to benefit the Foundation.

**SKINNING KNIFE** 10800RRMEF  
**STEEL** SANDVIK 14C28N, STONEWASHED FINISH  
**HANDLE** TEXTURED G-10 OVERLAY  
**BLADE** 2-3/8 IN.  
**OVERALL** 6 IN.



**WILDCAT RIDGE** 3140WRRMEF  
**STEEL** 8CR13MOV, SATIN FINISH  
**HANDLE** STAINLESS STEEL, HARDWOOD INLAY  
**BLADE** 3-1/2 IN.  
**OVERALL** 4-7/8 IN.



**VAPOR III** 1655RMEF  
**STEEL** 8CR13MOV, BEAD-BLASTED FINISH  
**HANDLE** STAINLESS STEEL  
**BLADE** 3-1/2 IN.  
**OVERALL** 4-5/8 IN.



**VOLT II** 3650RMEF  
**STEEL** 8CR13MOV, BEAD-BLASTED FINISH  
**HANDLE** GLASS-FILLED NYLON  
**BLADE** 3-1/8 IN.  
**OVERALL** 3-7/8 IN.



## 1028 ANTELOPE HUNTER II

**STEEL** 8CR13MOV, SATIN FINISH  
**HANDLE** CO-POLYMER  
**BLADE** 3-5/8 IN.  
**OVERALL** 8 IN.  
**WEIGHT** 3.6 OZ.



### ORANGE ANTELOPE HUNTER II 1028OR

The Antelope Hunter II's high-performance blade steel holds its edge while the contoured handle offers a secure grip in any conditions. Includes sheath. Safety orange or basic black handle.

## 2520 ZIPIT

**STEEL** 420J2, SATIN FINISH  
**FINGER HOLE** RUBBER INSERT  
**BLADE** 1/2 IN.  
**OVERALL** 3-3/4 IN.  
**WEIGHT** 1.6 OZ.

### ORANGE ZIPIT 2520OR

Got a favorite hunting knife and just need the gut hook? Get the Zipit. Rubber insert keeps finger comfortable during use, handy size makes it easy to pack with your gear.







## 1210 SKEETER I

**HANDLE** SOFT-GRIP OVER-MOLD FINGER HOLES  
**OVERALL** 4-1/4 IN.  
**WEIGHT** 0.8 OZ.

**SKEETER II** (MICRO-SERRATED) 1215  
**OVERALL** 4-1/4 IN.  
**WEIGHT** 0.8 OZ.

Compact and durable, Skeeter fly-tying scissors are designed to cut through a wide variety of materials with ease. An extra fine point provides for precise trimming. The comfortable finger loops provide precise control during use.

## 1006K AMPHIBIAN

**STEEL** 420J2, SATIN FINISH  
**HANDLE** 420J2, FULL-TANG SKELETON, CO-POLYMER INSERT  
**BLADE** 3-3/4 IN. DOUBLE-EDGED, PARTIALLY SERRATED  
**OVERALL** 7-3/4 IN.  
**WEIGHT** 3.2 OZ.



The Amphibian provides all the strength of solid, corrosion-resistant 420J2 stainless steel from tip to pommel, but with a skeleton handle design to reduce weight. A co-polymer insert in the handle assures an excellent grip. Includes a diver's sheath with leg straps and adjustable quick-release buckles.



## 1259 9 IN. FILLET

**STEEL** 420J2, SATIN FINISH  
**HANDLE** CO-POLYMER  
**BLADE** 9-1/4 IN.  
**CLOSED** 14-1/4 IN.  
**WEIGHT** 3.8 OZ.



**7-1/2 IN. FILLET** 1257  
**BLADE** 6 IN.  
**OVERALL** 13-1/8 IN.  
**WEIGHT** 5.6 OZ.

A flexible blade with soft touch, sure-grip handle; neon accents make it easy to spot in a marine environment. Choose 7½-inch for small-to-medium-sized fish, 9-inch for larger fish. Includes ABS sheath.

## 1008 SEA HUNTER

**STEEL** 420J2, SATIN FINISH  
**HANDLE** NEON PLASTIC, CO-POLYMER OVER-MOLD  
**BLADE** 3-3/4 IN. DOUBLE-EDGED, PARTIALLY SERRATED  
**OVERALL** 7-3/4 IN.  
**WEIGHT** 3.0 OZ.



Corrosion-resistant 420J2 stainless steel has open-tang construction to reduce weight. Neon accents are easily visible in marine environment. Includes Kydex® multi-function diver's sheath with leg straps and built-in cord and line cutter.



## 1256 FOLDING FILLET

**STEEL** 420J2, SATIN FINISH  
**HANDLE** TEXTURED PLASTIC  
**BLADE** 6 IN.  
**OVERALL** 13-1/8 IN.  
**WEIGHT** 5.6 OZ.



Offers the same top performance all Kershaw fillet knives have to offer—just in a more compact space. Includes lanyard hole and fold-out cleaning spoon.

## 1008BL-P SEA HUNTER

**STEEL** 420J2, SATIN FINISH  
**HANDLE** NEON PLASTIC, CO-POLYMER OVER-MOLD  
**BLADE** 3-1/2 IN. BLUNT-TIP, DOUBLE-EDGED, PARTIALLY SERRATED  
**OVERALL** 7-5/8 IN.  
**WEIGHT** 3.0 OZ.



Has the same corrosion-resistant 420J2 stainless steel, open-tang construction, and neon accents as the regular Sea Hunter, but with a blunt tip for safety. Includes Kydex® multi-function diver's sheath with leg straps and built-in cord and line cutter.







1098AK  
**ALASKAN  
BLADE TRADER**

**BT-11 SKINNING+GUT-HOOK** AUS6A, SATIN FINISH  
**BT-3 HUNTING** 420J2, SATIN FINISH  
**BT-5 SAW** SAW STEEL, SATIN FINISH  
**BT-H HANDLE** CO-POLYMER  
**SKINNING BLADE** 6 IN.  
**HUNTING BLADE** 3-1/2 IN.  
**SAW BLADE** 6 IN.  
**WEIGHT** 11.6 OZ. (TOTAL)



1096FBT  
**FISHERMAN'S  
BLADE TRADER**

**STEEL** 420J2, SATIN FINISH  
**BT-H HANDLE** CO-POLYMER  
**BT-12 FILLET BLADE-A** 7 IN.  
**BT-13 FILLET BLADE-B** 9 IN. PARTIALLY SERRATED  
**WEIGHT** 8.9 OZ. (TOTAL)



1094HBT  
**HUNTER'S  
BLADE TRADER**

**STEEL** 420J2, SAW STEEL, SATIN FINISH  
**BT-H HANDLE** CO-POLYMER  
**BT-3 HUNTING BLADE** 3-1/2 IN.  
**BT-5 SAW BLADE** 6 IN.  
**WEIGHT** 9.2 OZ. (TOTAL)



1091CT  
**CAMP-TOOL  
TRADER**

**STEEL** 420J2, SAW STEEL, SATIN FINISH  
**BT-H TWO HANDLES** CO-POLYMER  
**BT-6 COOK'S BLADE** 6 IN.  
**BT-2 FILLET BLADE** 6 IN.  
**BT-5 SAW BLADE** 6 IN.  
**BT-14 SPATULA** 3-5/8 IN.  
**BT-15 SPOON** 3-5/8 IN.  
**BT-16 FORK** 3 IN.  
**CUTTING BOARD** 10-3/4 IN. X 8 IN.  
**WEIGHT** 60.1 OZ. (TOTAL)



1095SBT  
**SPORTSMAN'S  
BLADE TRADER**

**STEEL** 420J2, SAW STEEL, SATIN FINISH  
**BT-H HANDLE** CO-POLYMER  
**BT-3 HUNTING BLADE** 3-1/2 IN.  
**BT-5 SAW BLADE** 6 IN.  
**BT-2 FILLET BLADE** 6 IN.  
**WEIGHT** 13.1 OZ. (TOTAL)



1099DBT  
**DELUXE  
BLADE TRADER**

**STEEL** 420J2, SAW STEEL, SATIN FINISH  
**BT-H TWO HANDLES** CO-POLYMER  
**BT-6 COOK'S BLADE** 6 IN.  
**BT-2 FILLET BLADE** 6 IN.  
**BT-5 SAW BLADE** 6 IN.  
**BT-7 CARVING BLADE** 3-5/8 IN.  
**BT-8 BREAD BLADE** 3-5/8 IN.  
**BT-4 UTILITY BLADE** 4 IN.  
**WEIGHT** 25.6 OZ. (TOTAL)







## 1019 FIRE STARTER

**SHAFT** STEEL MAGNESIUM FIRESTEEL  
**STRIKER** CHROME-PLATED STEEL  
**HANDLE** PLASTIC  
**SHAFT** 1-3/4 IN.  
**STRIKER** 2-3/4 IN.  
**OVERALL** 3-1/8 IN.  
**WEIGHT** 1.1 OZ.

This magnesium fire starter always strikes a spark—even in damp conditions. A molded plastic handle makes it easy to use and a nylon cord keeps it handy when you need it.

## T TOOL KEY CHAIN T-TOOL

**HANDLE** TEFLON-COATED ALUMINUM  
**OVERALL** 4 IN.  
**WEIGHT** 0.7 OZ.

This is the right tool for adjusting any Kershaw knife.

**INCLUDES**  
#1 Phillips  
T-6  
T-8



## 1018 CAMP AX

**STEEL** ONE-PIECE, DROP FORGED HIGH-CARBON STEEL  
**HANDLE** NON-SLIP OVER-MOLD  
**BLADE** 3-1/2 IN.  
**OVERALL** 11 IN.  
**WEIGHT** 14.5 OZ.



This sturdy axe is drop forged in a single piece for reliable durability. For secure grip, we added a non-slip handle and a handy sheath to protect the blade.

## 2535 ULTRA-TEK SHARPENER

**STEEL** 600-GRIT DIAMOND COATED OVAL SHAFT  
**HANDLE** ALUMINUM  
**SHAFT** 3-3/4 IN.  
**OVERALL** 9-1/2 IN.  
**WEIGHT** 2.0 OZ.

600-grit diamond-coated oval shaft lets you put a nice, Kershaw-sharp edge on your knife. Compact size and light weight make it easy to take with you wherever you go.



## 1120 TASKMASTER SHEARS

**BLADE** 3-1/2 IN. WITH ONE EDGE SERRATED  
**OVERALL** 8-7/8 IN.  
**WEIGHT** 5.1 OZ.



In addition to handling a wide variety of cutting tasks, these shears have a nutcracker, jar opener, bone notch, lid lifter and screwdriver tips. For easy cleaning, the blades fully separate.

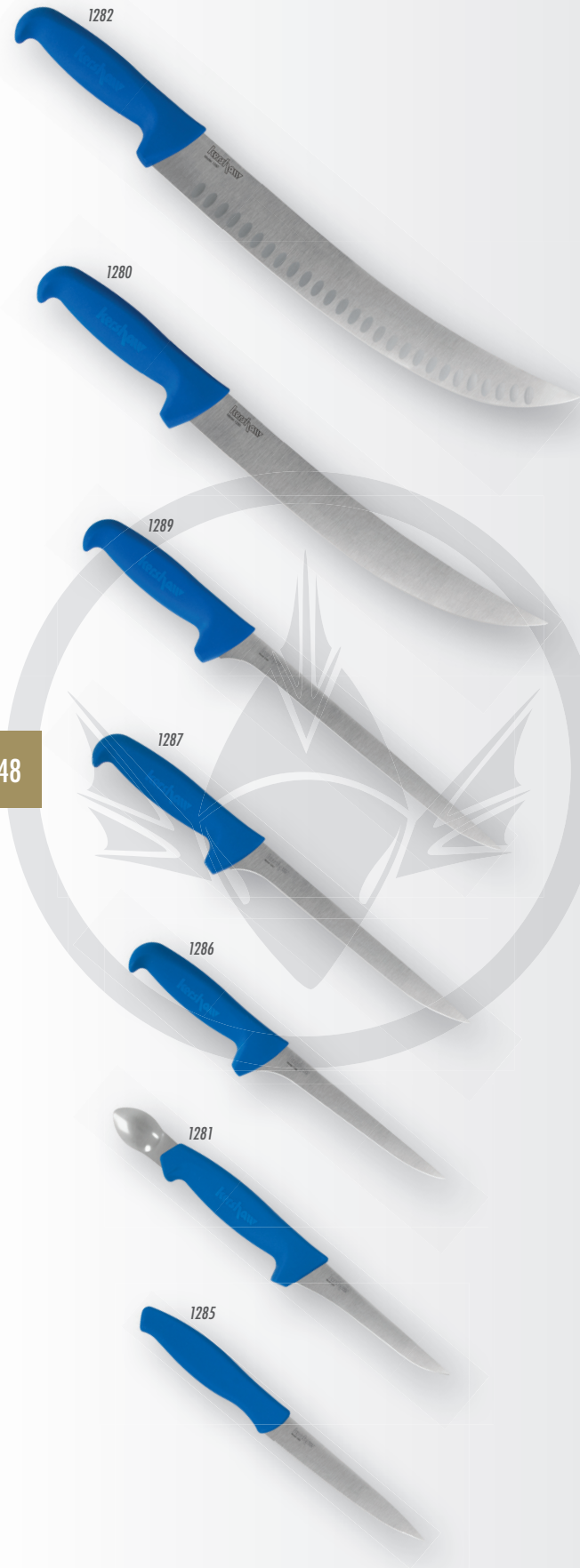
## Z997 KNIFE STORAGE BAG

**MATERIAL** NYLON SIDING WITH NYLON STRAPS  
**DIMENSIONS** 13 IN. WIDE X 7-1/2 IN. HIGH  
**WEIGHT** 12 OZ.

Double zipper case comes with 18 padded knife pockets and carry straps. Includes an 8-pocket removable center section. Ideal for carrying multiple knives







## PRO-GRADE SERIES

**STEEL** 420J2, BRUSHED FINISH  
**HANDLE** POLYPROPYLENE



The Kershaw Pro-Grade Specialty Fish & Game series is all about having the right tool for the job. All have a premium, corrosion-resistant blade with just the right amount of flex to make the job easier. The handle is a proven design that really lets your hand lock into place. In addition, all Pro-Grade knives are designed to be lightweight so fish and game processing is less tiring. Includes blade protector with slits to allow air to circulate.

**12 IN. CIMETER** 1282  
**BLADE** 12 IN.  
**OVERALL** 17-1/2 IN.  
**WEIGHT** 8.6 OZ.

**10 IN. CURVED BREAKING** 1280  
**BLADE** 10 IN.  
**OVERALL** 15-1/2 IN.  
**WEIGHT** 6.0 OZ.

**9 IN. NARROW FILLET** 1289  
**BLADE** 9 IN.  
**OVERALL** 14-1/4 IN.  
**WEIGHT** 4.0 OZ.

**7-1/2 IN. NARROW FILLET** 1287  
**BLADE** 7-1/2 IN.  
**OVERALL** 12-3/4 IN.  
**WEIGHT** 4.0 OZ.

**6 IN. NARROW FILLET** 1286  
**BLADE** 6 IN.  
**OVERALL** 11-1/4 IN.  
**WEIGHT** 3.6 OZ.

**4-1/2 IN. SPOON HANDLE GUTTING KNIFE** 1281  
**BLADE** 4-1/2 IN.  
**OVERALL** 10 IN.  
**WEIGHT** 4.2 OZ.

**4-3/4 IN. HERRING KNIFE** 1285  
**BLADE** 4-1/2 IN.  
**OVERALL** 8-7/8 IN.  
**WEIGHT** 1.4 OZ.  
DOES NOT INCLUDE BLADE GUARD



## KITCHEN CUTLERY 9900 SERIES

**STEEL** AUS6A  
**HANDLE** CO-POLYMER



With cutting performance to rival much more expensive sets, Kershaw kitchen cutlery offers high-quality, high-carbon stainless blade steel that takes and holds a brilliantly sharp edge. Soft-touch handles provide a soft-yet-firm, non-slip grip that reduces hand fatigue and makes cutting more comfortable. NSF certified.

**HONING STEEL** 9990  
**STEEL ROD** 9 IN. (22.9CM)  
**OVERALL** 14-1/4 IN.  
**WEIGHT** 13.6 OZ.

**SLICING** 9970  
**BLADE** 9 IN. (22.9CM)  
**OVERALL** 14-1/8 IN.  
**WEIGHT** 3.9 OZ.

**BREAD** 9960  
**BLADE** 8 IN. (20.3CM)  
**OVERALL** 12-7/8 IN.  
**WEIGHT** 3 OZ.

**CHEF'S** 9945  
**BLADE** 8 IN. (20.3CM)  
**OVERALL** 13 IN.  
**WEIGHT** 6.1 OZ.

**SANTOKU** 9950  
**BLADE** 7 IN. (17.8CM)  
**OVERALL** 12 IN.  
**WEIGHT** 3.5 OZ.

**CHEF'S** 9940  
**BLADE** 6 IN. (15.2CM)  
**OVERALL** 11-3/16 IN.  
**WEIGHT** 4 OZ.

**BONING** 9920  
**BLADE** 5-1/2 IN. (14.0CM)  
**OVERALL** 10-3/8 IN.  
**WEIGHT** 2.8 OZ.

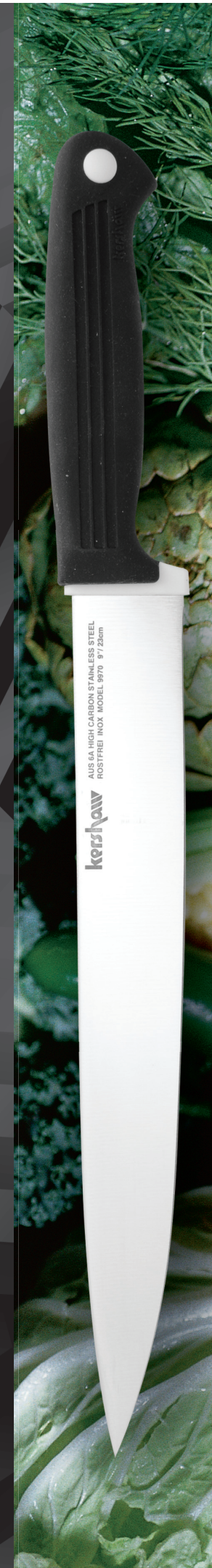
**STEAK** 9922  
**BLADE** 4-5/8 IN. (11.8CM)  
**OVERALL** 8-3/16 IN.  
**WEIGHT** 1.6 OZ.

**UTILITY** 9921  
**BLADE** 4-5/8 IN. (11.8CM)  
**OVERALL** 8-3/16 IN.  
**WEIGHT** 1.5 OZ.

**PARING** 9915  
**BLADE** 3-3/4 IN. (9.5CM)  
**OVERALL** 7-5/8 IN.  
**WEIGHT** 1.5 OZ.

**VEGETABLE** 9910  
**BLADE** 3-1/4 IN. (8.2CM)  
**OVERALL** 7-1/4 IN.  
**WEIGHT** 1.4 OZ.

**PARING** 9900  
**BLADE** 2-7/8 IN. (7.3CM)  
**OVERALL** 7 IN.  
**WEIGHT** 1.4 OZ.





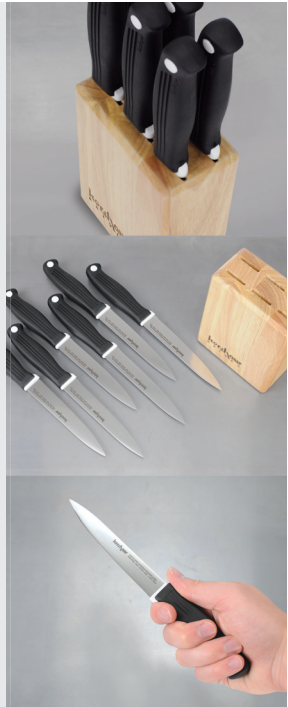


## 9900-7 9900 BLOCK SET

This seven-piece set has all the kitchen essentials—from Chef's knife to Honing Steel, plus a beautiful hardwood block for storage.

### INCLUDES

9940 Chef's  
9900 Paring  
9921 Utility  
9979 Slicing  
9990 Honing steel  
Kitchen shears  
Hardwood block



## 9922-7 STEAK KNIFE SET

Cut your steak with these razor-sharp steak knives and keep more of the juices where they belong—in the steak. You get a set of six serrated steak knives in a handsome hardwood storage block.

### INCLUDES

9922 Steak knife (6)  
Hardwood block



## CB-3 CUTTING BOARD SET

This handy set includes three key pieces no kitchen should be without. The Chef's knife handles most kitchen chores with ease. The Paring knife is perfect for smaller jobs, from peeling to mincing. Cutting on the wooden board helps keep you knives sharper for a longer period of time.

### INCLUDES

9945 Chef's  
9900 Paring  
Wooden cutting board

# ADVANCED MATERIALS & INNOVATIVE TECHNOLOGY

Kershaw pioneered many of the materials and technologies now in common use throughout the knife industry. From high-performance blade steels, to handle materials like G-10 and titanium, to Diamond-Like Carbon (DLC) blade coatings, Kershaw has always been in the forefront. We not only think that keeps things interesting, but it also ensures that Kershaw Knives offer our customers both attention-getting looks and the highest level of performance.

When it comes to technology, Kershaw design engineers are always working on the Next Big Thing. While technologies that we introduced to the market—like SpeedSafe assisted opening—continue to be in demand, we're always at work on innovative, new technologies, too. Our patent-pending Composite Blade technology, which combines two steels in one blade, and the KVT ball-bearing opening system are just two examples.

In the next few pages, we'll introduce you to the types of steel Kershaw is currently using, explain how we make our Composite Blades, and provide a rundown on our handle materials and blade coatings. You'll also find a glossary of common knife-industry terms and a new index that makes it easy to look up any Kershaw knife by its model number. (To look up our products by name and category, please check the Table of Contents in the front.)

# IT STARTS WITH THE STEEL



1. Molybdenum
2. Cobalt
3. Iron
4. Carbon
5. Nickel
6. Chromium
7. Vanadium
8. Tungsten
9. Manganese
10. Silicon



Steel is an alloy of iron and carbon. Most steel also has additional elements alloyed in it to enhance specific characteristics. For example, stainless steels contain chromium to enhance stain resistance. Nickel adds strength and toughness. Here’s a quick guide to the various elements that can make up blade steel—as well as the properties specific elements enhance:

## MOLYBDENUM

Improves hardenability, wear resistance, toughness, helps during tempering to ensure steel does not become brittle

## COBALT

Improves strength and hardness at elevated temperatures

## IRON

The element iron is the main “ingredient” in steel. Fortunately for knife users, iron is the most common element on the planet; it is alloyed with carbon to produce steel.

## CARBON

Improves strength, hardness, wear resistance, and hardenability; can reduce ductibility and toughness

## NICKEL

Improves strength, toughness, corrosion resistance, and hardenability

## CHROMIUM

Improves toughness, hardenability, wear and corrosion resistance; promotes hardness during heat treatment

## VANADIUM

Improves strength, toughness, abrasion resistance at elevated temperatures; controls grain growth during heat treatment

## TUNGSTEN

Improves hardness, strength, wear resistance, toughness, and stability at high temperatures

## MANGANESE

Improves toughness in high-strength, low-alloy steels

## NITROGEN

Improves strength and hardness; decreases toughness and ductibility

## PHOSPHORUS

Improves strength, hardenability, and corrosion resistance, but reduces toughness

## SILICON

Improves strength, hardness, corrosion resistance, and electrical conductivity

## SULPHUR

Improves machinability with manganese, lowers impact strength and ductibility

# KERSHAW BLADE STEELS

There’s no such thing as one “best” type of steel for every type of knife. Instead, think in terms of the best steel for a particular application. Kershaw chooses its blade steels based on a variety of criteria, from ability to hold an edge and corrosion resistance to strength, toughness, and value. Then each type of steel is matched to the function of the knife, the design of the blade, and angle to which it will be sharpened—among other knifemaker’s considerations. As steel technology continues to evolve, Kershaw will continue to select the very best of these steels to become Kershaw knife blades.

Here’s an introduction to some of our newest high-performance steels:

## UDDEHOLM ELMAX®

ELMAX is a third-generation powdered steel. Incredibly clean, it has virtually no nonmetallic inclusions and offers an extremely uniform distribution of carbide. A high chromium-vanadium-molybdenum alloyed steel, ELMAX combines high wear resistance with corrosion resistance. It polishes beautifully and can be hardened to 60+ on the Rockwell Hardness Scale. It is capable of producing highly complex blade geometries for knives with great strength and hardness—and great style. As an environmental bonus, the powdered steel process produces very little scrap material. The Speedform II (model 3550) features an ELMAX blade.

## SANDVIK 14C28N

Developed in a Partnership Between Kershaw and Sandvik Steel

Kershaw worked with Sandvik Steel, one of the world’s leading manufacturers of stainless steel and special alloys, to produce this high-performance steel. Increased nitrogen in the formula enables 14C28N to provide both excellent corrosion resistance and the ability to be hardened to 58-60 Rockwell. Sandvik calls 14C28N the overall highest performing knife steel in the world that still maintains the productivity benefit of being fine-blankable. (See the glossary for a definition.)

## 8CR13MOV

You may have heard that 8CR13MoV stainless is basically the equivalent of AUS8A. And it’s true. For everyday use, even a serious “knife knut” would be hard-pressed to tell the difference between a well-made 8CR13MoV blade and a well-made AUS8A blade. Nevertheless, there are slight differences in the steel formula. While most other components are relatively equal, 8CR13MoV has slightly more carbon for hardness and wear resistance and slightly less nickel. The key to blade performance for both of these steels is manufacturing quality. That’s where Kershaw’s expertise comes in. Kershaw precision heat-treats 8CR13MoV steel to bring out its best high-performance characteristics: the ability to take and hold an edge, strength, and hardness. 8CR13MoV is top-of-the-line Chinese steel and, we believe, offers our customers an excellent value.



And here's a list of the other advanced and high-value steels used by Kershaw:

**D2**  
"Semi-stainless" tool steel known for excellent wear resistance and good toughness

**420**  
Very stain resistant and tough, but somewhat "softer;" Kershaw uses this steel in handle liners rather than blades

**420 Modified**  
Highly stain and wear resistant, but more ductile; excellent for use where "flex" is desirable, for example, fish fillet knives

**440C**  
With heat treatment, attains excellent strength, hardness, and wear resistance

**AUS6A**  
High-quality Japanese stainless steel; provides good wear resistance, toughness, and the ability to take an edge

**AUS8A**  
With slightly more carbon than AUS6A, it offers strength, hardness, and wear resistance

**8Cr13MoV** See opposite page

**ATS-34**  
High-performance steel that holds an edge extremely well; fairly tough, moderately stain resistant

**154CM**  
Almost identical with ATS-34; heat treatment will affect the characteristics of both these steels enormously; Kershaw's technical expertise brings out the best in these steels

**ZDP189**  
Premium Japanese powdered steel with incredible hardness and edge-holding ability

**Crucible CPM S30V**  
All-around premium knife steel that takes and holds an edge extremely well; also extremely tough and wear resistant

**3V**  
A very tough steel with excellent wear resistance and good stain resistance; when it does stain, it may pit rather than surface rust

**Sandvik 14C28N** See opposite page

**Uddeholm ELMAX** See opposite page

**Uddeholm Vanax 35**  
A high-nitrogen powdered steel that forms extremely small and hard vanadium/chromium nitrides; it offers corrosion resistance the equal of austenitic stainless, a hardness of 60+ Rockwell, extreme wear resistance and edge retention

**Uddeholm Vanax 75**  
A new, advanced high-nitrogen stainless steel and an evolution of Vanax 35; it has high levels of chromium and vanadium for high resistance to corrosion, excellent wear resistance, and toughness. In cutting applications Vanax 75 has proven up to five times the wear resistance of other high-performance steels

**1.4116**  
A quality German steel that is highly stain resistant, tough, and corrosion resistant

# COMPOSITE BLADE TECHNOLOGY GET TWO STEELS IN ONE BLADE



Kershaw's revolutionary Composite Blade technology enables us to design a blade with no compromises. We can use premium steel designed for wicked edge retention on the blade's cutting edge and steel designed for superior strength along the spine. And since the premium edge steels we're using tend to be rather expensive, making the entire blade from such "exotic" steels could make them cost prohibitive for many knife enthusiasts. Our patent-pending Composite Blade technology makes it affordable for most everyone to own a truly amazing knife.

To make a Composite Blade, Kershaw laser-cuts two interlocking blade components, one from each of the two types of steel that will eventually form the blade. The shapes can be simple or very complex. Then the two blade components are permanently joined through a metallurgical technique called brazing. The narrow copper line you see between the two blade components is the brazed joint. Is copper strong enough to permanently join steel to steel? In a word, yes. In fact, a brazed joint can be as strong or stronger than the metals it is joining. By annealing the blade to homogenize the grain structure and composition of the copper with that of the two steels being joined, Kershaw is able to produce extremely high-strength brazed joints in our Composite Blade knives.

# KERSHAW HANDLE MATERIALS

Just as Kershaw matches the particular steel's characteristics to the end use and design of the knife, we also match the knife's handle material to its function and style. Many Kershaw handle scales are made of G-10 (see Glossary), which offers good looks, lightweight, and excellent strength. If we're trying to reduce a knife's weight, we might use aluminum handles. Sporting knives, which are often handled under wet conditions, might feature grippy co-polymer or Santoprene® handles.

Kershaw handle materials include: • G-10 • stainless steel • glass-filled nylon • titanium • carbon fiber • anodized aluminum • P.O.M. • steel with ABS inlay • Santoprene® • anodized aluminum with Trac-Tec inserts • Micarta® • co-polymer • plastic

See glossary for more information on these handle materials.

# STEEL CHART

STEEL	CARBON	CHROMIUM	COBALT	COPPER	MANGANESE	MOLYBDENUM	NICKEL	NITROGEN	PHOSPHORUS	SILICON	SULPHUR	TUNGSTEN	VANADIUM	HRC
D-2	1.40-1.60	11.00-13.00	-	-	0.60	0.70-1.20	0.30	-	-	0.60	-	-	1.10	57-61
420	0.15	12.00-14.00	-	-	1.00	-	-	-	0.04	1.00	0.03	-	-	52-56
420 MODIFIED	0.40-0.50	12.00-14.00	-	-	0.80	0.60	-	-	0.05	1.00	0.02	-	0.18	54-56
440C	0.95-1.20	16.00-18.00	-	-	1.00	0.75	-	-	0.04	1.00	0.03	-	-	58-60
AUS6A	0.55-0.65	13.00-14.50	-	-	1.00	-	0.49	-	0.04	1.00	0.03	-	0.10-0.25	57-58
AUS8A	0.70-0.75	13.00-14.50	-	-	0.50	0.10-0.30	0.49	-	0.04	1.00	0.03	-	0.10-0.25	58-59
8CR13MOV	0.80	13.00	-	-	0.40	0.15	0.20	-	0.02	0.50	0.01	-	0.10	58-60
154CM	1.05	14.00	-	-	0.50	4.00	-	-	-	0.30	-	-	-	59-61
ZDP189	3.00	20.00	-	-	1.00	0.75	-	-	0.04	1.00	0.03	-	-	64-67
CPM S30V	1.45	14.00	-	-	-	2.00	-	0.20	-	-	-	-	4.00	57-59
CPM 10V	2.45	5.25	-	-	0.50	1.30	-	-	-	0.90	0.07	-	9.75	56-58
CPM 3V	0.80	7.50	-	-	-	1.30	-	-	-	-	-	-	2.75	58-60
14C28N	0.62	14.00	-	-	-	0.55	-	0.08	0.030	0.25	0.015	-	-	58-60
ELMAX	1.70	18.00	-	-	0.30	1.00	-	-	-	0.80	-	-	3.00	58-62
VANAX 35	0.20	20.00	-	-	0.30	2.50	-	1.90	-	0.30	-	-	2.80	58-60
VANAX 75	0.20	21.20	-	-	0.30	1.30	-	4.20	-	0.30	-	-	9.00	58-60
1.4116	0.50	14.50	-	-	1.00	0.65	-	-	-	1.00	-	-	0.15	55-57



# KERSHAW BLADE COATINGS

If you've ever had a knife with a coated blade that looked cool when you first got it, but not so hot after just a year of use, you'll understand why Kershaw chooses the coating technologies it does. Because they last.

## DLC COATING

Kershaw was one of the first to use DLC (Diamond-Like Carbon) coating in production knife applications. DLC stands for Diamond-Like Carbon and, indeed, DLC coatings display properties similar to those of a natural diamond, notably hardness, wear resistance, and reduced friction. The benefits of such a coating are obvious when it comes to knives.

The DLC coating is applied in a process called Physical Vapor Disposition (PVD). During PVD, metals are instantly evaporated and ionized via a high-current, low-voltage arc. The metal ions are then accelerated into a vacuum chamber. A negative voltage is introduced, which permanently deposits a thin metal coating on the blades.

## TITANIUM CARBO-NITRIDE

Kershaw also uses titanium carbo-nitride to produce an attractive black or gray blade coating that increases the blade's hardness, helps maintain the edge, and increases the overall lifetime of the blade.

## TITANIUM OXIDE

When oxygen is introduced into the PVD process, the result is Kershaw's spectacular "rainbow" finishes. The Rainbow Chive, Scallion, and Leek all feature this amazing multicolored finish. And like our other PVD coatings, it won't scratch off.

## ANODIZING

Anodizing is another process Kershaw uses to add durable color our products. Generally, we anodize aluminum handles to create lightweight handles that are still brilliantly colored. Some of our Leeks, our Blurs, are all examples of anodized aluminum finishes. Anodizing changes the microscopic texture of the surface so that a porous coating or film can be applied that will in turn accept a dye. Anodizing makes aluminum stronger and anodic films are much longer lasting than other surface colorations.

## BLACK OXIDE

A chemical bath converts the surface of the steel to magnetite. Kershaw uses this coating on some blades and pocket clips, mainly for appearance, though it does add some corrosion resistance.

# GLOSSARY

**Ability to take an edge** Some steels just take a sharper edge than others. Fine-grained steels take an edge more easily than coarse-grained ones.

**ABS inlay** Acrylonitrile butadiene styrene (ABS) is a common thermoplastic. It combines strength and rigidity with the toughness of rubber. Inlaid in steel handles, it also offers non-slip grip characteristics.

**Alloy** A mixture of two or more metals in solution; the atoms of one replace or occupy spaces between the atoms of the other so that the materials are inextricably joined.

**Ambidextrous** Able to use both left and right hands with equal ease. In relation to knives, it means that the knife is usable by both left and right-handers with equal ease.

**Aluminum** Kershaw uses 6061-T6 aerospace aluminum to create some of our knife handles. This aluminum combines high strength with workability, corrosion resistance, and good acceptance of applied coatings.

**Anodized aluminum** Anodizing changes the microscopic texture of the surface of the aluminum so that a porous coating or film can be applied that will in turn accept a dye. Anodizing makes aluminum stronger and anodic films are much longer lasting than other surface colorations. Anodized aluminum knife handles are highly scratch resistant and fade resistant.

**Belly** The deeply convex-curved part of the blade, often found in skinning knives and multi-tasking knives.

**Bolster** The junction between the handle and the knife blade. A thick bolster can serve as a safety feature; it also contributes to knife balance.

**Carbide** A hard material made of compacted carbon and heavy metals used to make metal-cutting tools. Kershaw uses a carbide tip as a glass-breaker in some of our rescue tools.

**Carbon fiber** A strong, lightweight weave of bonded carbon atoms. Kershaw occasionally uses it in handle scales; a premium material.

**Choil** The start of the cutting edge. The choil is unsharpened and can be decoratively shaped.

**Clip-point blade** A blade shape in which the blade is clipped off at a straight or slightly curved concave angle to the point. Provides a thin, aggressive point, yet sheaths easily.

**Computer Numerical Controlled (CNC) machining** Adds dimension to a knife blade or handle and enhances performance. CNC machines can be programmed to execute a precise series of machining operations that can result in the production of some of the complex components of a knife. Kershaw was one of the pioneers in mainstreaming the production of 3D-machined knives. We chose to use CNC machines because they give us the flexibility to create the complex part geometries that some of our knife designs require. CNC also gives us the ability to create just a few pieces for limited-run products or thousands of pieces for knives we produce in high quantities.

**Co-polymer** A polymer is a large molecule composed of repeating structural units and can be either synthetic or natural. A co-polymer is a compound of two or more different molecules, chosen for specific characteristics. The co-polymers Kershaw uses for knife handles generally have a slightly rubbery texture to improve grip security.

**Corrosion resistance** the ability of steel to resist deterioration through reaction with elements in its surrounding environment.

**DLC Coating** Diamond-Like Carbon coating; a coating that displays properties similar to those of natural diamond, including hardness, wear resistance, and reduced friction. Kershaw uses it to enhance the performance of knife blades and produce an attractive finish.

**Drop forging** a process by which a knife blade is made by forcing hot steel into a metal die.

**Drop-point blade** a very common blade style providing a strong, convenient point and easy sheathing; very common in hunting blades and work knives.

**Edge retention** the ability of a steel to resist abrasion and wear so that the edge stays sharper longer.

**Ergonomics** the design science of making products comfortable and efficient for human use.

**Fine blanking** manufacturing process that uses high-precision tools to fabricate a knife blade (or other



part) to a shape very near to its final dimensions. Fine-blanked blades need little grinding or re-shaping.

**Flipper** Unlike SpeedSafe®, there is no torsion bar. Instead, flipper opening is kinetic. Apply finger pressure to the flipper and the knife opens quickly and easily. Kershaw's silky operation and precision fit and finish enable our flipper knives to open with ease, even without a mechanical assist.

**Full tang knife** A knife which is built of one solid piece of blade steel from tip to butt; scales are usually attached to form the handle.

**G-10** An epoxy-filled woven glass fiber; it is extremely stable, unaffected by temperature changes, and can be decoratively tinted, ground, and polished. G-10 makes excellent handles and handle scales for knives.

**Glass-filled nylon** Nylon synthetic polymer is reinforced with glass threads for increased strength, stiffness, and dimensional stability combined with excellent wear resistance.

**Hardenability** The ability of a steel to be hardened by heat treatment.

**Hardness** Like strength, hardness is a measure of resistance to deformation. The Rockwell Hardness Scale numbers that you often see in our specs refer to the relative hardness of metals determined by the depth of penetration into the metal by a steel ball or diamond cone.

**Heat treatment** A controlled heating and cooling process designed to improve the physical properties and characteristics of the steel. Tempering, annealing, and quenching are all forms of heat treatment.

**Impact resistance** The ability of a

material to resist cracking or breaking due to sudden impact.

**Inclusions** Non-metallic particles that can either form naturally during the steel-making process or can accidentally get into steel. These inclusions can affect the steel's quality; the fewer the inclusions, the cleaner and higher quality the steel.

**Inset liner lock** To build an inset liner lock, Kershaw insets a strip of steel inside a knife's handle—most commonly when the handle is G-10 or glass-filled nylon. Insetting the lock in this way enables us to create a slimmer knife, while still providing the strength and security of a locking liner.

**Lanyard hole** A hole in the butt end of the knife to enable the user to attach a cord or lanyard.

**Left/right-hand carry pocketclip** The knife handles on some models are drilled for both left and right hand clip carry allowing the clip to be mounted on either side of the handle and thus ideal for both left- and right-handed knife users.

**Lock back** A pivoted latch connected to a spring and positioned on the back of a knife handle. It locks the blade open. To close the knife, depress the latch to release the blade.

**Locking liner** On a folding knife, the liners are the flat plates that support the handle sides, bolsters, spine, and blade pivot. In a locking liner, as the blade is opened, one of the liners moves behind the blade to hold it in the open position. This prevents the knife from accidentally closing. To close the knife, the locking liner must be pushed to the side and the blade folded back into the handle.

**Micarta®** An industrial laminate composed of layers of fiber

embedded in a resin and subjected to heat and high-pressure to make the material extremely hard and dense. The material has industrial and decorative applications.

**PMMA Plastic** Polymethyl methacrylate is strong and lightweight material, familiar to most people as acrylic glass. It has good impact strength and is highly versatile.

**POM** Polyoxymethylene-Delrin® (POM) is a rigid, high-strength engineering plastic. It is often used in food applications as it offers extremely low moisture absorption, high-impact resistance, and is very easy to clean.

**Recurve blade** A blade with a concave curve off the choil that flows into a deep belly. A recurve blade is built for multi-tasking, offering minimal mass, and maximum performance. It provides leverage for tough cutting tasks and a precisely centered point for piercing.

**Rockwell Hardness Scale** A measurement of the hardness of a material based on the depth of penetration of a diamond cone pressed into the material at a constant pressure.

**Santoprene™** A high-performance elastomer that offers flexibility and low compression with the manufacturing ease of thermoplastics. It has a dry, silky feel for a secure grip.

**Safety Tip-Lock** A small slider that locks the tip of the blade in the handle until the user releases it. It is available on a number of our SpeedSafe® models.

**Scales** The pieces of material that are fitted to the tang of a full-tang knife or to the liners of a folding knife. There are a wide variety of handle materials available from natural, such as wood and bone, to manmade, such as G-10.

**Sheepsfoot/Warnecliffe blade** A blade with a fairly straight cutting edge with the spine rounded down to meet the point. It is a very strong design for bearing down on a cutting chore.

**Spearpoint blade** A blade that is sharpened on both top and bottom, generally used as weapons.

**SpeedSafe®** Kershaw's patented manual assisted-opening system; the user starts the blade out of the handle, then the SpeedSafe® torsion bar takes over to fully open the knife.

**Stain resistance** The "stainless" in stainless steel; this is its ability to withstand rust.

**Strength** is the ability to take a load without permanently deforming. When it comes to steel, strength is directly related to hardness. The harder the steel, the stronger it is.

**Sub-Frame® Lock** Kershaw uses the Sub-Frame Lock to create an extremely sturdy locking frame in our lightweight anodized aluminum or G-10 handles. This enables us to make a larger knife that is still light enough to carry every day. One side of the handle is fitted with an inset plate of stainless steel. The stainless-steel plate is integral to the frame and is the part of the frame that moves into place behind the blade to secure it. Release the Sub-Frame Lock just as you would any other frame lock.

**Tanto/modified tanto blade** a blade with two edges, the bottom cutting edge and a shorter edge angled from the point. Good for punching and multi-purpose use. Knifemakers modify the tanto blade in numerous ways for both style and function.

**Tempering** slow, steady heating of steel, followed by a slow cooling phase;

this heating and cooling helps relieve stress in the steel to strengthen it.

**Tensile strength** the ability of steel to resist breakage by stretching.

**Tip-up/Tip-down carry** this refers to the position in which a folding pocketknife is carried when clipped to the pocket: with the closed tip pointing up or down. Many Kershaw knives offer the ability to reverse the clip for either method of carry.

**Titanium** a lightweight, corrosion-resistant metal with high tensile strength. Often used as handle materials, for liners, or as a blade coating, where it enhances performance.

**Toughness** the ability of the steel to withstand shock loading without damage; the opposite of brittleness. In a blade, higher toughness means less chipping or cracking. Toughness can be lost in very hard steel, although heat treatment can be used to improve toughness in a hard steel.

**Trac-Tec** A rough-surfaced insert that provides additional friction for a non-slip grip.

**Wear resistance** the ability of the steel to withstand abrasion.



# PROUD MEMBERS OF AKTI



As members of the board of the American Knife & Tool Institute, we strongly support the AKTI's mission of "Keeping Knives in American Lives." The AKTI is a non-profit organization that represents all segments of the knife industry. It is a reliable source of information about the industry, legislation that could affect the industry and knife owners, as well as educational information about the history and future of edged tools.

Find out more about AKTI at [www.AKTI.org](http://www.AKTI.org)

# SUSTAINABILITY



While knife manufacturing isn't on the top of anybody's list of "ultra-green" industries, Kershaw employs strategies that reduce our use of non-recyclable materials, help us efficiently reuse the materials we can, and recycle as much as possible.

Naturally, knife manufacturing requires the cutting and grinding of large quantities of steel. Our CNC-machining process, for example, generates piles of metal shavings, which we collect and recycle. In fact, all our scrap metal is collected and either reused or sent to a reliable recycler.

To cut down on our use of petroleum products, we collect and reuse both the oil and the coolant our cutting and grinding machines require. Even the metal-laden sludge from the grinding process is separated from the coolant and recycled. And, of course, our manufacturing facilities use fluorescent light bulbs and we recycle both bulbs and batteries.

Packaging is one area in which Kershaw is making strides this year (see inside front cover for details). Our new Natralock® package reduces plastic use and increases recyclability. Even this catalog is printed on paper that is certified by the Forest Sustainability Council for adhering to the highest social and environmental standards. In the same way that Kershaw is dedicated to state-of-the-art technology in the manufacture of our knives, we are also dedicated to becoming more and more efficient —so we can make a lighter impact on our environment.

# BLADE INDEX

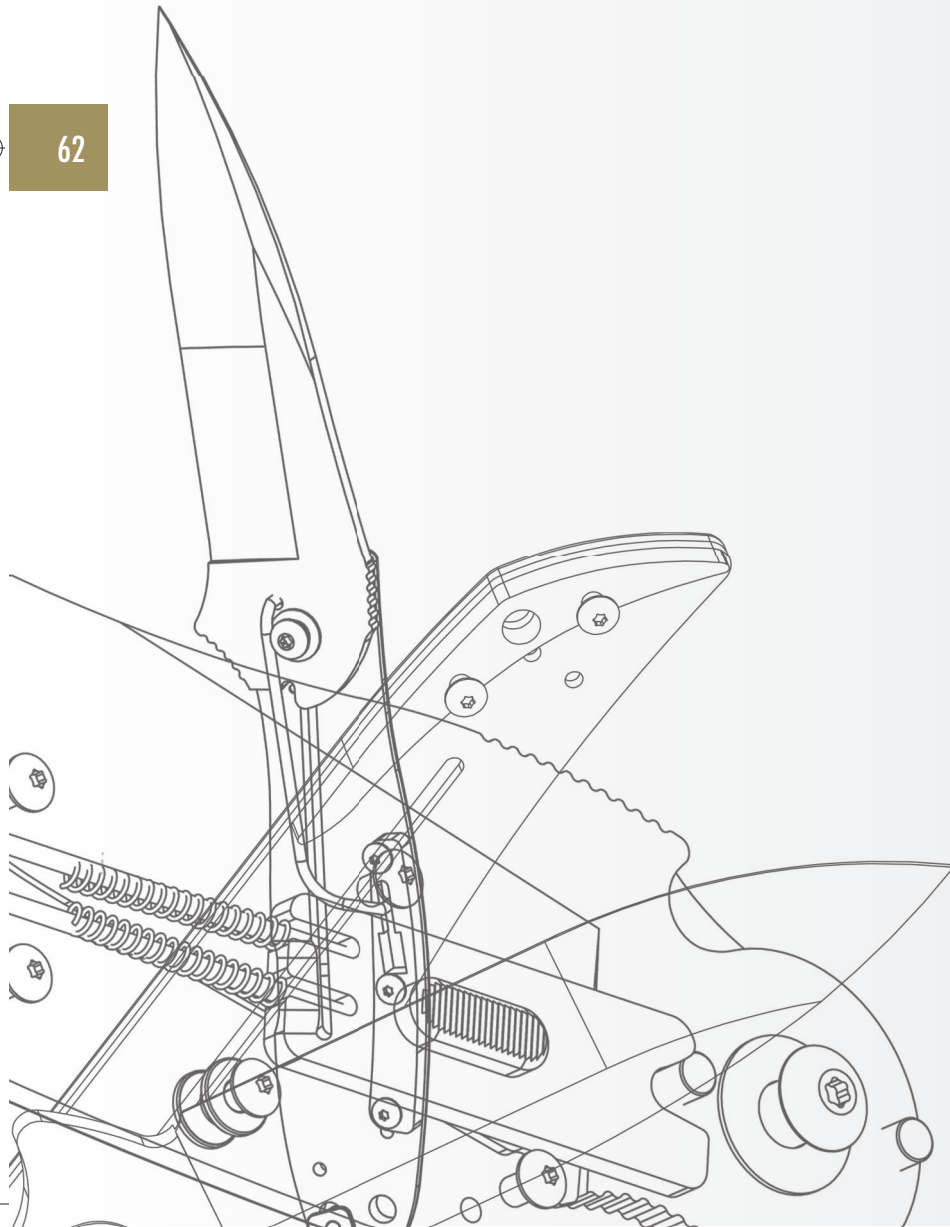
MODEL/NAME PG#	1530 G-10 Hawk 17	1870 Knockout 6
1006K Amphibian 43	1550 Blackout 31	1880 Echelon 6
1008 Sea Hunter 43	1555TI Cryo 8	1920 Select Fire 37
1008BL-P Sea Hunter (Blunt-Tip) 43	1560 Whirlwind 31	1930 Asset 32
1010 Roughneck 41	1600 Chive 21	1940 Compound 32
1018 Camp Ax 46	1600BLK Black Chive 20	1950 Tremor 33
1019 Fire Starter 46	1600PINK Pink Chive 21	1960 Drone 33
1028 Antelope Hunter II 40	1600SS Polished Chive 20	1970 Burst 9
1028OR Orange Antelope Hunter II 40	1600VIB Rainbow Chive 20	1980ST RJII 9
1029 Bear Hunter II 40	1605 Clash 33	1985ST RJ 9
1045 Black Colt II 36	1605CKTST Black Clash 10	1990 Brawler 9
1050 Folding Field 38	1620 Scallion 21	2520 Zipit 41
1060 Black Horse II 36	1620BL Blue Scallion 22	2520OR Orange Zipit 41
1060RT Camo Black Horse II 40	1620C Camo Scallion 39	2535 Ultra-Tek Sharpener 47
1077 Camp 10 13	1620FL Scallion (Framelock) 22	2555 Taskmaster Saw 13
1080 Skinning Knife 39	1620GRN Green Scallion 22	2800 Silver Spur 35
1080OR Orange Skinning Knife 39	1620PINK Pink Scallion 22	2825 Silver Spur II 35
1080ORRMEF RMEF Skinning Knife 41	1620RD Red Scallion 22	3000 D.W.O. 38
1081 Mini Skinner 15	1620VIB Rainbow Scallion 22	3000RD Red D.W.O. 38
1082 Field Knife 39	1620YL Yellow Scallion 15	3100 Grant County 35
1082OR Orange Field Knife 39	1655 Vapor III 18	3115 Corral Creek 35
1085 Diskin Hunter 15	1655BLK Black Vapor III 13	3115BT Corral Creek Sheepsfoot 35
1091CT Camp-Tool Blade Trader 45	1655RMEF RMEF Vapor III 41	3120 Black Gulch 35
1094HBT Hunter's Blade Trader 44	1660 Leek 24	3140 Wildcat Ridge 35
1095SBT Sportsman's Blade Trader 44	1660BB Aluminum Leek 24	3140WRRMEF RMEF Wildcat Ridge 41
1096FBT Fisherman's Blade Trader 45	1660CB Composite Leek 25	3160 Crown 37
1098AK Alaskan Blade Trader 44	1660CKT Black Leek 25	3200 Ripcord 35
1099DBT Deluxe Blade Trader 45	1660G10 G-10 Leek 25	3410 Chill 17
1120 Taskmaster Shears 46	1660PINK Pink Leek 23	3420 Nerve 18
1210 Skeeter I 42	1660TGRYST Random Leek 23	3550 Speedform II 16
1215 Skeeter II 42	1660VIB Rainbow Leek 24	3650 Volt II 34
1256 Folding Fillet 42	1670BLK Black Blur 30	3650CKTST Volt II 10
1257 7-1/2 IN. Fillet 42	1670DSBLK Desert Sand Blur 7	3650RMEF RMEF Volt II 41
1259 9 IN. Fillet 42	1670GBBLKST Black Blur, Glassbreaker 7	3655 Volt SS 8
1280 10 IN. Curved Breaking 46	1670OLBLK Olive Drab Blur 7	3700 Kurai 12
1280GE 10 IN. Breaking Knife, Granton Edge 14	1670RD Red Blur 30	4351 Military Knife 37
1281 4-1/2 IN. Spoon-Handle Gutting Knife 46	1670S30V S30V Blur 30	8000GRY Charcoal Funxion Outdoor 11
1282 12 IN. Cimenter 46	1670TLBKST Tanto Blur 30	8000OL Funxion Outdoor 11
1285 4-3/4 IN. Herring Knife 46	1725CB Junkyard Dog II 16	8100GRYST Funxion EMT 11
1286 6 IN. Narrow Fillet 46	1730SS Zing SS 8	8200GRY Charcoal Funxion DIY 11
1287 7-1/2 IN. Narrow Fillet 46	1760 Skyline 17	8200RD Funxion DIY 11
1288BK 8 IN. Breaking Knife 14	1770 OD-2 18	9900 Kitchen Cutlery Series 49
1288SH 8-1/2 IN. Spoon-Handle Fillet 14	1780CB Rake 19	9900-7 9900 Block Set 50
1289 9 IN. Narrow Fillet 46	1790 Turbulence 19	9922-7 Steak Knife Set 50
1445 Half-Ton 36	1820 Needs Work 32	CB-3 Cutting Board Set 50
1446 3/4 Ton 12	1830 Oso Sweet 34	T TOOL Key Chain T-Tool 47
1447 One Ton 12	1835TLBKST Kuro 10	Z997 Knife Storage Bag 47
1515 Random Task II 31	1840 Shallot 23	
	1840CKT Black Shallot 23	
	1860 Piston 7	



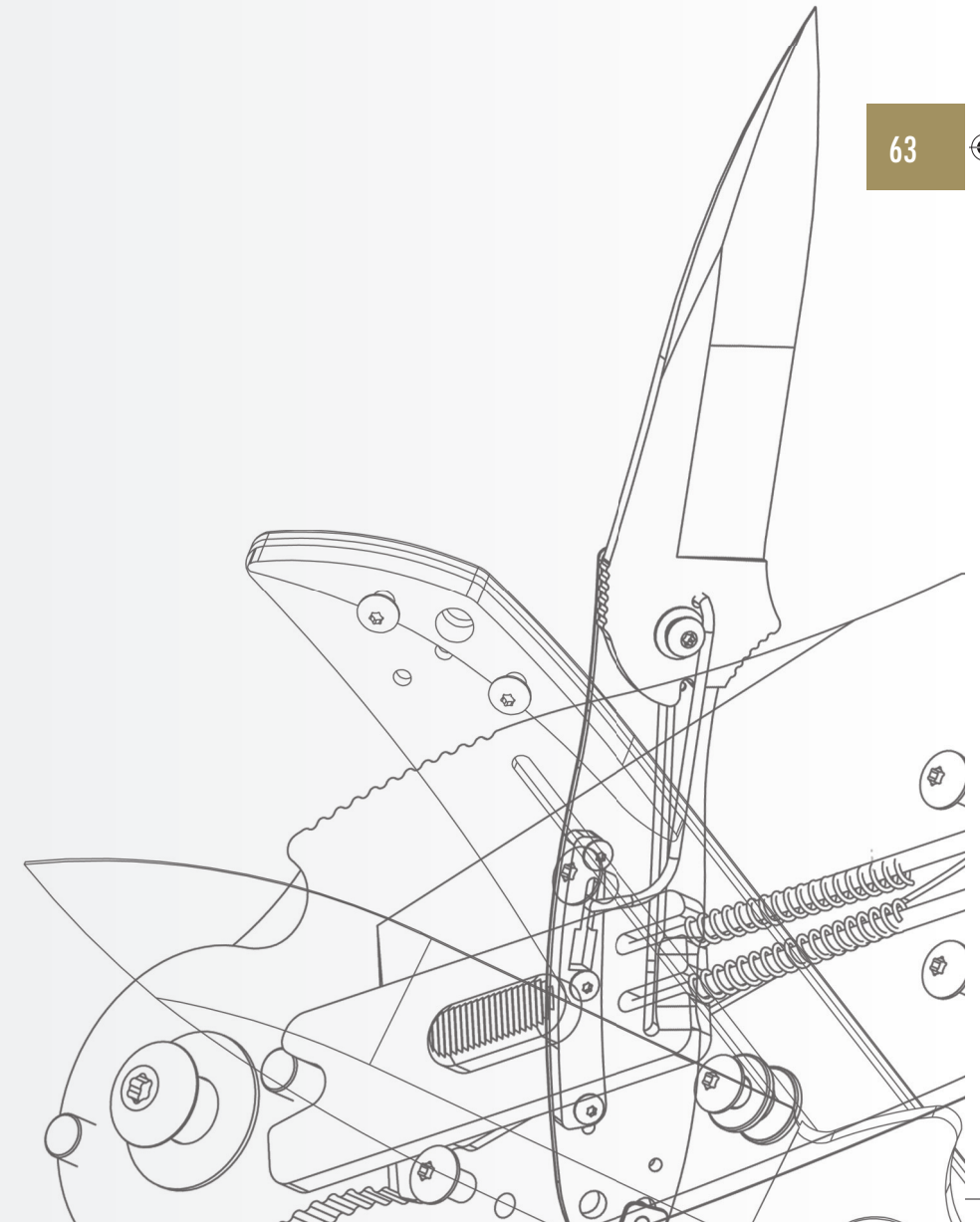
# NOTES

# NOTES

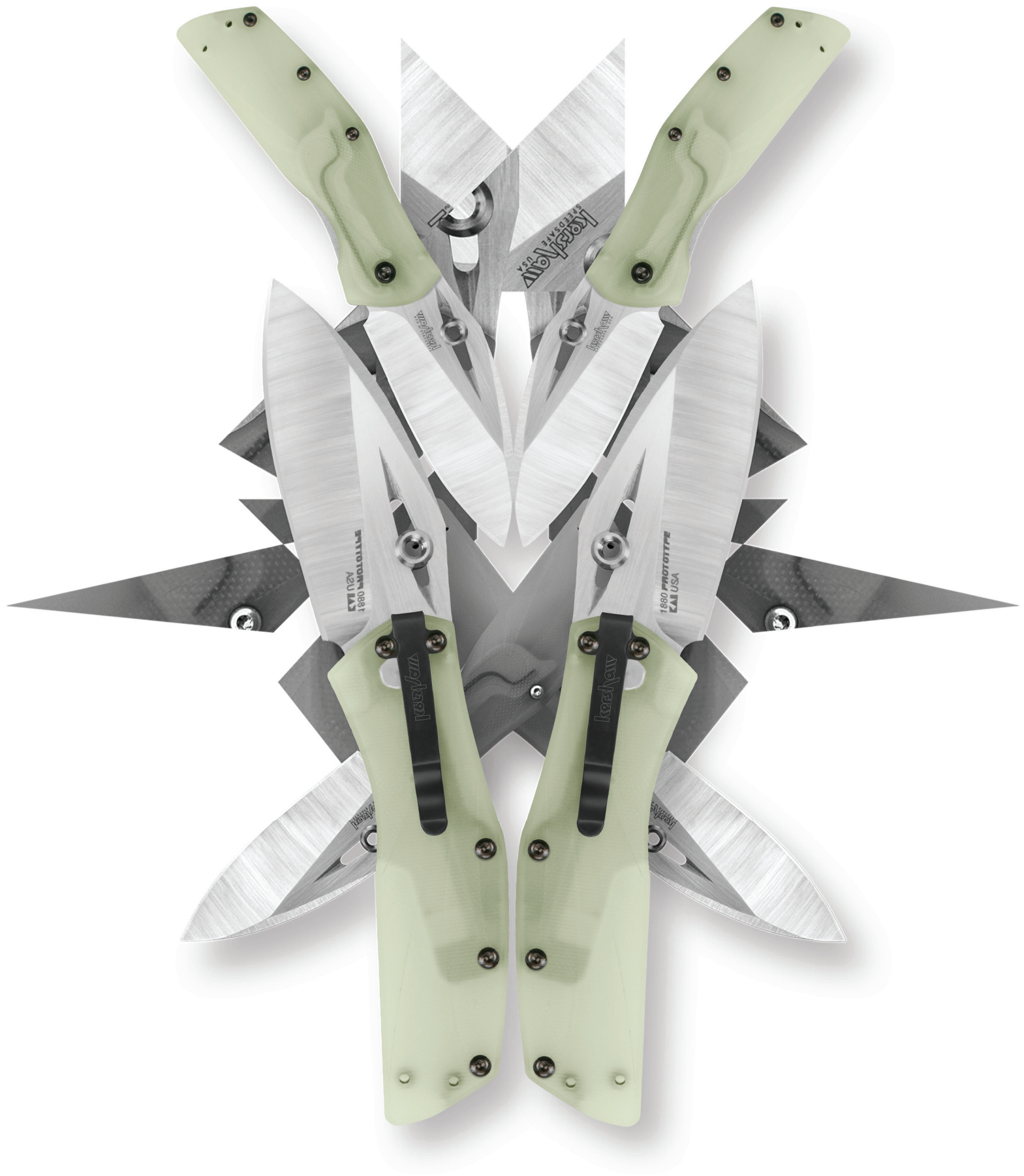
62



63







## Kai U.S.A. Ltd.

18600 SW Teton Ave Tualatin, OR 97062  
Toll-Free (800) 325-2891  
503-682-1966 • Fax 503-682-7168  
LITCAT2012 • Printed in the USA