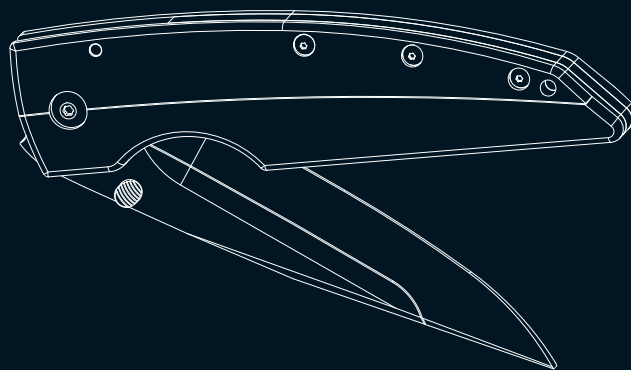


KAI USA Ltd.
18600 SW Teton Avenue
Tualatin, Oregon 97062
Phone: (503) 682-1966
Fax: (503) 682-7168

kershaw®
K N I V E S



2010CATALOG

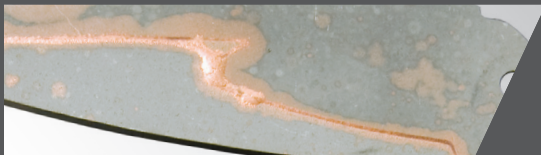
kershaw
K N I V E S

Kershaw Knives is especially known for innovative technologies and materials, including SpeedSafe® assisted opening and our new 3rd generation powdered steel composite blades. Here's what's new at Kershaw right now:

NEW COMPOSITE-BLADE TECHNOLOGY

Kershaw's newest use of powdered-steel technology is in our award-winning composite-blade series. Because powdered steel is molded rather than cut into shape, we can make extremely complicated blades easily. To make a composite blade, we create interlocking blade components of two different steels then permanently join them.

This enables us to use premium steel designed for edge retention on the cutting edge and steel designed for strength along the spine. The result is the best of both worlds—a blade that stays sharp where a knife needs to be sharp and stays strong where a knife needs to be strong.



Brazing joins the blade components. The join is as strong or stronger than the metals being joined.

ADVANCED BLADE STEELS

Kershaw chooses blade steel based on a variety of criteria, from ability to hold an edge and corrosion resistance to strength, toughness, and value. The steel is matched to the function of the knife, the blade design, and the angle to which the blade will be sharpened—among other knifemaker's considerations. Our newest high-performance steels include:

ELMAX® AND BÖHLER M390 MICROCLEAN®—3rd generation powdered steels. In addition to having virtually no non-metallic inclusions, they are capable of producing highly complex blade geometries. Both can be hardened to 60+ on the Rockwell scale.

SANDVIK 14C28N—Kershaw has upgraded all knives previously made with Sandvik 13C26N steel to Sandvik 14C28N. Increased nitrogen in the steel formula enables this exclusive Sandvik-Kershaw collaboration to provide excellent corrosion resistance and hardness.

HIGH-TECH BLADE COATINGS

If you've ever had a knife with a coated blade that looked cool when you first got it, but not so hot after just a year of use, you'll understand why Kershaw chooses the coating technologies it does: because they last.



TUNGSTEN DLC (DIAMOND-LIKE CARBON) COATING

Displays properties similar to natural diamond: hardness, wear resistance, and reduced friction.



TITANIUM CARBO-NITRIDE

An attractive black coating that increases a blade's hardness, helps maintain the edge, and increases the overall blade life.



TITANIUM OXIDE

Produces Kershaw's spectacular "rainbow" finishes.



ANODIZED ALUMINUM

Creates durable, lightweight handles that are still brilliantly colored.

KEY ST - partial serration PC - pocket clip RPC - reversible pocket clip DS - display stand ZC - zipper case GT - gift tin SH - sheath SS - storage case

NEW



Composite Blade



Composite Blade



Composite Blade



NAME	MODEL	STEEL	HANDLE	LOCK	BLADE	CLOSED	WT.	INCL.	MSRP
SPEEDFORM	3500	Composite: Uddeholm ELMAX®/Crucible CPM-D2	CNC-machined Titanium	Frame lock	3-3/8 in.	4-3/4 in.	5.2 oz.	PC	\$249.95
VOLT	3600	Composite: Böhler M390 / Crucible CPM-D2	CNC-machined 6AL 4V Titanium/G-10	Frame lock	3-3/4 in.	4-3/4 in.	4.8 oz.	PC	\$299.95
OCC 10TH ANNIV.	1000	Composite: Crucible CPM-D2/Sandvik 14C28N	CNC-machined G-10	Locking liner	3-7/8 in.	4-7/8 in.	4.0 oz.	DPI	\$249.95
TANTO ZING	1735T/1735TST	Sandvik 14C28N stainless steel	Injection-molded Polyimide®	Locking liner	3 in.	3-7/8 in.	3.1 oz.	RPC	\$64.95
SALVO	2445/ 2445ST	Sandvik 14C28N stainless steel	410 stainless steel with Trac-Tec inserts	Frame lock	3-1/4 in.	4-3/8 in.	4.0 oz.	PC	\$59.95

NEW

KEY ST - partial serration PC - pocket clip RPC - reversible pocket clip DS - display stand ZC - zipper case GT - gift tin SH - sheath SS - storage case



NAME	MODEL	STEEL	HANDLE	LOCK	BLADE	CLOSED	WT.	INCL.	MSRP
SELECT FIRE	1920	8CR13MoV stainless steel	Glass-reinforced nylon	Locking liner	3-3/8 in.	4-1/4 in.	5.0 oz.	PC	\$34.95
CHILL	3410/3410ST	8CR13MoV stainless steel	CNC-machined G-10	Locking liner	3-1/8 in.	3-7/8 in.	2.0 oz.	PC	\$29.95
NERVE	3420/3420ST	8CR13MoV stainless steel	CNC-machined G-10	Locking liner	3-1/8 in.	4-3/8 in.	3.8 oz.	PC	\$39.95
SCAMP	2710	Titanium carbonitride-coated 8C13MoV stainless steel	CNC-machined G-10	Frame lock	3-3/8 in.	4-5/8 in.	4.5 oz.	PC	\$34.95
HALF TON	1445	8CR13MoV stainless steel	Glass-reinforced nylon, Santoprene® inserts	Locking liner	2-1/2 in.	3-5/8 in.	3.2 oz.	PC	\$19.95

KEY ST - partial serration PC - pocket clip RPC - reversible pocket clip DS - display stand ZC - zipper case GT - gift tin SH - sheath SS - storage case

FLIPPERS



NAME	MODEL	STEEL	HANDLE	LOCK	BLADE	CLOSED	WT.	INCL.	MSRP
OD-1	1775	Sandvik 14C28N stainless steel	Textured G-10 front & 410 stainless-steel back	Frame lock	2-15/16 in.	4-1/8 in.	3.4 oz.	PC	\$79.95
OD-2	1770	Sandvik 14C28N stainless steel	Glass-filled nylon	Locking liner	2-1/4 in.	3-1/8 in.	1.4 oz.	PC	\$29.95
ENER-G	1740	Sandvik 14C28N stainless steel	Textured G-10	Locking liner	2-13/16 in.	3-3/4 in.	2.2 oz.	PC	\$89.95
ENER-G	1740BLK	Sandvik 14C28N stainless steel with Tungsten DLC coating	Textured G-10	Locking liner	2-13/16 in.	3-3/4 in.	2.2 oz.	PC	\$99.95
ENER-G II	1745	Sandvik 14C28N stainless steel	Textured G-10	Locking liner	3-1/2 in.	4-3/4 in.	4.9 oz.	PC	\$99.95
ENER-G II	1745BLK	Sandvik 14C28N stainless steel with Tungsten DLC coating	Textured G-10	Locking liner	3-1/2 in.	4-3/4 in.	4.9 oz.	PC	\$109.95
TANTO GROOVE	1730TBLK	Sandvik 14C28N stainless steel w/ 3-D machined grooves and Tungsten DLC coating	410 stainless steel with Tungsten DLC coating and G-10 overlays	Frame lock	3-1/2 in.	4-1/2 in.	4.2 oz.	PC	\$99.95
GROOVE	1730	Sandvik 14C28N stainless steel with 3-D machined grooves	410 stainless steel with textured G-10 overlays	Frame lock	3-1/2 in.	4-1/2 in.	5.2 oz.	PC	\$94.95

FLIPPERS

KEY ST - partial serration PC - pocket clip RPC - reversible pocket clip DS - display stand ZC - zipper case GT - gift tin SH - sheath SS - storage case



NAME	MODEL	STEEL	HANDLE	LINER	LOCK	BLADE	CLOSED	WT.	INCL.	MSRP
ORANGE ZING	1735OR	Sandvik 14C28N stainless steel, 3-D machined grooves	Injection-molded Polyimide®	410 stainless steel	Locking liner	3 in.	3- 7/8 in.	3.1 oz.	RPC	\$64.95
ZING	1735	Sandvik 14C28N stainless steel with 3-D machined grooves	Injection-molded Polyimide®	410 stainless steel	Locking liner	3 in.	3- 7/8 in.	3.1 oz.	RPC	\$64.95
SKYLINE	1760	Sandvik 14C28N stainless steel with stonewashed finish	Textured G-10	410 stainless steel	Locking liner	3- 1/8 in.	4-1/4 in.	2.3 oz.	PC	\$54.95
LAHAR	1750	VG-10 stainless steel	Textured G-10	410 stainless steel	Locking liner	3-1/2 in.	4-7/8 in.	5.5 oz.	PC	\$99.95
JUNKYARD DOG II	1725BLK/1725BLKST	Sandvik 14C28N stainless steel	Textured G-10	410 stainless steel	Locking liner	3- 3/4 in.	4- 7/8 in.	5.2 oz.	PC	\$84.95
JUNKYARD DOG II	1725CB	Composite: Sandvik 14c28n/CPM-D2	Textured G-10	410 stainless steel	Locking liner	3- 3/4 in.	4- 7/8 in.	5.2 oz.	PC	\$119.95
R.A.M.	1910CKT/ 1910CKTST	Sandvik 14C28N stainless steel, Tungsten DLC coating	6061-T6 anodized aluminum, G-10 overlay		Hawk Lock®	3- 1/8 in.	4- 3/8 in.	3.8 oz.	RPC	\$109.95
R.A.M.	1910/1910ST	Sandvik 14C28N stainless steel	6061-T6 anodized aluminum, G-10 overlay		Hawk Lock®	3- 1/8 in.	4- 3/8 in.	3.8 oz.	RPC	\$99.95

KEY ST - partial serration PC - pocket clip RPC - reversible pocket clip DS - display stand ZC - zipper case GT - gift tin SH - sheath SS - storage case

SPEEDSAFE



NAME	MODEL	STEEL	HANDLE	LOCK	BLADE	CLOSED	WT.	INCL.	MSRP
RAINBOW CHIVE	1600VIB	420HC stainless steel with Titanium oxide multi-colored coating	410 stainless steel with Titanium oxide multi-colored coating	Frame lock	1-15/16 in.	2-7/8 in.	1.9 oz.	PC, GT	\$79.95
POLISHED CHIVE	1600SS	420HC stainless steel with highly polished finish	410 stainless steel, mirror polished finish	Frame lock	1-15/16 in.	2-7/8 in.	1.9 oz.	PC, ZC	\$64.95
BLACK CHIVE	1600BLK	420HC stainless steel with Tungsten DLC polished coating	410 stainless steel, polished Tungsten DLC coating	Frame lock	1-15/16 in.	2-7/8 in.	1.9 oz.	PC, GT	\$84.95
CHIVE	1600	420HC stainless steel	410 stainless steel	Frame lock	1-15/16 in.	2-7/8 in.	1.9 oz.	PC	\$54.95
PINK CHIVE	1600PINK	420HC stainless steel	6061-T6 anodized aluminum	Locking liner	1-15/16 in.	2-7/8 in.	1.9 oz.	PC	\$59.95
SCALLION	1620BL(PINK) (GRN)(RD)	420HC stainless steel	6061-T6 anodized aluminum	Locking liner	2-1/4 in.	3-1/2 in.	2.3 oz.	PC	\$64.95
SCALLION	1620VIB	420HC stainless steel with Titanium oxide multi-colored coating	410 stainless steel with Titanium oxide multi-colored coating	Frame lock	2-1/4 in.	3-1/2 in.	2.3 oz.	PC, ZC	\$89.95
SCALLION	1620/1620ST	420HC stainless steel	Injection-molded Polyimide®	Locking liner	2-1/4 in.	3-1/2 in.	2.3 oz.	PC	\$57.95

SPEEDSAFE

KEY ST - partial serration PC - pocket clip RPC - reversible pocket clip DS - display stand ZC - zipper case GT - gift tin SH - sheath SS - storage case



NAME	MODEL	STEEL	HANDLE	LOCK	BLADE	CLOSED	WT.	INCL.	MSRP
SCALLION	1620FL/1620FLST	420HC stainless steel	410 stainless steel	Frame lock	2- 1/4 in.	3- 1/2 in.	2.3 oz.	PC	\$59.95
RAINBOW LEEK	1660VIB/ 1660VIBST	Sandvik 14C28N stainless steel, Titanium-oxide multi-colored coating	410 stainless steel, Titanium-oxide multi-colored coating	Frame lock	3 in.	4 in.	3.0 oz.	PC, ZC	\$99.95
RANDOM LEEK	1660TGRYST	S30V stainless steel, Tungsten DLC Coating	410 stainless steel, Tungsten DLC Coating	Frame lock	3 in.	4 in.	3.0 oz.	PC	\$135.00
LEEK	1660CB	Composite: Sandvik 14C28N/CPM-D2	410 stainless steel	Frame lock	3 in.	4 in.	2.9 oz.	PC	\$99.95
LEEK	1660BB	Sandvik 14C28N stainless steel	6061-T6 anodized black/blue smoked aluminum	Locking liner	3 in.	4 in.	2.4 oz.	PC	\$74.95
LEEK	1660BR	Sandvik 14C28N stainless steel	6061-T6 anodized black/red smoked aluminum	Locking liner	3 in.	4 in.	2.4 oz.	PC	\$74.95
LEEK	1660/ 1660ST	Sandvik 14C28N stainless steel	410 stainless steel	Frame lock	3 in.	4 in.	3.0 oz.	PC	\$69.95
LEEK	1660CKT/1660CKST	Sandvik 14C28N stainless steel, Tungsten DLC coating	410 stainless steel, Tungsten DLC coating	Frame lock	3 in.	4 in.	3.0 oz.	PC	\$84.95

KEY ST - partial serration PC - pocket clip RPC - reversible pocket clip DS - display stand ZC - zipper case GT - gift tin SH - sheath SS - storage case

SPEEDSAFE



NAME	MODEL	STEEL	HANDLE	LOCK	BLADE	CLOSED	WT.	INCL.	MSRP
LEEK	1660G10	S30V stainless steel	Textured G-10	Locking liner	3 in.	4 in.	2.6 oz.	PC	\$135.00
PINK LEEK	1660PINK	Sandvik 14C28N stainless steel	6061-T6 anodized aluminum	Locking liner	3 in.	4 in.	2.4 oz.	PC	\$74.95
WHIRLWIND	1560/1560ST	Sandvik 14C28N stainless steel	Injection-molded Polyimide®	Locking liner	3-1/4 in.	4-1/2 in.	3.5 oz.	PC	\$79.95
BLACKOUT	1550/1550ST	Sandvik 14C28N stainless steel, Tungsten DLC coating	Injection-molded Polyimide®	Locking liner	3-1/4 in.	4-1/2 in.	3.5 oz.	PC	\$89.95
SHALLOT	1840/1840ST	Sandvik 14C28N stainless steel	410 stainless steel	Frame lock	3-1/2 in.	4-3/8 in.	4.2 oz.	PC	\$79.95
BLACK SHALLOT	1840CKT/ 1840CKTST	Sandvik 14C28N stainless steel, Tungsten DLC coating	410 stainless steel, Tungsten DLC coating	Frame lock	3-1/2 in.	4-3/8 in.	4.2 oz.	PC	\$94.95
BABY BOA	1585BR	Sandvik 14C28N stainless steel, mirror polished finish	6061-T6 anodized aluminum	Locking liner	2 in.	2-3/4 in.	1.7 oz.	PC	\$74.95
S30V BLUR	1670S30V	S30V stainless steel, stonewashed finish	6061-T6 anodized aluminum, Trac-Tec inserts	Locking liner	3-3/8 in.	4-1/2 in.	4.0 oz.	PC	\$139.95

SPEEDSAFE

KEY ST - partial serration PC - pocket clip RPC - reversible pocket clip DS - display stand ZC - zipper case GT - gift tin SH - sheath SS - storage case



NAME	MODEL	STEEL	HANDLE	LINER	LOCK	BLADE	CLOSED	WT.	INCL.	MSRP
TANTO BLUR	1670TBLKST	Sandvik 14C28N stainless steel, Tungsten DLC coating	6061-T6 anodized aluminum, Trac-Tec inserts	410 stainless steel	Locking liner	3-3/8 in.	4-1/2 in.	4.0 oz.	PC	\$99.95
BLACK BLUR	1670BLK/1670BLKST	Sandvik 14C28N stainless steel, Tungsten DLC coating	6061-T6 anodized aluminum, Trac-Tec inserts	410 stainless steel	Locking liner	3-3/8 in.	4-1/2 in.	4.0 oz.	PC	\$99.95
BLUR	1670RD	Sandvik 14C28N stainless steel	6061-T6 anodized aluminum, Trac-Tec inserts	410 stainless steel	Locking liner	3-3/8 in.	4-1/2 in.	4.0 oz.	PC	\$94.95
OCC LEEK	1660OCC	Sandvik 14C28N stainless steel, Tungsten DLC coating, OCC logo	6061-T6 anodized aluminum, laser-cut 304 stainless-steel web overlay	410 stainless steel	Locking liner	3 in.	4 in.	3.1 oz.	PC, GT	\$94.95
OCC BLUR	1670OCC	Sandvik 14C28N stainless steel	6061-T6 anodized aluminum, 3-D machined web, OCC logo	410 stainless steel	Locking liner	3-3/8 in.	4-1/2 in.	4.2 oz.	PC, GT	\$114.95
PACKRAT	1665/1665ST	Sandvik 14C28N stainless steel	Textured G-10	410 stainless steel	Locking liner	3-1/4 in.	4-1/8 in.	4.2 oz.	PC	\$89.95
NEEDS WORK	1820	Sandvik 14C28N stainless steel	Injection-molded Polyimide®	410 stainless steel	Locking liner	3 in.	4-1/8 in.	3.5 oz.	PC	\$59.95
OSO SWEET	1830	8CR13MoV stainless steel	Injection-molded glass-filled nylon	410 stainless steel	Liner lock	3-1/2 in.	4-3/8 in.	4.2 oz.	PC	\$39.95



NAME	MODEL	STEEL	HANDLE	LOCK	BLADE	CLOSED	WT.	INCL.	MSRP
RESPONDER	1078YL	8CR13MoV stainless steel, Teflon® coating	Double-injection-molded Santoprene®, carbide glass-breaker tip	n/a	3-3/8 in. partially serrated	8-3/4 in. overall	4.8 oz.	SH	\$49.95
RESPONDER	1078	8CR13MoV stainless steel, Teflon® coating	Double-injection-molded Santoprene®	n/a	3-3/8 in. partially serrated	8-3/4 in. overall	4.8 oz.	SH	\$44.95
RESCUE BLUR	1675BLKST	Sandvik 14C28N stainless steel, Tungsten DLC coating	6061-T6 anodized aluminum, Trac-Tec inserts and carbide glass-breaker tip	Locking liner	3-3/8 in. blunt tip	4-1/2 in.	4.0 oz.	SH	\$104.95
RESCUE BLUR	1675RDST	Sandvik 14C28N stainless steel	6061-T6 anodized aluminum, Trac-Tec inserts and carbide glass-breaker tip	Locking liner	3-3/8 in. blunt tip	4-1/2 in.	4.0 oz.	SH	\$99.95

TACTICAL

KEY ST - partial serration PC - pocket clip RPC - reversible pocket clip DS - display stand ZC - zipper case GT - gift tin SH - sheath SS - storage case



NAME	MODEL	STEEL	HANDLE	BLADE	CLOSED	WT.	INCLUDES	MSRP
RIPCORD	3200	Sandvik 14C28N stainless steel, Tungsten DLC coating	6061-T6 anodized aluminum, Trac-Tec inserts	3-7/16 in.	4-3/8 in.	4.2 oz.	SH with deployment knob	\$109.95
WHIPLASH	4355	8CR13MoV stainless steel with Titanium carbonitride coating	Injection-molded glass-filled nylon overlay, built-in lanyard	4-1/2 in.	9 in. overall	6.4 oz.	SH	\$59.95
MILITARY KNIFE	4351	One-piece, drop-forged 1.4116 German stainless steel	POM	4-1/2 in.	9 in. overall	4.4 oz.	SH with strap system	\$64.95

KEY ST - partial serration PC - pocket clip RPC - reversible pocket clip DS - display stand ZC - zipper case GT - gift tin SH - sheath SS - storage case

WORK KNIVES



NAME	MODEL	STEEL	HANDLE	LOCK	BLADE	CLOSED	WT.	INCL.	MSRP
D.W.O.	3000(BL)(PINK)(OR)(RD)	8CR13MoV stainless steel	Injection-molded co-polymer	Lock back	2-3/8 in.	3-1/4 in.	1.6 oz.	PC	\$19.95
BLACK COLT II	1045	8CR13MoV stainless steel	Injection-molded co-polymer	Lock back	3 in.	4-1/8 in.	3.5 oz.	SH	\$29.95
BLACK HORSE II	1060	8CR13MoV stainless steel	Injection-molded co-polymer	Lock back	3-3/4 in.	4-7/8 in.	4.6 oz.	SH	\$34.95
GRANT COUNTRY	3100	8CR13MoV stainless steel	Stainless steel, ABS inlay	Lock back	1-7/8 in.	1-7/8 in.	1.2 oz.		\$24.95
CORRAL CREEK	3115	8CR13MoV stainless steel	Stainless steel, ABS inlay	Lock back	2-1/2 in.	3-3/8 in.	2.2 oz.		\$29.95
CORRAL CREEK SHEEPSFOOT	3115BT	8CR13MoV stainless steel	Stainless steel, ABS inlay	Lock back	2-1/2 in.	3-3/8 in.	2.2 oz.		\$29.95
BLACK GULCH	3120	8CR13MoV stainless steel	Stainless steel, ABS inlay	Lock back	3 in.	4-1/8 in.	4.3 oz.	SH	\$34.95
WILDCAT RIDGE	3140	8CR13MoV stainless steel	Stainless steel, ABS inlay	Lock back	3-1/2 in.	4-7/8 in.	4.3 oz.	SH	\$39.95

CLASSIC KERSHAW

KEY ST - partial serration PC - pocket clip RPC - reversible pocket clip DS - display stand ZC - zipper case GT - gift tin SH - sheath SS - storage case



NAME	MODEL	STEEL	HANDLE	LOCK	BLADE	CLOSED	WT.	MSRP
LFK	1700	8CR13MoV stainless steel	Anodized aluminum	Locking liner	2-1/8 in.	3 in.	1.1 oz.	\$19.95
WHISKEY GAP	4100	AUS6A stainless steel	Satin-finished bolsters, rosewood inlay	Lock back	2-1/4 in.	3-1/8 in.	1.9 oz.	\$66.95
WILD TURKEY	4150	AUS6A stainless steel	Satin-finished bolsters, rosewood inlay	Lock back	3-1/8 in.	3-7/8 in.	2.2 oz.	\$69.95
DOUBLE CROSS	4380	AUS6A stainless steel	Polished bolsters, stamina wood inlay	Locking liner	2-3/8 in./1-7/8 in.	3-1/2 in.	2.2 oz.	\$79.95
DOUBLE DUTY	4390	AUS6A stainless steel	Polished bolsters, stamina wood inlay	Locking liner	2-3/4 in./2-5/8 in.	4-1/8 in.	3.1 oz.	\$89.95
SHOTGUN SHELL	12GAD	AUS6A stainless steel	Rosewood, brass bolster	none	2 in. knife/ 2 in. screwdriver/file	2-5/8 in.	1.2 oz.	\$49.95

KEY ST - partial serration PC - pocket clip RPC - reversible pocket clip DS - display stand ZC - zipper case GT - gift tin SH - sheath SS - storage case

CLASSIC KERSHAW



NAME	MODEL	STEEL	HANDLE	LOCK	BLADE	CLOSED	WT.	MSRP
SQUAW CREEK	2150	AUS6A stainless steel	Satin-finish, rosewood inlay	Lock back	2 in.	2-5/8 in.	1.4 oz.	\$64.95
INDIAN FORD	2155	AUS6A stainless steel	Satin-finish, rosewood inlay	Lock back	2-5/8 in.	3-1/2 in.	2.7 oz.	\$69.95
SILVER SPUR	2800	AUS6A stainless steel	Aluminum	Lock back	1-7/8 in.	2-1/2 in.	0.6 oz.	\$29.95
SILVER SPUR II	2825	AUS6A stainless steel	Aluminum	Lock back	2-1/4 in.	3 in.	0.9 oz.	\$35.95
STAINLESS	5000	420J2 stainless steel	420 stainless steel	Lock back	1-3/4 in.	2-1/4 in.	1.1 oz.	\$19.95
STAINLESS	5200S	420J2 stainless steel	420 stainless steel	Lock back	2-3/8 in.	3 in.	1.7 oz.	\$22.95

MULTI-FUNCTION TOOLS



1002X



1004NBX



1001BLK

NAME	MODEL/	STEEL	HANDLE	LOCK	BLADE	CLOSED	WT.	MSRP
MINI BINER	1002X, 1002BLX, 1002RDX, 1002SLX	420J2 stainless steel	Anodized aluminum	n/a	2 in.	2-3/4 in.	0.8 oz.	\$16.95
CARABINER TOOL	1004NBX, 1004BLX, 1004RDX, 1004SLX	8CR13MoV stainless steel	Teflon® coated aluminum	Locking liner	3-1/4 in.	4-1/8 in.	2.7 oz.	\$29.95
TWOCAN	1001BLK, 1001BL, 1001RD, 1001	420J2 stainless steel	Anodized aluminum	n/a	1-1/2 in. scissors, 1-1/8 in. blade	2-3/4 in.	0.9 oz.	\$34.95

KEY ST - partial serration PC - pocket clip RPC - reversible pocket clip
DS - display stand ZC - zipper case GT - gift tin SH - sheath SS - storage

FISHING & WATER SPORTS



NAME	MODEL	STEEL	HANDLE	BLADE	OVERALL WT.	INCL.	MSRP
SEA HUNTER	1008	420J2 stainless steel	Injection-molded neon plastic, co-polymer over-mold	3-3/4 in. partially serrated	7-3/4 in.	3.0 oz. Kydex® SH, leg straps	\$49.95
SEA HUNTER	1008BL-P	420J2 stainless steel	Injection-molded neon plastic, co-polymer over-mold	3-1/2 in. blunt-tip, partially serrated	7-5/8 in.	3.0 oz. Kydex® SH, leg straps	\$49.95
AMPHIBIAN	1006K	420J2 stainless steel	420J2 stainless steel, co-polymer insert	3-3/4 in., partially serrated	7-3/4 in.	3.2 oz. Kydex® SH, leg straps	\$54.95
7-1/2" FILLET	1270X	420J2 stainless steel	Injection-molded plastic	7-1/2 in.	12-1/4 in.	2.2 oz. black ABS SH	\$12.95
6" FILLET	1250X	420J2 stainless steel	Injection-molded plastic	6 in.	10-7/8 in.	3.5 oz. black ABS SH	\$9.95

FISHING & WATER SPORTS

KEY ST - partial serration PC - pocket clip RPC - reversible pocket clip
DS - display stand ZC - zipper case GT - gift tin SH - sheath SS - storage



NAME	MODEL	STEEL	HANDLE	BLADE	LENGTH	WT.	INCL.	MSRP
7" FILLET	1257	420J2 stainless steel	Co-polymer, neon orange accent	6 in.	13-1/8 in.	5.6 oz.	black ABS SH	\$26.95
9" FILLET	1259	420J2 stainless steel	Co-polymer, neon green accent	9-1/4 in.	14-1/4 in.	3.8 oz.	black ABS SH	\$29.95
FOLDING FILLET	1256X	420J2 stainless steel	Injection-molded plastic, spoon	6 in.	13-1/8 in.	5.6 oz.	lanyard hole, spoon	\$29.95
7-STEP FILLET	1240	420J2 stainless steel	Injection-molded plastic	Adjusts from 5-1/2 in. - 9 in.		3.2 oz.	black ABS SH	\$29.95
SKEETER I	1210	Stainless steel	Soft-grip over-mold		4-1/4 in.	0.8 oz.		\$21.95
SKEETER II	1215	Stainless steel	Soft-grip over-mold		4-1/4 in.	.0.8 oz.		\$21.95

KEY ST - partial serration PC - pocket clip RPC - reversible pocket clip DS - display stand ZC - zipper case GT - gift tin SH - sheath SS - storage case

HUNTING



NAME	MODEL	STEEL	HANDLE	LOCK	BLADE	CLOSED	WT.	INCL.	MSRP
CAMO BLACK HORSE II	1060ART	8CR13MoV stainless steel	Co-polymer, RealTree® Hardwoods HD	Lock back	3-3/4 in.	4-7/8 in.	4.6 oz.	RealTree® SH	\$39.95
CAMO ECHO	1070C	8CR13MoV stainless steel	Injection-molded reinforced nylon, RealTree® Hardwoods HD		4 in.	8-5/8 in. overall	4.8 oz.	Real Tree® laminated leather SH	\$44.95
CAMO WHIRLWIND	1560RMEF	Sandvik 14C28N stainless steel	Injection-molded Polyimide® Hardwoods HD	Locking liner	3-1/4 in.	4-1/2 in.	3.5 oz.	PC	\$84.95
CAMO SCALLION	1620C	420HC stainless steel	6061-T6 anodized aluminum, Real Tree® Hardwoods HD	Locking liner	2-1/4 in.	3-1/2 in.	2.3 oz.	PC	\$64.95
ROUGHNECK	1010	AUS6A stainless steel	Injection-molded co-polymer, red accent	n/a	6-1/4 in., partially serrated spine	11-1/8 in. overall	6.3 oz.	leather SH	\$59.95
ELK SKINNER II	1078GH	8CR13MoV stainless steel	Double-injection-molded Santoprene®	n/a	3-3/4 in., gut-hook	8-3/4 in. overall	4.7 oz.	black nylon SH	\$44.95

HUNTING

KEY ST - partial serration PC - pocket clip RPC - reversible pocket clip DS - display stand ZC - zipper case GT - gift tin SH - sheath SS - storage case



NAME	MODEL	STEEL	HANDLE	LOCK	BLADE	OVERALL	WT.	INCLUDES	MSRP
ANTELOPE HUNTER II	1028	8CR13MoV stainless steel	Injection-molded co-polymer	n/a	3-5/8 in.	8 in.	3.6 oz.	harness-leather SH	\$29.95
BEAR HUNTER II	1029	8CR13MoV stainless steel	Injection-molded co-polymer	n/a	4-1/2 in.	9-1/2 in.	5.3 oz.	harness-leather SH	\$34.95
ANTELOPE HUNTER II	1028OR	8CR13MoV stainless steel	Injection-molded co-polymer	n/a	3-5/8 in.	8 in.	3.6 oz.	harness-leather SH	\$29.95
ZIPIT	2520X	420J2 stainless steel	Rubber insert	n/a	1/2 in.	3-3/4 in.	1.6 oz.		\$12.95
ZIPIT	2520OR	420J2 stainless steel	Rubber insert	n/a	1/2 in.	3-3/4 in.	1.6 oz.		\$12.95
NORTHSIDE HUNTER	1090	8CR13MoV stainless steel	Injection-molded Santoprene®	Mid lock	4-1/2 in.	4-7/8 in.	4.7 oz.	black nylon SH	\$29.95
NORTHSIDE HUNTER	1090GH	8CR13MoV stainless steel	Injection-molded Santoprene®	Mid lock	4-1/2 in.	4-7/8 in.	4.7 oz.	black nylon SH	\$29.95

KITCHEN



NAME	MODEL	BLADE	MSRP
HONING STEEL	9990	9 in. (22.9cm)	\$39.95
SLICING	9970	9 in. (22.9cm)	\$29.95
BREAD	9960	8 in. (20.3cm)	\$27.95
CHEF'S	9945	8 in. (20.3cm)	\$44.95
SANTOKU	9950	7 in. (17.8cm)	\$44.95
CHEF'S	9940	6 in. (15.2cm)	\$34.95

NAME	MODEL	BLADE	MSRP
BONING	9920	5-1/2 in. (14.0cm)	\$21.95
STEAK	9922	4-5/8 in. (11.8cm)	\$14.95
UTILITY	9921	4-5/8 in. (11.8cm)	\$14.95
PARING	9915	3-3/4 in. (9.5cm)	\$13.95
VEGETABLE	9910	3-1/4 in. (8.2cm)	\$13.95
PARING	9900	2-7/8 in. (7.3cm)	\$13.95

NAME	MODEL	INCL.	MSRP
3-KNIFE GIFT SET	9920-3	Paring, Utility, Boning	\$52.95
STEAK KNIFE SET	9922-7	6 Steak Knives, Wood Block	\$109.95
CUTTING BOARD SET	CB-3	Chef's, Paring, Cutting Board	\$79.95
BLOCK SET	9900-7	Chef's, Paring, Utility, Slicing, Sharpening Steel, Shears, Bamboo Block	\$224.95

KITCHEN



NAME	MODEL	BLADE	MSRP	NAME	MODEL	BLADE	MSRP	INCL.
CHEF'S	9547	6 in. (15.2cm)	\$37.95	TOMATO	9597	4-1/4 in. (10.8cm)	\$31.95	
CHEF'S	9548	8 in. (20.3cm)	\$49.95	PARING	9586	4 in. (10.3cm)	\$24.95	
BREAD	9581	8 in. (20.3cm)	\$37.95	VEGETABLE	9543	3-1/4 in. (8.2cm)	\$24.95	
SLICING	9582	8 in. (20.3cm)	\$37.95	BIRD'S BEAK	9542	2-3/4 in. (7.0cm)	\$24.95	
UTILITY	9589	5-1/2 in. (14.0cm)	\$31.95	BLOCK SET	9500-7		\$299.95	Paring, Utility, Tomato, 6" Chef's, Slicing, Honing Steel, Shears, Bamboo Block

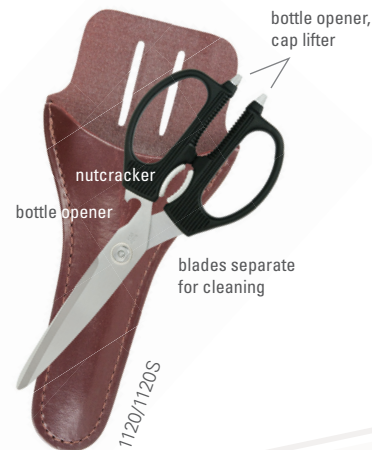
KITCHEN



NAME	MODEL	BLADE	MSRP	NAME	MODEL	BLADE	MSRP	NAME	MODEL	BLADE	MSRP	INCL.
CHEF'S	AB5066	8 in. (20.3cm)	\$12.50	BREAD	AB5062	8 in. (20.3cm)	\$12.50	CITRUS	AB1277	4 in. (10.2cm)	\$10.00	Knife stand
SLICING	AB5067	9 in. (22.9cm)	\$12.50	MULTI UTILITY	AB5061	6 in. (15.2cm)	\$10.00	TOMATO	AB2204	4 in. (10.2cm)	\$10.00	Knife stand
CHEF'S	AB5038	6-1/2 in. (16.5cm)	\$12.50	BAGEL/SANDWICH	AB5063	5-3/4 in. (14.6cm)	\$12.50	PARING	AB5068	3-1/2 in. (8.9cm)	\$10.00	Knife stand
SANTOKU	AB5065	6-1/2 in. (16.5cm)	\$12.50	FISH	AB5060	4-3/8 in. (11.1cm)	\$12.50	KOMACHI II 9 PIECE SET	ABS0900		\$128.00	Paring, Tomato, Citrus, Bagel/Sandwich, Multi Utility, Santoku, 8" Chef's, Bread, Storage Block
HG SANTOKU	AB5064	6-1/2 in. (16.5cm)	\$12.50									

OUTDOOR TOOLS

KEY ST - partial serration PC - pocket clip RPC - reversible pocket clip DS - display stand ZC - zipper case GT - gift tin SH - sheath SS - storage case



NAME	MODEL	STEEL	BLADE	LENGTH	WT.	INCL.	MSRP
CAMP AX	1018	High-carbon steel	3-1/2 in.	11 in.	14.5 oz.	SH	\$39.95
FIRE-STARTER	1019	Shaft – firesteel, striker – chrome-plated steel	Shaft: 3-1/2 in., striker: 2-3/4 in.	3-1/8 in.	1.1 oz.		\$17.95
OUTCAST	1079	D2 tool steel with Teflon® coating	10 in.	16 in.	22.0 oz.		\$129.95
FOLDING SAW	2550	Carbon saw steel	7 in.	16 in.	6.4 oz.		\$34.95
TASKMASTER SHEARS	1120/1120S	Stainless steel	3-1/2 in.	8-7/8 in.	5.1 oz.	SH w/1120S	\$39.95/\$49.95

KEY ST - partial serration PC - pocket clip RPC - reversible pocket clip DS - display stand ZC - zipper case GT - gift tin SH - sheath SS - storage case

OUTDOOR TOOLS



1120/1120S



1096FBTX



1099DBTX



1094HBTX



1095SBTX



1098AK

NAME	MODEL	STEEL	HANDLE	INTERCHANGEABLE BLADES	WT.	INCL.	MSRP
CAMP-TOOL TRADER	1091CT	420J2 stainless steel, saw steel	Co-polymer, red accent	Cook's: 6 in., Fillet: 6 in., Saw: 6 in., Spatula: 3-5/8 in., Spoon: 3-5/8 in., Fork: 3 in., Cutting Board: 10-3/4 in. x 8 in.	48.9 oz.	SS	\$84.95
HUNTER'S BLADE TRADER	1094HBTX	420J2 stainless steel, saw steel	Co-polymer, red accent	Hunting: 3-1/2 in., Saw: 6 in.	9.2 oz.	SH	\$44.95
FISHERMAN'S BLADE TRADER	1096FBTX	420J2 stainless steel	Co-polymer, red accent	Fillet A: 7 in., Fillet B: 9 in. partially serrated	8.9 oz.	SH	\$34.95
SPORTSMAN'S BLADE TRADER	1095SBTX	420J2 stainless steel, saw steel	Co-polymer, red accent	Hunting: 3-1/2 in., Saw: 6 in., Fillet: 6 in.	13.1 oz.	SH	\$49.95
DELUXE BLADE TRADER	1099DBTX	420J2 stainless-steel, saw steel	Co-polymer, red accent	Cook's: 6 in., Fillet: 6 in., Saw: 6 in., Carving: 3-5/8 in., Bread: 3-5/8 in., Utility: 3 in.	48.9 oz.	SS	\$74.95
ALASKAN BLADE TRADER	1098AK	AUS6A stainless steel, 420J2 stainless steel, saw steel	Co-polymer, red accent	Gut-Hook: 6 in., Hunting: 3-1/2 in., Saw: 6 in.	11.6 oz.	leather SH	\$69.95

ACCESSORIES

KEY ST - partial serration PC - pocket clip RPC - reversible pocket clip DS - display stand ZC - zipper case GT - gift tin SH - sheath SS - storage case



retracts with the
push of a button

2530X



2535



TTOOL



Z997



HAT1



HAT3

NAME	MODEL	STEEL	HANDLE	LENGTH	OVERALL	WT.	INCL.	MSRP
AUTO-TEK SHARPENER	2530X	600-grit diamond-impregnated steel	Double-injection-molded Santoprene®	3-1/8 in.	8 in.	3.4 oz.		\$19.95
ULTRA-TEK SHARPENER	2535	600-grit diamond-coated steel	Double-injection-molded Santoprene®	3-3/4 in.	9-1/2 in.	2.0 oz.		\$29.95
KEY CHAIN T-TOOL	TTOOL		Teflon®-coated aluminum	n/a	4 in.	0.7 oz.	#1 Phillips, T-6 & T-8	\$7.95
18 POCKET KNIFE STORAGE BAG	Z997	n/a	Nylon	n/a	n/a	12.0 oz.		\$29.95
BLACK HAT	HAT1	n/a	n/a	n/a	n/a	2.2 oz.		\$9.95
CAMO HAT	HAT2	n/a	n/a	n/a	n/a	2.2 oz.		\$12.95

LIABILITY DISCLAIMER

Kershaw Knives are intended and sold for legitimate sporting purposes only. The purchase, use, and ownership of knives are subject to a wide variety of local laws and regulations. Certain knife styles, blade designs, and blade lengths are not allowed in specific areas. In light of recent events involving national security, knives may not be permitted in government buildings or on government property (such as court houses, federal offices, national monuments, and airports), and government officials may take the position that knives are weapons under applicable laws. Due to the complexity and constantly changing nature of these laws and regulations, it is impossible for Kershaw Knives to be aware of every restriction in every location in which our knives may be sold or carried. It is the responsibility of the buyer to investigate and comply with the laws and regulations that apply in his or her specific area. You, and not Kershaw Knives, are solely responsible for any claims resulting from violation of these laws and/or regulations.

LIMITED LIFETIME WARRANTY

Kershaw products are guaranteed for the lifetime of the original owner to be free of defects when received from the factory. Any product we find to be defective in its original material, construction, or workmanship will be repaired or replaced with the same item or one of equal value at no charge. (Of course, normal wear, abuse such as prying with the knife, or neglect are excluded from this non transferable warranty.) For warranty service, please return product via UPS or insured mail. Include your name, address, telephone number, proof of purchase (sales slip), and a short explanation of the warranty service requested.

We reserve the right to change specifications or materials at any time without notice.

REDUCE, REUSE & RECYCLE

We manufacture many of our Kershaw brand products in a 55,000 sq. ft. facility in Tualatin, Oregon. In order to be as sustainable as possible, we recycle and reuse as many of the materials employed in the process as we can. Naturally, knife manufacturing requires the cutting and grinding of large quantities of steel. Yet all of our scrap metal is collected and either reused or sent to a reliable recycler. To cut down on our use of petroleum products, we collect and reuse the oil and the coolant from our cutting and grinding machines. And, of course, our facilities use fluorescent light bulbs and we recycle both bulbs and batteries. Just as we are dedicated to making the very best knives, we are also dedicated to becoming more and more efficient—so we can make a lighter impact on our environment.

KERSHAW STEEL CHART

What's the best steel? There's no such thing as one best type of steel for every type of knife. Instead, think in terms of the best steel for a particular application. Kershaw manufactures its knives from a variety of high-performance steels so we can match the steel's characteristics to the end-use of the knife.

STEEL	CARBON	CHROMIUM	COBALT	COPPER	MANGANESE	MOLYBDENUM	NICKEL	NITROGEN	PHOSPHORUS	SILICON	SULPHUR	TUNGSTEN	VANADIUM	HRC
D-2	1.40-1.50	11.00-13.00	-	-	0.60	0.70-1.20	0.30	-	-	0.60	-	-	1.10	57-61
420	0.15	12.00-14.00	-	-	1.00	-	-	-	0.04	1.00	0.03	-	-	52-56
420 MODIFIED	0.40-0.50	12.00-14.00	-	-	0.80	0.60	-	-	0.05	1.00	0.02	-	0.10	54-56
440A	0.85-0.95	16.00-18.00	-	-	1.00	0.75	-	-	0.04	1.00	0.03	-	-	55-57
440B	0.75-0.85	16.00-18.00	-	-	1.00	0.75	-	-	0.04	1.00	0.03	-	-	57-59
440C	0.85-1.20	16.00-18.00	-	-	1.00	0.75	-	-	0.04	1.00	0.03	-	-	58-60
AUS-6A	0.55-0.65	13.00-14.50	-	-	1.00	-	0.49	-	0.04	1.00	0.03	-	0.04-0.25	57-58
AUS-8A	0.70-0.75	13.00-14.50	-	-	0.50	0.10-0.20	0.49	-	0.04	1.00	0.03	-	0.04-0.26	58-59
86Cr13MOV	0.80	13.00	-	-	0.40	0.15	0.20	-	0.02	0.50	0.01	-	0.10	58-60
AUS-10	0.85-1.10	13.00-14.50	-	-	0.50	0.10-0.20	0.49	-	0.02	1.00	0.03	-	0.04-0.27	59-60
ATS-24	1.05	14.00	-	-	0.40	4.00	-	-	-	0.35	0.02	-	-	59-61
194CM	1.05	14.00	-	-	0.50	4.00	-	-	-	0.30	-	-	-	59-61
VG-10	0.85-1.05	14.50-15.50	1.30-1.50	-	0.50	0.90-1.20	-	-	-	0.60	-	-	0.04-0.30	60-62
ZDP-189	2.00	20.00	-	-	1.00	0.75	-	-	0.04	1.00	0.03	-	-	64-67
CPM S30V	1.45	14.00	-	-	-	2.00	-	0.20	-	-	-	-	4.00	57-59
CPM S35V	2.10	17.00	-	-	0.40	-	-	-	-	0.40	-	-	5.50	55-57
CPM S35V	2.30	14.00	-	-	-	1.00	-	-	-	-	-	-	9.00	56-58
CPM S10V*	2.80	14.00	2.00	-	3.50	-	-	-	-	-	-	-	9.00	56-60
CPM RW	2.45	5.25	-	-	0.50	1.30	-	-	-	0.30	0.07	-	9.75	56-58
CPM RW	0.80	7.50	-	-	-	1.30	-	-	-	-	-	-	2.75	58-60
SANDVIK 6202	0.08	13.00	-	-	-	0.70	-	-	0.025	0.40	0.01	-	-	58-60
SANDVIK 12C26	0.02	14.00	-	-	-	0.55	-	0.06	0.030	0.25	0.015	-	-	59-60