

**kershaw**

Kai Cutlery USA Ltd.





In 1974, we set out to do some innovative things in the cutlery business without compromising quality for volume. We backed our products with a no-hassle, no-time-limit guarantee. These principles haven't changed through the years.

We can offer such a strong guarantee only because of our tough quality controls all along the way, and our policy of sending our customers only what we ourselves would buy.

I see a great part of the satisfaction of our efforts in the mail we receive from users of Kershaw Knives—letter after letter thanking us for service that isn't generally found these days and a product that exceeded their expectations.

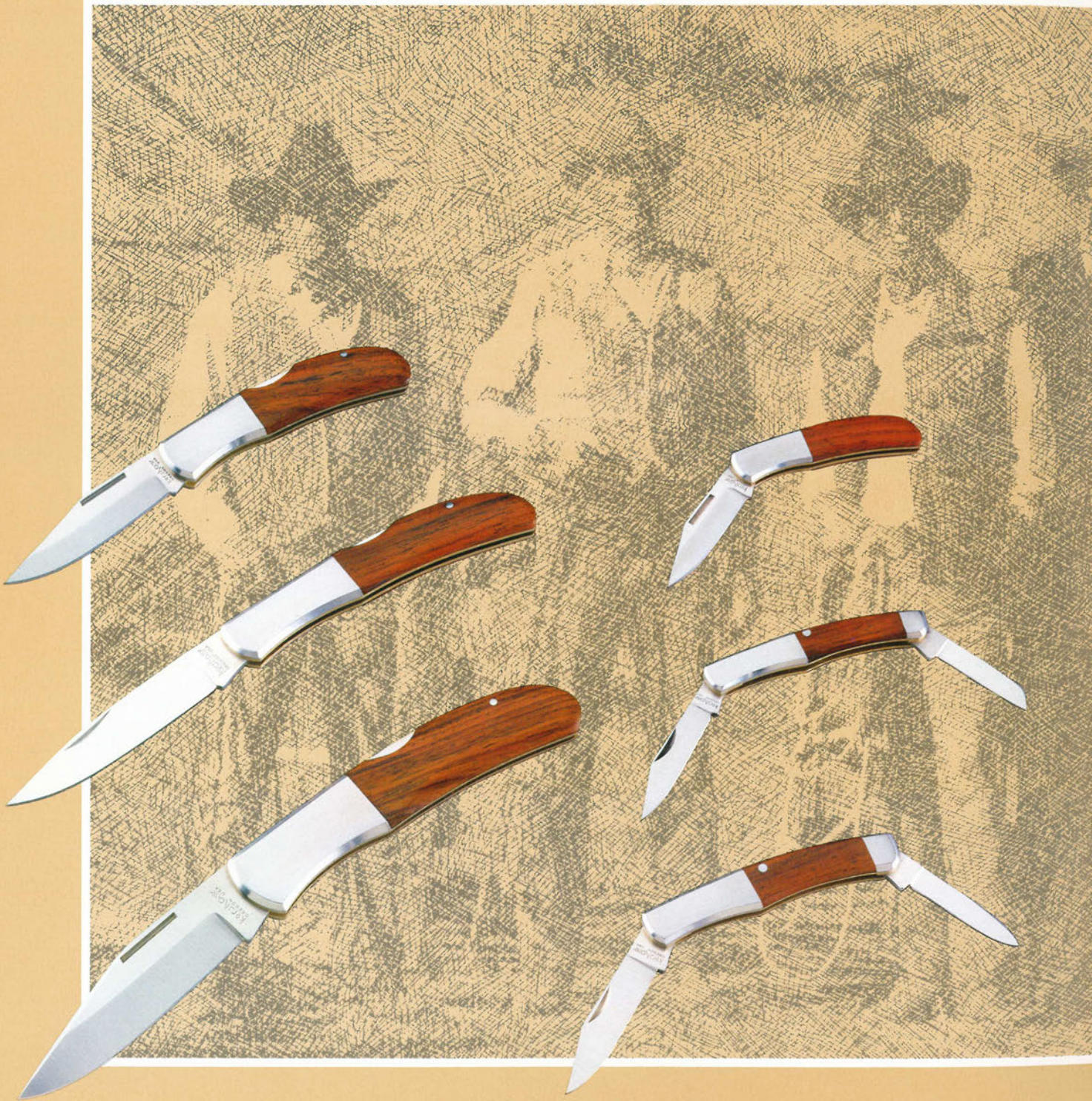
You can be sure that every knife branded "Kershaw" is the best that's made... You've got my name on it.



Peter G. Kershaw  
President,  
Kai Cutlery, USA, Ltd.



# Officer Ranch Collection



**4100  
WHISKEY GAP**

Locking Clip Blade—2 $\frac{1}{4}$ " (5.7cm)  
Closed—3" (7.6cm)  
Gift boxed

**4150  
WILD TURKEY**

Locking Modified Clip Blade—3 $\frac{1}{8}$ " (7.9cm)  
Closed—3 $\frac{3}{4}$ " (9.5cm)

**4200  
BIG JOE**

Locking Clip Blade—3 $\frac{1}{4}$ " (8.3cm)  
Closed—4 $\frac{1}{4}$ " (10.8cm)  
Includes Harness Leather Scabbard

**4000  
LIL' CODY**

Clip Blade—1 $\frac{5}{8}$ " (4.1cm)  
Closed—2 $\frac{1}{4}$ " (5.7cm)

**4300  
JUSTIN**

Clip Blade—1 $\frac{7}{8}$ " (4.8cm)  
Sheepfoot Blade—1 $\frac{3}{8}$ " (3.5cm)  
Closed—2 $\frac{1}{2}$ " (6.4cm)

**4350  
45 RANCH**

Clip Blade—2" (5.1cm)  
Pen Blade—1 $\frac{5}{8}$ " (4.1cm)  
Closed—2 $\frac{7}{8}$ " (7.3cm)



The tough Officer Ranch blades are all made of a strong edge holding AUS 8-A high-carbon stainless steel (Rockwell hardness C57-59) with polished internal parts to prevent rust and corrosion.

The grips feature stainless steel bolsters with sandalwood inlays or the new Task Force™ rubber polymer material that won't conduct heat or cold and forms a cushioned, non-slip grip on each knife.



**4400TF  
WADE OFFICER**

Modified Clip Blade—3<sup>1</sup>/<sub>8</sub>" (7.9cm)  
Sheepfoot Blade—2<sup>3</sup>/<sub>8</sub>" (6.0cm)  
Closed—3<sup>7</sup>/<sub>8</sub>" (9.8cm)

**4350TF  
GENE OFFICER**

Clip Blade—1<sup>7</sup>/<sub>8</sub>" (4.8cm)  
Sheepfoot Blade—1<sup>1</sup>/<sub>4</sub>" (3.2cm)  
Closed—2<sup>7</sup>/<sub>8</sub>" (7.3cm)

**4300TF  
JIM OFFICER**

Clip Blade—1<sup>7</sup>/<sub>8</sub>" (4.8cm)  
Pen Blade—1<sup>1</sup>/<sub>8</sub>" (2.9cm)  
Closed—2<sup>1</sup>/<sub>2</sub>" (6.4cm)

**1045  
BLACK COLT**

Locking Clip Blade—3<sup>1</sup>/<sub>8</sub>" (7.9cm)  
Closed—4" (10.2cm)  
Includes Cordura® Scabbard

**1060  
BLACK HORSE**

Locking Clip Blade—4" (10.2cm)  
Closed—4<sup>7</sup>/<sub>8</sub>" (12.4cm)  
Includes Cordura® Scabbard

**1065  
OUTLAW BILL**

Locking Drop Point Blade—4" (10.2cm)  
Closed—4<sup>7</sup>/<sub>8</sub>" (12.4cm)  
Includes Cordura® Scabbard

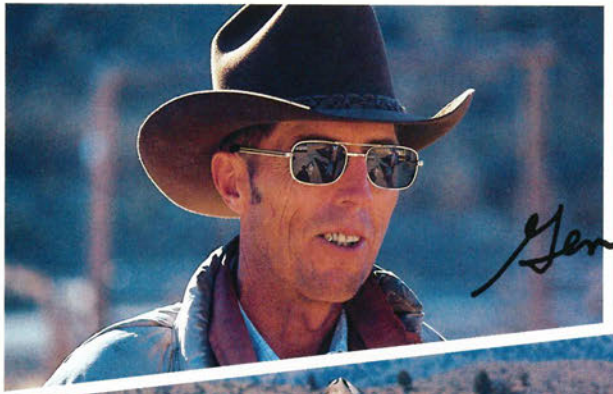


# Officer Ranch

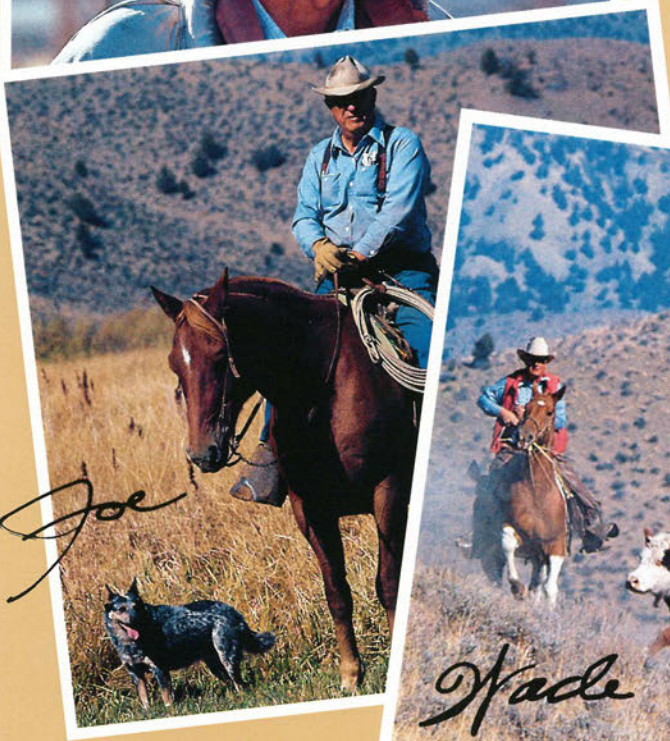
In the late 1800's, the Officer family settled in a valley on the South fork of the John Day River in Oregon's Blue Mountains.

Over the decades, the ranch has been worked by the family, weathering the tasks typical to the life of the Western American rancher.

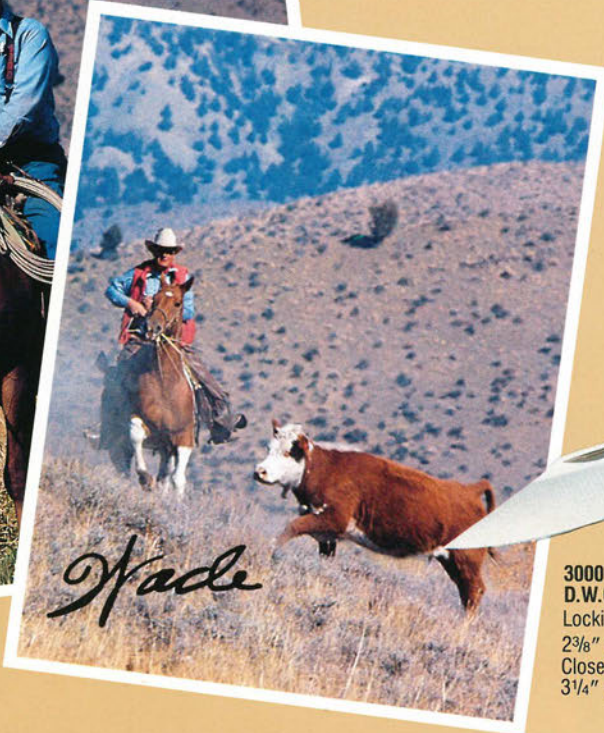
For Kershaw, the Officer Ranch is a source of ideas for new knife designs and a proving ground for every outdoor knife we make. Officer Ranch knives are designed for hard work and proven performance and were built for our toughest customers. They are truly Ranch tough.



*Gene*



*Joe*



*Wade*

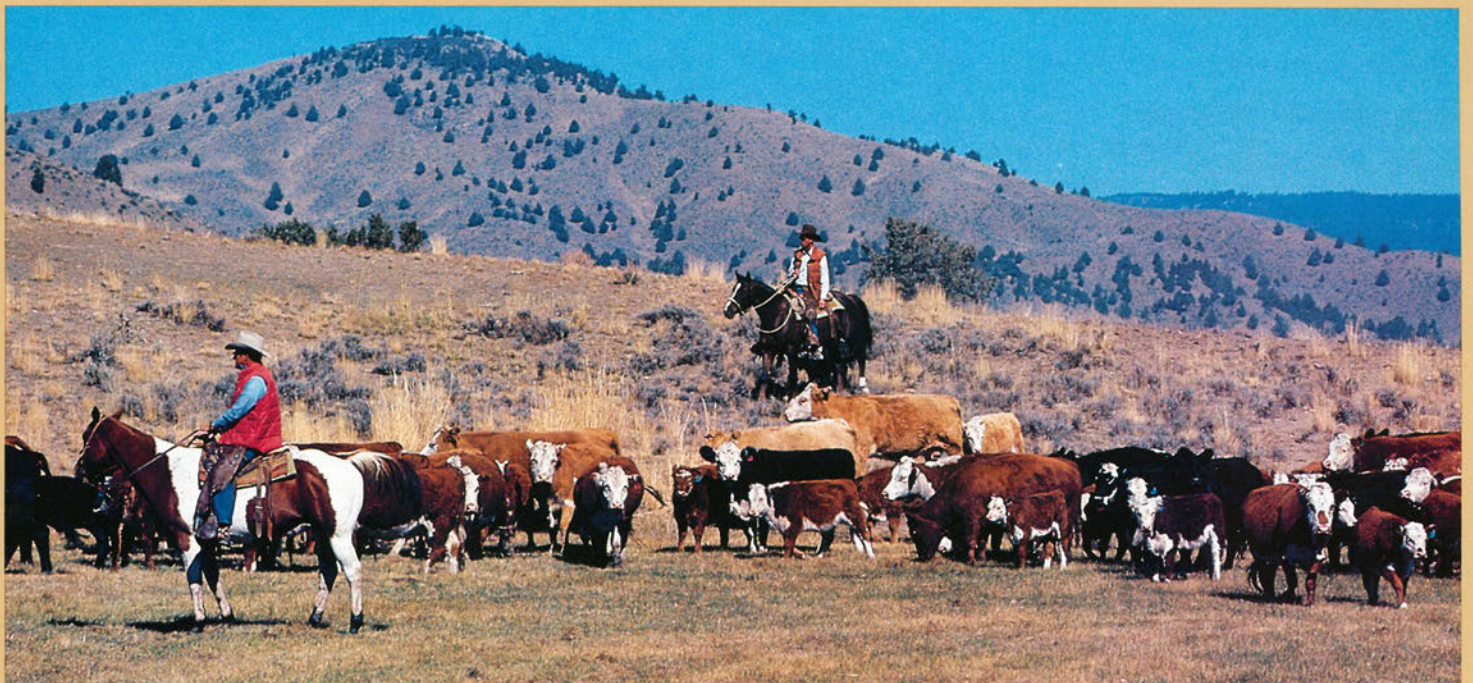


**D.W.O.  
Delley Wade Officer**  
1960-1984

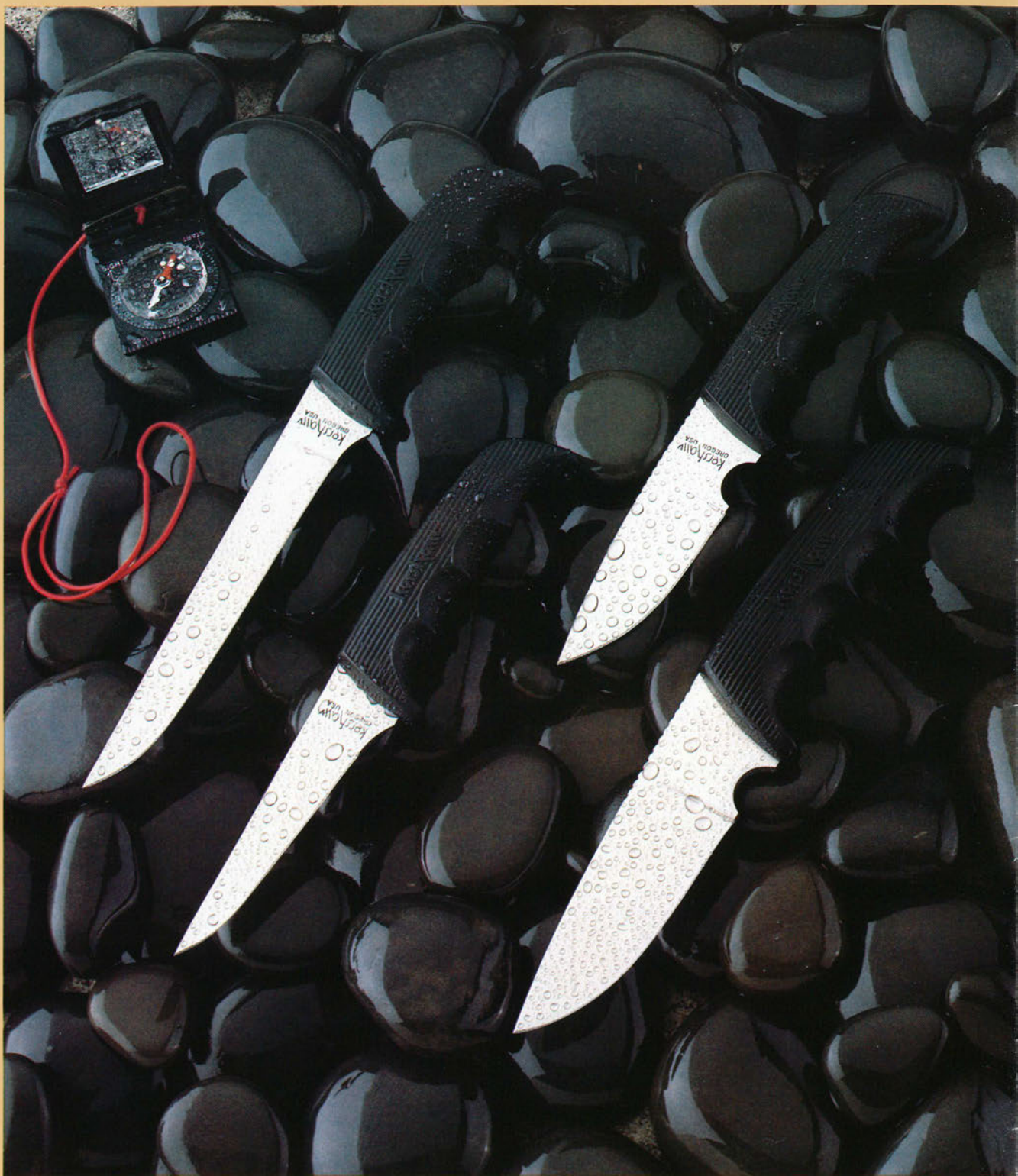
Izee, Oregon Officer Ranch

**3000  
D.W.O.**  
Locking Clip Blade—  
2<sup>3</sup>/<sub>8</sub>" (6.0cm)  
Closed—  
3<sup>1</sup>/<sub>4</sub>" (8.3cm)

Delley Wade Officer was a victim of a hunting accident. This knife is dedicated to him and for the encouragement of hunter safety.







**1031TF** Slicing/Fillet Blade—6¼" (15.9cm)  
Overall—10¼" (26.0cm)  
Includes Cordura®/Hard Shell Sheath

**1029TF** All Purpose Blade—4¼" (10.8cm)  
Overall—8¼" (21.0cm)  
Includes Cordura®/Hard Shell Sheath

**1030TF** Drop Point Blade—4⅞" (10.5cm)  
Overall—8⅞" (20.6cm)  
Includes Cordura®/Hard Shell Sheath

**1034TF** Drop Point Blade—5" (12.7cm)  
Overall—9¾" (24.8cm)  
Includes Cordura®/Hard Shell Sheath



The Kershaw Sheath Hunters reflect an ageless demand for a tool that can be relied upon in any environment. They are the ultimate in useability and durability.

# Sheath Hunters

Constructed of high-carbon AUS 8-A stainless steel, rated Rockwell C57-59, these knives are mirror polished to prevent rust or corrosion. The handles are contoured with finger grooves for comfort and cutting control. Available in a variety of blade lengths and design, the Kershaw Sheath Hunters feature handles of phenolic and brass, or Task Force rubber polymer grips. Each knife is guaranteed shaving sharp and will deliver a lifetime of performance and reliability.



- 1029** All Purpose Blade—4<sup>3</sup>/<sub>8</sub>" (11.1cm)  
Overall—8<sup>1</sup>/<sub>2</sub>" (21.6cm)  
Includes Harness Leather Sheath
- 1030** Drop Point Blade—4" (10.2cm)  
Overall—8<sup>1</sup>/<sub>4</sub>" (21.0cm)  
Includes Harness Leather Sheath
- 1035** Heavy Duty/Big Game Blade—5<sup>1</sup>/<sub>2</sub>" (14.0cm)  
Overall—10<sup>1</sup>/<sub>4</sub>" (26.0cm)  
Includes Harness Leather Sheath



# Folding Hunters

Through the evolution of the hunting knife, the need for a compact and functional blade has been met with the development of folding hunting knives.

The Kershaw Folding Hunters, built tough for rugged use, meet the tasks of hunting or heavy field duties. Each knife is carefully crafted and guaranteed shaving sharp.

The Folding Hunters are available with bone, rosewood or phenolic handles trimmed with brass. The handles are contoured to the hand with finger grooves for comfort and control. Each knife features precision fitting locking blades that don't wobble and they open and close with a smooth positive action.



## 2105 LITTLE STUD

Water Buffalo Bone Handle  
Locking Drop Point Blade—2" (5.1cm)  
Closed—2<sup>5</sup>/<sub>8</sub>" (6.7cm)

## 2110 HONCHO

Water Buffalo Bone Handle  
Locking Drop Point Blade—2<sup>3</sup>/<sub>8</sub>" (6.0cm)  
Closed—3<sup>1</sup>/<sub>4</sub>" (8.3cm)

## 2120 MACHO

Water Buffalo Bone Handle  
Locking Drop Point Blade—2<sup>7</sup>/<sub>8</sub>" (7.3cm)  
Closed—4" (10.2cm)

## 1040W FOLDING FIELD II

Malayan Sandalwood Handle  
Locking Drop Point Blade—3" (7.6cm)  
Closed—3<sup>3</sup>/<sub>4</sub>" (9.5cm)  
Includes Harness Leather Scabbard

## 1040B FOLDING FIELD II

Water Buffalo Bone Handle  
Locking Drop Point Blade—3" (7.6cm)  
Closed—3<sup>3</sup>/<sub>4</sub>" (9.5cm)  
Includes Harness Leather Scabbard

## 1050 FOLDING FIELD

Brass/Phenolic Handle  
Locking Drop Point Blade—3<sup>3</sup>/<sub>4</sub>" (9.5cm)  
Closed—4<sup>3</sup>/<sub>4</sub>" (12.1cm)  
Includes Harness Leather Scabbard



# German Special Editions

One hundred years of skill and craftsmanship are represented in each German Special Edition Knife. These hand forged knives are crafted of high-carbon stainless steel, with strong full-tang construction and Indian Sambar stag horn handles, and are classic examples of German detail and workmanship.

Available in sheath or fold-up styles, the German Special Editions are both beautiful and functional knives.



**4962  
GARMISCH**

Locking Drop Point Blade— $3\frac{3}{8}$ " (8.6cm)  
Closed— $4\frac{1}{4}$ " (10.8cm)  
Includes Custom Leather Scabbard

**4958  
BAVARIA**

Locking Drop Point Blade— $3\frac{3}{8}$ " (8.6cm)  
Closed— $4\frac{1}{4}$ " (10.8cm)  
Includes Custom Leather Scabbard

**4924  
BLACK FOREST**

Locking Clip Blade— $3\frac{3}{4}$ " (9.5cm)  
Closed— $4\frac{1}{4}$ " (10.8cm)  
Includes Custom Leather Scabbard

**4932  
RHINELANDER**

Locking Clip Blade— $4\frac{1}{8}$ " (10.5cm)  
Closed—5" (12.7cm)  
Includes Custom Leather Scabbard

**4478  
GAMEKEEPER**

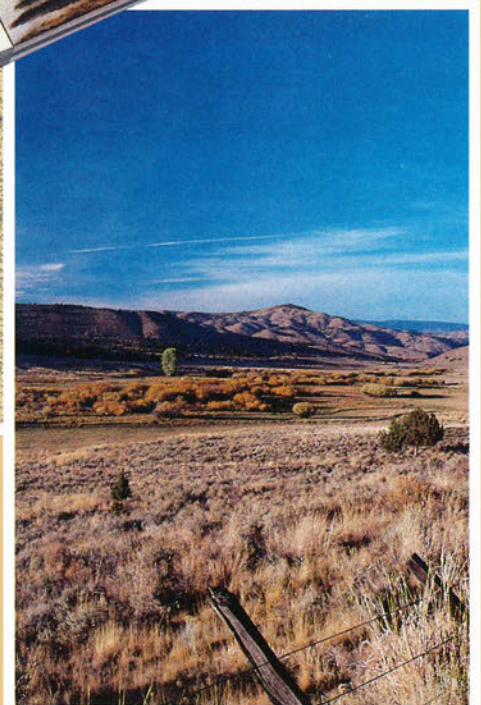
Clip Blade— $3\frac{7}{8}$ " (9.8cm)  
Overall— $7\frac{1}{2}$ " (19.1cm)  
Includes Custom Leather Sheath

**4470  
SURVIVAL**

Double Edge Blade— $4\frac{7}{8}$ " (12.4cm)  
Overall— $9\frac{1}{4}$ " (23.5cm)  
Includes Custom Leather Sheath

**4456  
BOWIE**

Clip Blade—7" (17.8cm)  
Overall— $11\frac{3}{4}$ " (29.8cm)  
Includes Custom Leather Sheath



Officer Ranch



# All-Purpose Folders

Today, pocket knives are as much a statement of lifestyle, as a useful working accessory. The All-Purpose Folding Pocket Knives from Kershaw are designed to tackle tough cutting jobs, while remaining pleasing to the eye.

These folders feature rounded corners for carrying comfort, plus strong shaving sharp Kai Stainless Steel® blades. Most models are lock blades which will not break away under heavy use.

All parts, inside and out, are mirror polished to protect against rust and corrosion. The outside cases are constructed of stainless steel with rosewood inlays.

Tough and beautiful, they measure up to the demands of everyday use.

<b>2002 CHUM</b>	Locking Drop Point Blade—1 <sup>7</sup> / <sub>8</sub> " (4.8cm) Closed—2 <sup>5</sup> / <sub>8</sub> " (6.7cm) Gift Boxed
<b>2000 ROGUE</b>	Locking Clip Blade—2 <sup>1</sup> / <sub>4</sub> " (5.7cm) Closed—3 <sup>1</sup> / <sub>8</sub> " (7.9cm) Gift Boxed
<b>2040 STAG</b>	Locking Drop Point Blade—3 <sup>1</sup> / <sub>4</sub> " (8.3cm) Closed—4 <sup>1</sup> / <sub>8</sub> " (10.5cm)
<b>2050 RANCHER</b>	Locking Drop Point Blade—3 <sup>1</sup> / <sub>8</sub> " (7.9cm) Clip Blade—2 <sup>3</sup> / <sub>4</sub> " (7.0cm) Closed—4 <sup>1</sup> / <sub>8</sub> " (10.5cm)
<b>2010 RUSTLER</b>	Locking Clip Blade—2 <sup>1</sup> / <sub>4</sub> " (5.7cm) Clip Blade—1 <sup>7</sup> / <sub>8</sub> " (4.8cm) Closed—3 <sup>1</sup> / <sub>8</sub> " (7.9cm) Gift Boxed
<b>2001 GOOD BUDDY</b>	Drop Point Blade—1 <sup>3</sup> / <sub>4</sub> " (4.4cm) Nail File/Bottle Opener/ Screwdriver—1 <sup>5</sup> / <sub>8</sub> " (4.1cm) Closed—2 <sup>1</sup> / <sub>2</sub> " (6.4cm) Gift Boxed





# Task Force

The Kershaw Task Force Knives are rugged, all weather knives designed to be dependable. They provide heavy-duty performance in any indoor or outdoor circumstance. The blades and internal parts of these multi-purpose tools are made of high-carbon stainless steel, mirror polished to protect against rust and corrosion. The grips are made of a cast rubber polymer which will not conduct heat or cold and forms a cushioned, non-slip grip on each knife.



## 3020 SARGE

Drop Point Blade—  
2 1/8" (5.4cm)  
Pen Blade—  
1 3/8" (3.5cm)  
Scissors—  
2 1/8" (5.4cm)  
Fruit Peeler—  
1 7/8" (4.8cm)  
File—  
1 7/8" (4.8cm)  
Closed—3" (7.6cm)  
Includes Tweezers  
& Toothpick

## 3010 ROOKIE

Pen Blade—  
1 5/8" (4.1cm)  
Scissors—  
1 5/8" (4.1cm)  
File—1 5/8" (4.1cm)  
Closed—  
2 1/4" (5.7cm)  
Includes Tweezers  
& Toothpick

## 3030 QUARTERMASTER

Drop Point Blade—2 3/4" (7.0cm)  
Saw—2 5/8" (6.7cm)  
Fish Scaler/Hook Disgorger—2 7/8" (7.3cm)

Scissors—2 5/8" (6.7cm)  
Closed—4" (10.2cm)

Includes Can Opener, Corkscrew,  
Screwdriver/Bottle Opener,  
Tweezers & Toothpick

# Specialty

The .12 ga. Shotgun Shell Knives and the .22 cal. "Pistol" knife are unique, yet functional pieces which reflect the Kershaw commitment to quality. These knives are compact working tools for every sportsman.

The .12 ga. features a rosewood or plastic handle, and is available with flatwalled screwdriver/ file or field dressing hook along with a clip blade, in either model.

The .22 cal. "Pistol," is a compact folding knife perfect for small game dressing.

Both knives are ideal gifts for the sportsman.



**.22cal.  
PISTOL KNIFE**  
Locking Blade—  
2 1/4" (5.7cm)  
Closed—  
6 1/4" (15.9cm)  
Includes Custom  
Leather Scabbard

**.12ga.D SHOTGUN  
SHELL KNIFE**  
Clip Blade—  
2" (5.1cm)  
Screwdriver/File—  
2" (5.1cm)  
Closed—  
2 5/8" (6.7cm)  
Gift Boxed

**.12ga.S SHOTGUN  
SHELL KNIFE**  
Clip Blade—  
2" (5.1cm)  
Field Dressing Hook—  
2 3/8" (6.0cm)  
Closed—  
2 3/4" (7.0cm)  
Gift Boxed

**.12ga.P SHOTGUN  
SHELL KNIFE**  
Clip Blade—  
2" (5.1cm)  
Screwdriver/File—  
2" (5.1cm)  
Closed—  
2 5/8" (6.7cm)



# CLEARwater

Clearwater Fillet Knives feature several blade lengths and handle designs, including the Task Force grips on the Folding Angler and two fixed blade knives. Each handle is permanently injection molded onto the tang of the fixed blade knives to prevent the blade from breaking loose from the handle. The blades are ground thin and flexible, honed razor sharp for quick and precise fillet work.

The Clearwater Fishing Tool and the "Skeeter" are new additions to the series. The Fishing Tool is an all-purpose vest accessory. The "Skeeter" Fly Tying Scissor is the professional's choice featuring wide finger loops for control, razor sharp cutting edges and fine points to tackle every task of the fly tyer.



**1239TF**  
**CLEARWATER FILLET KNIFE**  
Fillet Blade—9" (22.9cm)  
Overall—14 1/4" (36.2cm)  
Includes Cordura®/Hard Shell Sheath

**1254**  
**ANGLER II**  
Fillet Blade—6 1/2" (16.5cm)  
Overall—12 3/4" (32.4cm)  
Includes Poly Sheath

**1234**  
**FLOATING FISH KNIFE**  
Fillet Blade—6 1/2" (16.5cm)  
Overall—12 5/8" (32.1cm)  
Includes Poly Sheath

**1235**  
**FLOATING FISH KNIFE**  
Fillet Blade—7 3/4" (19.7cm)  
Overall—13 3/4" (34.9cm)  
Includes Poly Sheath

**1244TF**  
**CLEARWATER FOLDING ANGLER**  
Locking Fillet Blade—5 1/2" (14.0cm)  
Closed—6 3/8" (16.2cm)  
Includes Cordura® Scabbard

**1210**  
**SKEETER™ FLY TYING SCISSORS**  
Blades—1 1/4" (3.2cm)  
Overall—4 1/8" (10.5cm)

**1205**  
**CLEARWATER FISHING TOOL**  
All Purpose Scissors—5" (12.7cm)  
Includes Following Features:  
Leader/Line Cutter  
Split Shot Crimper  
Hook Disgorger—4 1/2" (11.4cm)  
Scabbard—5 1/8" (13.0cm)  
Includes Following Features:  
Swivel Attachment for Belt/Vest  
Hook Hone  
Hook Magnet

**1237TF**  
**CLEARWATER FILLET KNIFE**  
Fillet Blade—6 3/4" (17.1cm)  
Overall—11 3/4" (29.8cm)  
Includes Cordura®/Hard Shell Sheath



# Camp

Cooking along the trail, whether it's a high mountain elk camp, in a boat neatly anchored in a quiet bay or in the kitchen of an R.V. parked near a favorite trout lake, requires the versatility of the Kershaw Camp Series of useful outdoor tools.

**DELUXE BLADE TRADER** is a multi-purpose outdoor/kitchen knife set that includes six blades, and covers every cutting job around camp from slicing a tomato to cutting firewood. All the blades are interchangeable and lock securely onto the rosewood handle. The components all fit into a safe and compact vinyl storage case.

**DO IT ALL™ BLADE TRADER** has three blades that go anywhere in a lightweight Cordura® belt sheath. For backpacking, fishing or hunting you have all the blades you need to get the job done...and done right.

**AMBIDEXTROUS SPORTSMAN'S SHEARS** and the **AMBIDEXTROUS ALL-PURPOSE SHEARS** are constructed of extremely strong wide gauge stainless steel and comfortable ABS cushioned grips. Both shears allow precise cutting with either hand. The Sportsman's Shear features a notched blade for cutting fowl bones, flower stalks and numerous other round shapes that tend to slip out of traditional straight ground shears. The straight edge of the All-Purpose Shear is for general household uses in the kitchen, sewing, hobby crafts and the workbench.

**CHROME STEEL® SHARPENER** is a handy tool that does an excellent job of resharpening a dull blade of any kind—field or kitchen knives. The abrasive material is a combination of ceramic and metal ground together and chemically bonded to an unbreakable steel core that will not chip like ordinary ceramic sharpeners.

## 1099 DELUXE BLADE TRADER

Frozen Food Blade—7¾" (19.7cm)  
Bread Slicing Blade—7¾" (19.7cm)  
Carving Blade—7¾" (19.7cm)  
Cook's Blade—7¾" (19.7cm)  
Saw Blade—7¾" (19.7cm)  
Boning Blade—7¾" (19.7cm)  
Overall—13¾" (34.9cm)  
Includes Zippered Vinyl Storage Case

## 1095 DO IT ALL™ BLADE TRADER

Fillet/Slicing Blade—5½" (14.0cm)  
Crosscut Saw—5½" (14.0cm)  
Clip Point Boning/Hunting Blade—3⅞" (9.8cm)  
Maximum Overall—10½" (26.7cm)  
Includes Cordura® Scabbard

## 2500 CHROME STEEL® SHARPENING TOOL

Sharpening Blade—5⅞" (14.3cm)  
Overall—10⅞" (25.7cm)  
Includes Custom Leather Sheath

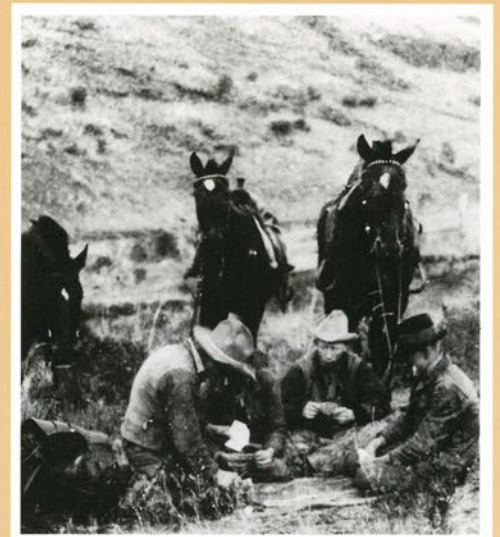


Photo credit: Oregon Historical Society OHS negative 22066



## 1110 AMBIDEXTROUS ALL-PURPOSE SHEARS Overall—8½" (21.6cm)

## 115 AMBIDEXTROUS SPORTSMAN'S SHEARS

Overall—8½" (21.6cm)  
Includes Custom Leather Sheath







**1040 SD SCRIMSHAW ORIGINAL—  
WHITETAIL DEER SCENE—  
SERIAL NUMBERED**

Locking Drop Point Blade—3" (7.6cm)  
Closed—3<sup>3</sup>/<sub>4</sub>" (9.5cm)  
Includes Solid Walnut Storage/  
Presentation Case

**1040SM SCRIMSHAW ORIGINAL—  
MALLARD SCENE—  
SERIAL NUMBERED**

Locking Drop Point Blade—3" (7.6cm)  
Closed—3<sup>3</sup>/<sub>4</sub>" (9.5cm)  
Includes Solid Walnut Storage/  
Presentation Case

**2113SC THIRD EDITION /SCRIMSHAW ORIGINALS—LIMITED EDITION**

Grizzly Bear	Wolf	Eagle
Locking Drop Point Blade—	Locking Drop Point Blade—	Locking Drop Point Blade—
2 <sup>7</sup> / <sub>8</sub> " (7.3cm)	2 <sup>3</sup> / <sub>8</sub> " (6.0cm)	2" (5.1cm)
Closed—4" (10.2cm)	Closed—3 <sup>1</sup> / <sub>4</sub> " (8.3cm)	Closed—2 <sup>5</sup> / <sub>8</sub> " (6.7cm)

**2110SC SCRIMSHAW ORIGINAL—SERIAL NUMBERED**

Grizzly Bear, Wolf, or Eagle Scene  
Locking Drop Point Blade—2<sup>3</sup>/<sub>8</sub>" (6.0cm)  
Closed—3<sup>1</sup>/<sub>4</sub>" (8.3cm)



# Scrimshaw

Walter Alexander

Scrimshaw is one of the original American folk arts which was done by 19th Century whalers as something to pass the time between whale sightings. They used the teeth and lower jaw bone of sperm whales as well as ivory tusks.

Kershaw Scrimshaw knives are individually scrimshawed one by one on natural bone handles. Absolutely no machines are used. The only tools the artist uses are a pencil to draw the design on the bone and a pointed steel spike to etch the design into the bone.



To produce color scrimshaw, each knife must be etched by hand twice, once to etch the bone, and again to detail the color into every fine line.

Each piece is numbered, dated, signed by the artist and placed in a handsome walnut presentation case.

As well as being beautifully designed knives, they are admired as fine works of art.



**4200SW SCRIMSHAW ORIGINAL—  
HUMPBACK WHALE—  
SERIAL NUMBERED**

Locking Clip Blade—3 1/4" (8.3cm)  
Closed: 4 1/4" (10.8cm)  
Includes Solid Walnut Storage/  
Presentation Case

**4200SE SCRIMSHAW ORIGINAL—  
BALD EAGLE—  
SERIAL NUMBERED**

Locking Clip Blade—3 1/4" (8.3cm)  
Closed: 4 1/4" (10.8cm)  
Includes Solid Walnut Storage/  
Presentation Case







#### 5200CE

Locking Drop Point Blade—2<sup>3</sup>/<sub>8</sub>" (6.0cm)

Closed—3" (7.6cm)

Gift Boxed

Hunting Dog, Upland Game Bird, and Wildlife Scenes Available

#### 4200CE

Locking Clip Blade—3<sup>1</sup>/<sub>4</sub>" (8.3cm)

Closed—4<sup>1</sup>/<sub>4</sub>" (10.8cm)

Includes Harness Leather Scabbard

Waterfowl, Game Fish, and Big Game Animals Available



# Color Photo-Etched

Color Photo-Etching is a process that permanently etches a hand painted scene on the handle of a polished stainless steel lock blade knife or the brass colored bolster of a sandalwood handled lock blade folder. Each scene is shown with exquisite detail and authenticity and is guaranteed not to wear off.

Using the Model 4200 folding lock blade knife, there are four waterfowl, four big game and four game fish scenes.

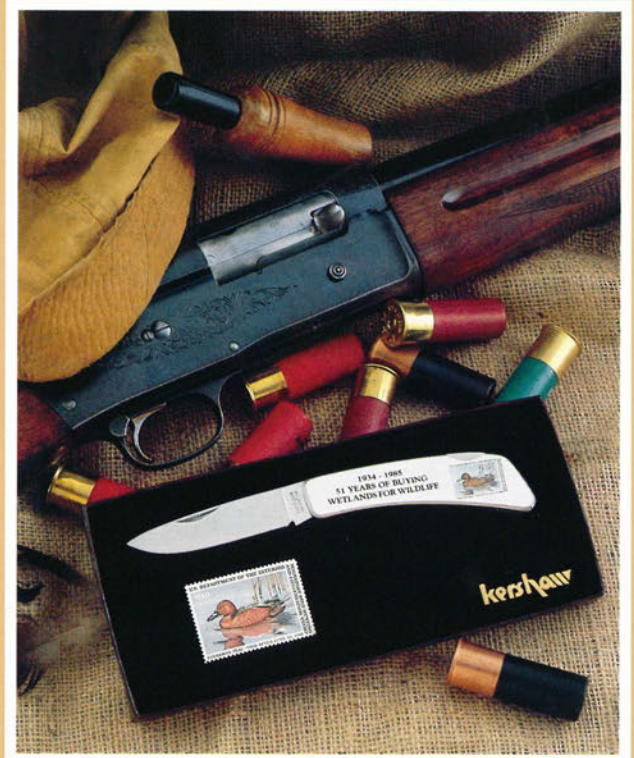
The Model 5200 folding lock blade knife is used for scenes of hunting dogs, game birds, waterfowl, big game and game fish.

The Model 5200 is also used for the Stateside Series featuring state animals and the Duck/Wildlife Conservation Stamp knives.

Full details for the Color Photo-Etched Series is presented in the supplemental photo-etched catalog. **Refer to Supplemental Catalog when ordering.**



**5200SS**  
Locking Drop Point Blade—2<sup>3</sup>/<sub>8</sub>" (6.0cm)  
Closed—3" (7.6cm)  
Gift Boxed  
All Fifty States and America Available



**5185DS 1985 FEDERAL DUCK STAMP KNIFE**  
Locking Drop Point Blade—2<sup>3</sup>/<sub>8</sub>" (6.0cm)  
Closed—3" (7.6cm)  
Gift Boxed  
Other Duck/Wildlife Conservation Stamp Knives Available



# Classic Carving Sets

In Solingen, Germany, a rare art form still exists as it has for centuries. Hand forged cutlery, made in the old world tradition of quality and craftsmanship taught by German masters many years ago.

The casual elegance of the mirror polished, hand forged stainless steel and Indian Sambar stag horn handles together present the statement of excellence guaranteed in all Kershaw Knives. Each piece is a classic example of unsurpassed workmanship and style.

All the sets are packaged in a walnut presentation and storage case.

## 7503 CARVING SET—THREE PIECE

### CARVING KNIFE

Blade—8 $\frac{1}{8}$ " (20.6cm)  
Overall—13 $\frac{1}{8}$ " (33.3cm)

### SERVING FORK

Tines—5" (12.7cm)  
Overall—11 $\frac{3}{4}$ " (29.8cm)

### SHARPENING STEEL

Blade—8" (20.3cm)  
Overall—13 $\frac{1}{8}$ " (33.3cm)

## 7504 CARVING SET—FOUR PIECE

### CARVING KNIFE

Blade—8 $\frac{1}{8}$ " (20.6cm)  
Overall—13 $\frac{1}{8}$ " (33.3cm)

### SERVING FORK

Tines—5" (12.7cm)  
Overall—11 $\frac{3}{4}$ " (29.8cm)

### SHARPENING STEEL

Blade—8" (20.3cm)  
Overall—13 $\frac{1}{8}$ " (33.3cm)

### POULTRY SHEARS

Blades—3 $\frac{3}{4}$ " (9.5cm)  
Overall—10 $\frac{3}{8}$ " (26.4cm)



## 7502 CARVING SET—TWO PIECE

### CARVING KNIFE

Blade—8 $\frac{1}{8}$ " (20.6cm)  
Overall—13 $\frac{1}{8}$ " (33.3cm)

### SERVING FORK

Tines—5" (12.7cm)  
Overall—11 $\frac{3}{4}$ " (29.8cm)





# Classic Gifts

To complement the elegant carving sets is a six piece German handcrafted steak knife set made of the same stainless steel and Indian Sambar stag horn handles. These Solingen German knives are packaged in a solid walnut presentation case with a cushioned velour lining.

The four piece Sportman's Steak Knife set features the beauty, style and comfort of Kershaw outdoor knives and will add elegance to any situation. Graceful mallards are etched in detail on the blades, and rosewood inlays grace the brushed stainless steel handles. This four piece set is packaged in a walnut presentation case perfect for storage or display.

**7320**  
**HAND FORGED**  
**STEAK KNIFE SET** Forged Steak Knife/Natural Sambar Stag Horn Handle  
Blade—4 $\frac{5}{8}$ " (11.7cm) Overall—9" (22.9cm)  
Includes Solid Walnut Storage/Presentation Case

Catfish 'n Mallard and the Lil' Skinner II are custom styled Kershaw hunting knives. Each features stainless steel blades permanently etched with an exquisite wildlife scene and handsome rosewood inlay handles. Custom sheaths are included for both knives.

The Gift Pack is a great combination for the hunter. It includes the Folding Field Knife, Chromestee® sharpening tool and sheaths for both.

**2214SS**  
**SPORTSMAN'S**  
**STEAK KNIFE**  
**SET—FOUR PIECE** Steak Knife/Rosewood Inlay  
Blade—3 $\frac{1}{8}$ " (7.9cm)  
Overall—7" (17.8cm)  
Includes Solid Walnut Storage/Presentation case



**2210**  
**CATFISH 'N**  
**MALLARD** Small Game/Fowl Blade—3 $\frac{1}{8}$ "  
(7.9cm)  
Overall—7" (17.8cm)  
Includes Custom Leather Sheath

**2230**  
**LIL' SKINNER** Skinning/Caping Blade—2 $\frac{1}{2}$ "  
(6.4cm)  
Overall—6" (15.2cm)  
Includes Custom Leather Sheath

**1050GP**  
**FOLDING FIELD KNIFE GIFT PACKAGE**  
**FOLDING FIELD KNIFE**  
Locking Drop Point Blade—3 $\frac{3}{4}$ " (9.5cm)  
Closed—4 $\frac{3}{4}$ " (12.1cm)  
Includes Harness Leather Scabbard  
**CHROME STEEL® SHARPENING TOOL**  
Sharpening Blade—5 $\frac{5}{8}$ " (14.3cm)  
Overall—10 $\frac{1}{8}$ " (25.7cm)  
Includes Custom Leather Sheath





# Pocket Jewelry

From the driver's seat of a Rolls to the bench on a buggy, or from the symphony to the golf course, Kershaw Pocket Jewelry creates a mark of distinction with elegantly styled money clips, key chains, and dress pocket knives.

Not for men only... the ladies find that a stylish little pocket knife with scissors ranks high on the list of purse necessities.

## PAR 72 GOLFER'S TOOL/MONEY CLIP KNIFE

Pen Blade—1½" (3.8cm)  
File/Scraper—1½" (3.8cm)  
Overall—2¾" (6.0cm)  
Includes Removable Ball Marker  
and Ball Mark Repair Tool  
Gift Boxed



## 6400 MONEY CLIP KNIFE/ ROSEWOOD INLAY

Pen Blade—1⅝" (4.1cm)  
Scissors—1⅝" (4.1cm)  
Nail File—1⅝" (4.1cm)  
Closed—2" (5.1cm)  
Gift Boxed



## 6500 KEY CHAIN KNIFE/ ROSEWOOD INLAY

Pen Blade—1⅝" (4.1cm)  
Scissors—1⅝" (4.1cm)  
Nail File—1⅝" (4.1cm)  
Closed—2⅛" (5.4cm)  
Gift Boxed



## 6700 MONEY CLIP KNIFE/ SANDALWOOD INLAY

Pen Blade—1¾" (4.4cm)  
Scissors—1¾" (4.4cm)  
Closed—2¼" (5.7cm)  
Gift Boxed



## 2005 MONEY CLIP KNIFE/ ROSEWOOD INLAY

Pen Blade—1½" (3.8cm)  
Scissors—1½" (3.8cm)  
Closed—2¼" (5.7cm)  
Gift Boxed

## 2006 MONEY CLIP KNIFE/ ROSEWOOD INLAY

Pen Blade—1½" (3.8cm)  
Nail File/Screwdriver/Bottle Opener—  
1½" (3.8cm)  
Closed—2¼" (5.7cm)  
Gift Boxed







P.M. Kershaw Medford, Oregon 1902



**2003**  
**THE PIPE KNIFE**

Reaming Blade—2 1/4" (5.7cm)  
Pipe Pick—2 1/2" (6.4cm)  
Closed—3 1/8" (7.9cm)  
Includes Built-In Tamper

**5300ME**  
**POCKET KNIFE/MOTHER OF PEARL INLAY**

Locking Drop Point Blade—1 3/4" (4.4cm)  
Closed—2 3/8" (6.0cm)  
Gift Boxed

**5300L**  
**POCKET KNIFE/TORTOISE SHELL LACQUER INLAY**

Locking Drop Point Blade—1 3/4" (4.4cm)  
Closed—2 3/8" (6.0cm)  
Gift Boxed

**5300S**  
**POCKET KNIFE/SATIN STAINLESS**

Locking Drop Point Blade—1 3/4" (4.4cm)  
Closed—2 3/8" (6.0cm)  
Gift Boxed



**2006EI**  
**MONEY CLIP KNIFE/COLOR PHOTO-ETCHED INLAY**

Pen Blade—1 1/2" (3.8cm)  
Nail File/Screwdriver/Bottle Opener—1 1/2" (3.8cm)  
Closed—2 1/4" (5.7cm) Gift Boxed

**6500EI**  
**KEY CHAIN KNIFE/COLOR PHOTO-ETCHED INLAY**

Pen Blade—1 5/8" (4.1cm)  
Scissors—1 5/8" (4.1cm)  
Nail File—1 5/8" (4.1cm)  
Closed—2" (5.1cm) Gift Boxed



**2005EI**  
**MONEY CLIP KNIFE/COLOR PHOTO-ETCHED INLAY**

Pen Blade—1 1/2" (3.8cm)  
Scissors—1 1/2" (3.8cm)  
Closed—2 1/4" (5.7cm) Gift Boxed

**6400EI**  
**MONEY CLIP KNIFE/COLOR PHOTO-ETCHED INLAY**

Pen Blade—1 5/8" (4.1cm)  
Scissors—1 5/8" (4.1cm)  
Nail File—1 5/8" (4.1cm)  
Closed—2" (5.1cm) Gift Boxed

Inlays Available: Deer, Trout, Canada Goose, Mallard



**1005 SURVIVAL KNIFE** The survival blade has a sandblasted, non-reflective surface and strong tang for solid lock up between handle and blade. Double crosscut saw teeth on the back will saw through tough jobs like wood, bone or metal. When not in use the teeth are covered by a strong plastic strip which offers protection for the sheath.

"O" rings on the threaded buttcap seal the watertight storage tube of the handle. The butt can be used as a hammer without damaging the knife. The stainless steel cap is mylar lined and becomes a mirror for sending signals.

The handle is a steel pipe covered with our Task Force rubber grip, with finger grooves and lanyard hole for positive control. The Task Force handle will not conduct heat or cold and is a non-slip surface.



#### 1005 SURVIVAL KNIFE

Blade/Double Crosscut Saw—6¾" (17.1cm)  
Overall—12½" (32.1cm)  
Includes Cordura®/Steel/Hard Shell Sheath

#### Hollow Handle Contents

- Fishing Hooks/Leaders
- Monofilament Line
- Fluorescent Fly Tying Yarn
- Split Shot
- Firestarter Wicks
- Waterproof/Windproof Matches

#### Sheath contents

- Full-Size Compass
- Waterproof Survival Cards
- Reflective Back-Tracker Strips
- Medical Supplies—Adhesive Bandages, Antibiotic Ointment, Suture & Needle, Tourniquet (surgical tubing), Safety Pins, Razor Blade, Water Purification Tablets
- Sharpening Stone



**1060SS BLACK HORSE SURVIVAL KIT** The 1060 Survival System blends all the elements of the larger, fixed blade system with the compactness of the Black Horse folder. Complete with the same components, the 1060 System includes the Black Horse, a folding, lock back hunter with Task Force handle and Cordura® belt pouch. Both systems offer anyone an extra measure of safety wherever and however their activities take them.

# Survival

Any adventurer, hunter, fisherman, camper, pilot or all-around outdoorsman would do well to have Kershaw Survival knives. These heavy-duty systems combine many of the survival features you need with functional, durable knives that perform well in the most severe conditions.



**1060SS  
BLACK HORSE SURVIVAL KIT**  
Locking Clip Blade—4" (10.2cm)  
Closed—4 7/8" (12.4cm)  
Includes Cordura® Survival Scabbard

**Sheath Contents**

- Full-Sized Compass
- Waterproof Survival Cards
- Reflective Back-Tracker Strips
- Sharpening Stone

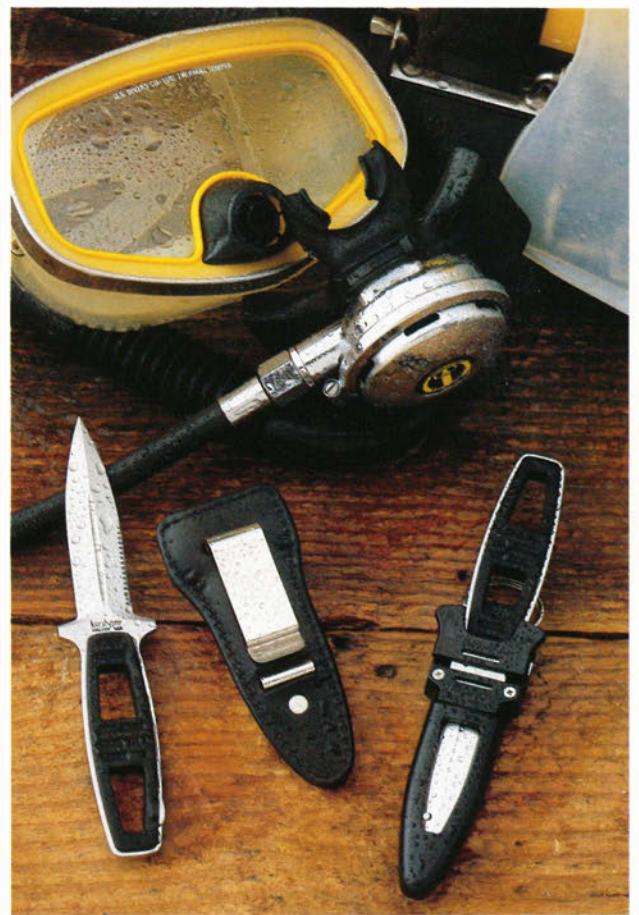
- Medical Supplies—Adhesive Bandages, Antibiotic Ointment, Suture & Needle, Safety Pins, Razor Blade, Water Purification Tablets
- Fishing Hooks/Leaders
- Monofilament Line
- Fluorescent Fly Tying Yarn
- Split Shot
- Waterproof/Windproof Matches
- Firestarter Wicks

## 1006L AMPHIBIAN

Double Edge Blade—4" (10.2cm)  
Overall—7 3/4" (19.7cm)  
Includes Custom Leather Sheath

## 1006P AMPHIBIAN

Double Edge Blade—4" (10.2cm)  
Overall—7 3/4" (19.7cm)  
Includes ABS Diver's Sheath



**1006 AMPHIBIAN** Whether on land or in the sea, the Amphibian provides the durability necessary to handle tough cutting jobs. The strong, one piece full tang high carbon stainless steel blade has serrations on one edge for cutting heavy rope.

This knife is ideal for divers, boaters or any waterborne situation. The rubber grip and a flared guard at the bolster give the user complete control and confidence.

Two sheaths are available. One is a leather sheath with belt or boot clip. The other is an ABS plastic diver's sheath complete with adjustable leg straps.



# Survival

The Special Agent, Trooper and the German Military Boot Knife complete the Kershaw line of Survival Knives. These knives incorporate advanced metallurgy techniques and meticulous handcraftsmanship which creates functional, durable survival knives that are collector's masterpieces.

## 1002-SPECIAL AGENT

The Special Agent is a compact version of the Trooper. Also shipped with custom leather sheath with boot clip, the special agent features an aluminum alloy handle, die cast directly to the tang. The grip is coated with a thermo vinyl and baked onto the handle.

Double Edge Blade—4 $\frac{1}{4}$ " (10.8cm)  
Overall—8 $\frac{3}{8}$ " (21.3cm)  
Includes Custom Leather Sheath

## 1007-TROOPER—SERIAL NUMBERED

The Trooper is an individually handcrafted work of art and is marked with its own serial number. Made of AUS-8A double edged steel, ground shaving sharp, the Trooper blade is inseparable from its fine grain ebony handle. It is shipped with custom formed leather sheath with boot clip and packaged in a hard-side presentation case, registration card and metal plate for engraving.

Double Edge Blade—5 $\frac{1}{4}$ " (13.3cm)  
Overall—9 $\frac{5}{8}$ " (24.4cm)  
Includes Custom Leather Sheath and Presentation Case

## 4351-MILITARY BOOT KNIFE

A new concept of design is presented in the German Boot Knife. Hand forged in Solingen, Germany, this knife features a sandblasted, non-reflective steel with a false edge on top and a matte finish micarta handle. Each knife is shipped with a lightly oiled harness leather sheath with boot clip.

Non-Reflective Blade—4 $\frac{3}{4}$ " (12.1cm)  
Overall—9 $\frac{1}{8}$ " (23.2cm)  
Includes Custom Leather Sheath





# Kershaw Knives

KAI CUTLERY USA, Ltd.  
25300 SW Parkway Avenue  
Wilsonville, OR 97070 USA  
Tel: (503) 682-1966  
(800) 325-2891

Telex: 360-805 KAICUT WSVL  
Facsimile: (503) 682-7168

Distributed in Europe by:  
KAI Cutlery (Europe) GmbH  
Brühler Str. 60, D-5650 Solingen 1,  
West Germany  
Tel: (0212) 81 50 47  
Telex: 85 14 962 KAID  
Facsimile: (0212) 81 69 09



## Guaranteed Shaving Sharp!

All Kershaw knives are guaranteed to be shaving sharp when received from the factory. If a Kershaw knife ever proves defective under normal use (naturally, this does not cover intentional misuse or neglect), simply return it directly to Kershaw, and we will repair or replace it without charge.

## Pride Proven in Performance

All Kershaw blades are manufactured of Kai Stainless Steel® from the AUS series (6A for pocket knives, 8A for survival and hunting knives). This steel is an improvement over famous 440-C, and has a hardness range of Rockwell C57-59. These high-carbon stainless steel blades are heat-treated by an advanced sub-zero quench to take an incredibly sharp edge that holds longer than conventional blades, and is also much easier to maintain.

The best way to discover the true value of Kershaw knives is to compare them with other products on the market today. Compare the design. The craftsmanship. And the performance.